



Datos de la Estación

ESTACIÓN:	7337
NOMBRE:	LACANTUN (CFE)
ESTADO:	CHIAPAS
MUNICIPIO:	OCOSINGO
LATITUD (°):	16.5808
LONGITUD (°):	-90.7022
ALTURA (msn):	120
SITUACIÓN:	SUSPENDIDA
DATOS DESDE:	1 de junio de 1980
HASTA:	31 de diciembre de 2017

Inventario de Registros por Década Año

Estacion		N°de Casos					
Decada	Año	Lluvia	Temp min	Temp max	Temp amb	Evaporación	
1970	1980	209	205	205	205	206	
	Total 1970	209	205	205	205	206	
	1980	1981	365	365	365	365	364
		1982	365	365	365	365	365
		1983	365	365	365	365	362
		1984	366	366	361	366	366
		1985	334	334	329	334	334
		1986	214	214	211	214	214
		1987	365	365	360	365	274
		1988	305	305	301	305	305
		1989	304	304	300	304	304
1990		365	365	365	365	365	
Total 1980	3,348	3,348	3,322	3,348	3,253		
1990	1991	365	365	365	365	365	
	1992	335	335	331	315	335	
	1993	365	365	365	365	365	
	1994	365	365	365	365	365	
	1995	365	365	365	365	365	
	1996	366	366	366	366	366	
	1997	365	365	365	365	365	
	1998	273	273	273	273	273	
	1999	306	306	306	306	306	
	2000	91	92	92	92	92	
	Total 1990	3,196	3,197	3,193	3,177	3,197	
2000	2001	332	334	334	334	334	
	2002	364	365	365	365	365	
	2003	353	354	354	354	349	
	2004	364	366	366	366	366	
	2005	365	365	365	365	365	
	2006	365	365	365	365	365	
	2007	365	365	365	365	365	
	2008	362	362	362	362	358	
	2009	363	363	363	363	361	
	2010	365	365	365	365	365	
	Total 2000	3,598	3,604	3,604	3,604	3,593	
2010	2011	365	365	365	365	365	
	2012	366	364	364	305	305	
	2013	360	353	353			
	2014	354	360	361			
	2015	315	323	323			
	2016	334	331	330			
	2017	362				251	
Total 2010	2,456	2,096	2,096	670	921		
Total general	12,807	12,450	12,420	11,004	11,170		

Estacion	7337
NOMBRE	LACANTUN (CFE)
ESTADO	CHIAPAS

		Lluvia (mm)				
Década	Año	Mín.	Prom.	Máx.	Desv. Est.	
	1970	1980	0.0	14.8	153.4	22.9
Total 1970			0.0	14.8	153.4	22.9
	1980	1981	0.0	9.9	194.4	20.6
		1982	0.0	8.5	185.9	18.5
		1983	0.0	8.1	167.5	17.7
		1984	0.0	10.5	144.0	20.9
		1985	0.0	6.8	93.6	13.7
		1986	0.0	10.2	103.0	16.6
		1987	0.0	7.7	96.2	16.1
		1988	0.0	6.4	139.0	15.4
		1989	0.0	8.9	126.0	18.0
		1990	0.0	8.4	121.3	16.3
Total 1980			0.0	8.5	194.4	17.6
	1990	1991	0.0	6.7	138.5	14.3
		1992	0.0	7.9	127.0	16.1
		1993	0.0	8.2	115.5	16.5
		1994	0.0	5.3	76.0	11.2
		1995	0.0	7.3	98.2	15.6
		1996	0.0	7.0	70.5	12.7
		1997	0.0	7.5	80.3	14.3
		1998	0.0	6.3	152.9	15.4
		1999	0.0	10.1	100.7	18.4
		2000	0.0	8.6	94.6	17.8
Total 1990			0.0	7.4	152.9	15.1
	2000	2001	0.0	7.5	76.2	14.4
		2002	0.0	7.4	120.4	15.8
		2003	0.0	8.3	179.8	19.5
		2004	0.0	6.4	112.0	14.0
		2005	0.0	8.1	141.6	16.7
		2006	0.0	9.1	155.2	19.7
		2007	0.0	4.8	68.1	11.2
		2008	0.0	8.9	204.0	18.9
		2009	0.0	5.5	79.2	11.6
		2010	0.0	8.4	167.3	19.1
Total 2000			0.0	7.4	204.0	16.4
	2010	2011	0.0	7.6	96.8	14.8
		2012	0.0	6.9	96.0	13.6
		2013	0.0	10.5	220.5	21.4
		2014	0.0	7.2	122.7	15.7
		2015	0.0	7.8	144.5	18.8
		2016	0.0	5.9	104.3	12.6
		2017	0.0	5.7	113.6	15.2
Total 2010			0.0	7.4	220.5	16.3
Total general			0.0	7.8	220.5	16.6

Estacion	7337
NOMBRE	LACANTUN (CFE)
ESTADO	CHIAPAS

		Evap (mm)				
Década	Año	Mín.	Prom.	Máx.	Desv. Est.	
	1970	1980	0.1	2.5	8.2	1.3
Total 1970			0.1	2.5	8.2	1.3
	1980	1981	0.1	2.9	6.6	1.3
		1982	0.1	2.8	5.4	1.2
		1983	0.1	3.1	7.9	1.4
		1984	0.2	2.9	6.5	1.2
		1985	0.1	3.1	5.8	1.2
		1986	0.3	2.6	7.5	1.2
		1987	0.0	2.6	6.7	1.3
		1988	0.0	2.8	6.0	1.4
		1989	0.0	2.5	6.1	1.2
		1990	0.0	2.4	4.9	1.1
Total 1980			0.0	2.8	7.9	1.3
	1990	1991	0.0	2.6	8.7	1.4
		1992	0.0	2.7	14.3	1.9
		1993	0.0	2.6	7.8	1.4
		1994	0.0	2.8	7.9	1.4
		1995	0.2	2.9	6.0	1.3
		1996	0.1	2.3	5.4	1.1
		1997	0.0	2.3	4.8	1.1
		1998	0.1	3.3	6.5	1.4
		1999	0.2	3.1	6.9	1.6
		2000	0.2	1.3	5.9	0.8
Total 1990			0.0	2.7	14.3	1.4
	2000	2001	0.1	2.6	5.4	1.2
		2002	0.2	2.5	5.6	1.3
		2003	0.2	2.9	9.6	1.5
		2004	0.2	2.3	5.5	1.1
		2005	0.1	2.5	7.1	1.3
		2006	0.2	2.3	5.4	1.2
		2007	0.1	2.6	6.6	1.3
		2008	0.1	2.4	5.5	1.3
		2009	0.1	2.7	7.6	1.3
		2010	0.1	2.4	5.9	1.3
Total 2000			0.1	2.5	9.6	1.3
	2010	2011	0.1	2.5	7.4	1.3
		2012	0.2	2.9	6.0	1.2
		2013				
		2014				
		2015				
		2016				
		2017	0.8	2.7	5.3	1.1
Total 2010			0.1	2.7	7.4	1.2
Total general			0.0	2.7	14.3	1.3

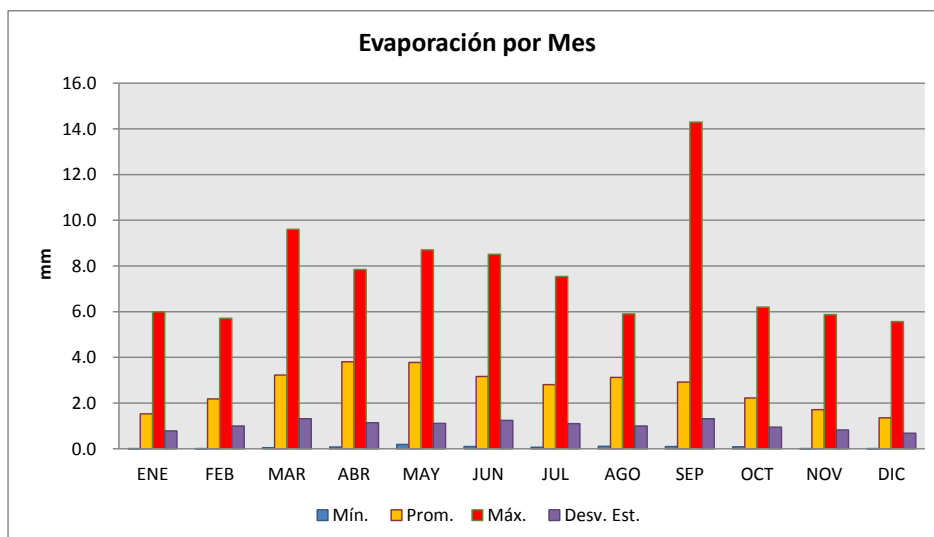
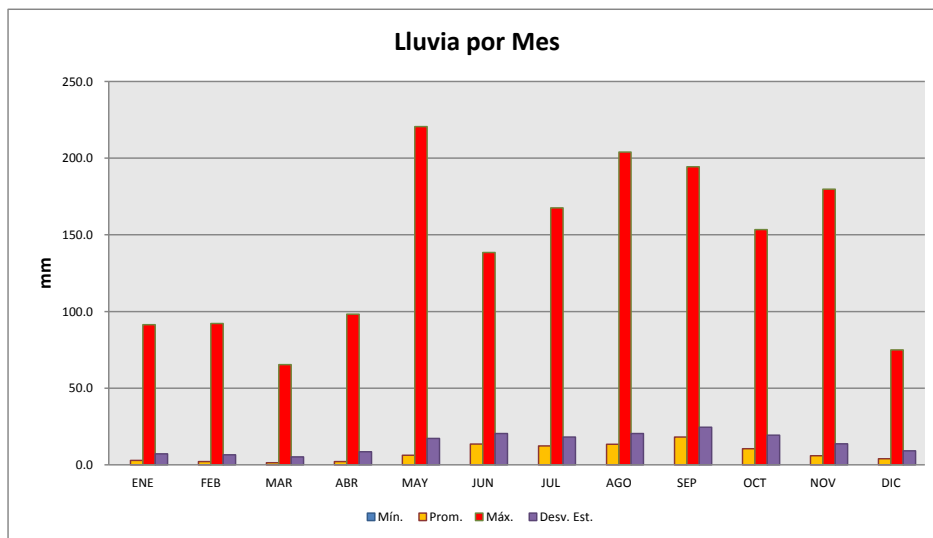


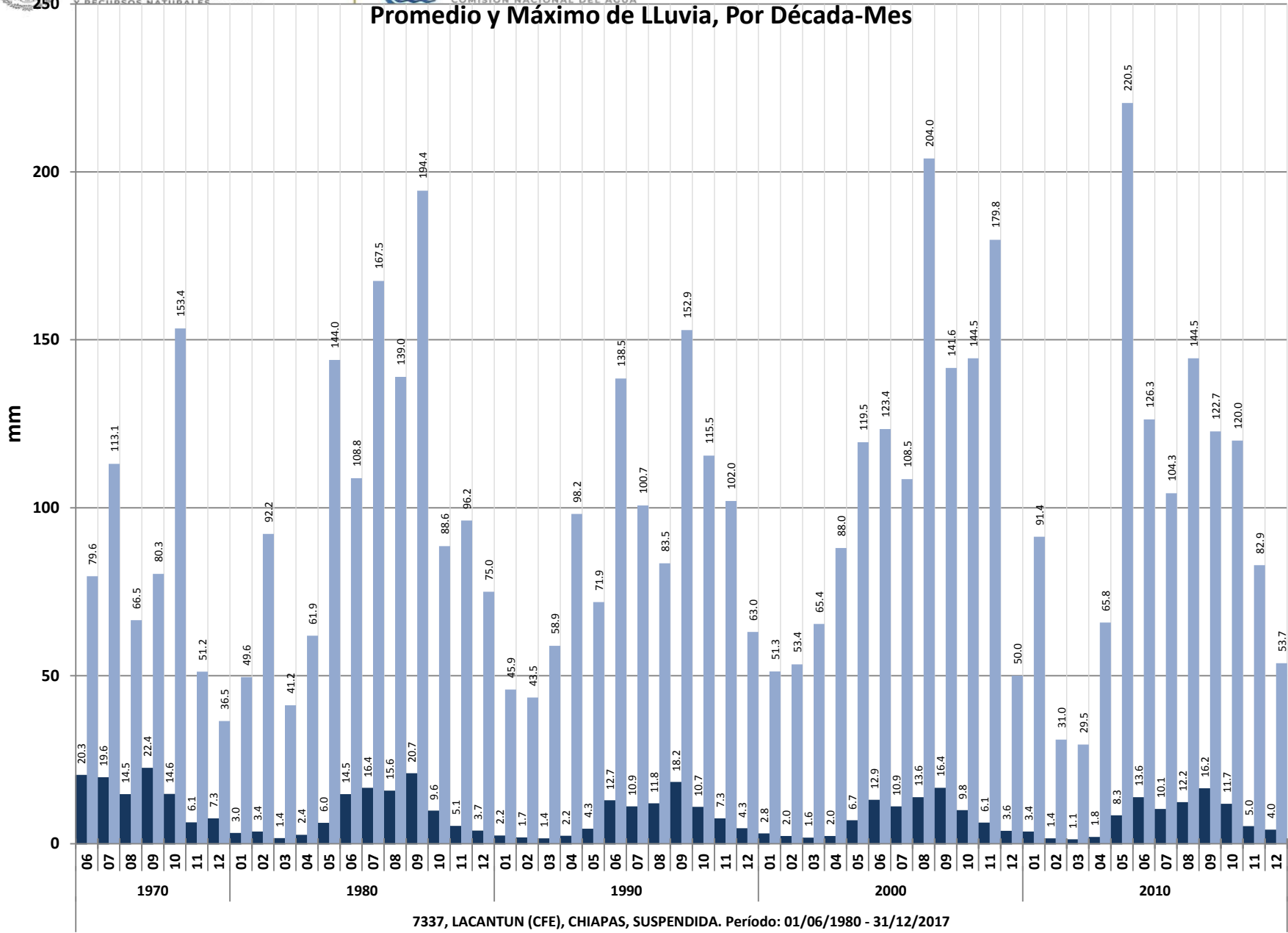
Estación	7337
NOMBRE	LACANTUN (CFE)
ESTADO	CHIAPAS

Estación	7337
NOMBRE	LACANTUN (CFE)
ESTADO	CHIAPAS

Lluvia (mm)					
Mes	Mín.	Prom.	Máx.	Desv. Est.	
ENE	0.0	2.8	91.4	7.2	
FEB	0.0	2.2	92.2	6.5	
MAR	0.0	1.4	65.4	5.2	
ABR	0.0	2.1	98.2	8.5	
MAY	0.0	6.2	220.5	17.2	
JUN	0.0	13.5	138.5	20.4	
JUL	0.0	12.3	167.5	18.2	
AGO	0.0	13.5	204.0	20.4	
SEP	0.0	18.2	194.4	24.5	
OCT	0.0	10.4	153.4	19.3	
NOV	0.0	5.9	179.8	13.7	
DIC	0.0	4.0	75.0	9.1	
Total general	0.0	7.8	220.5	16.6	

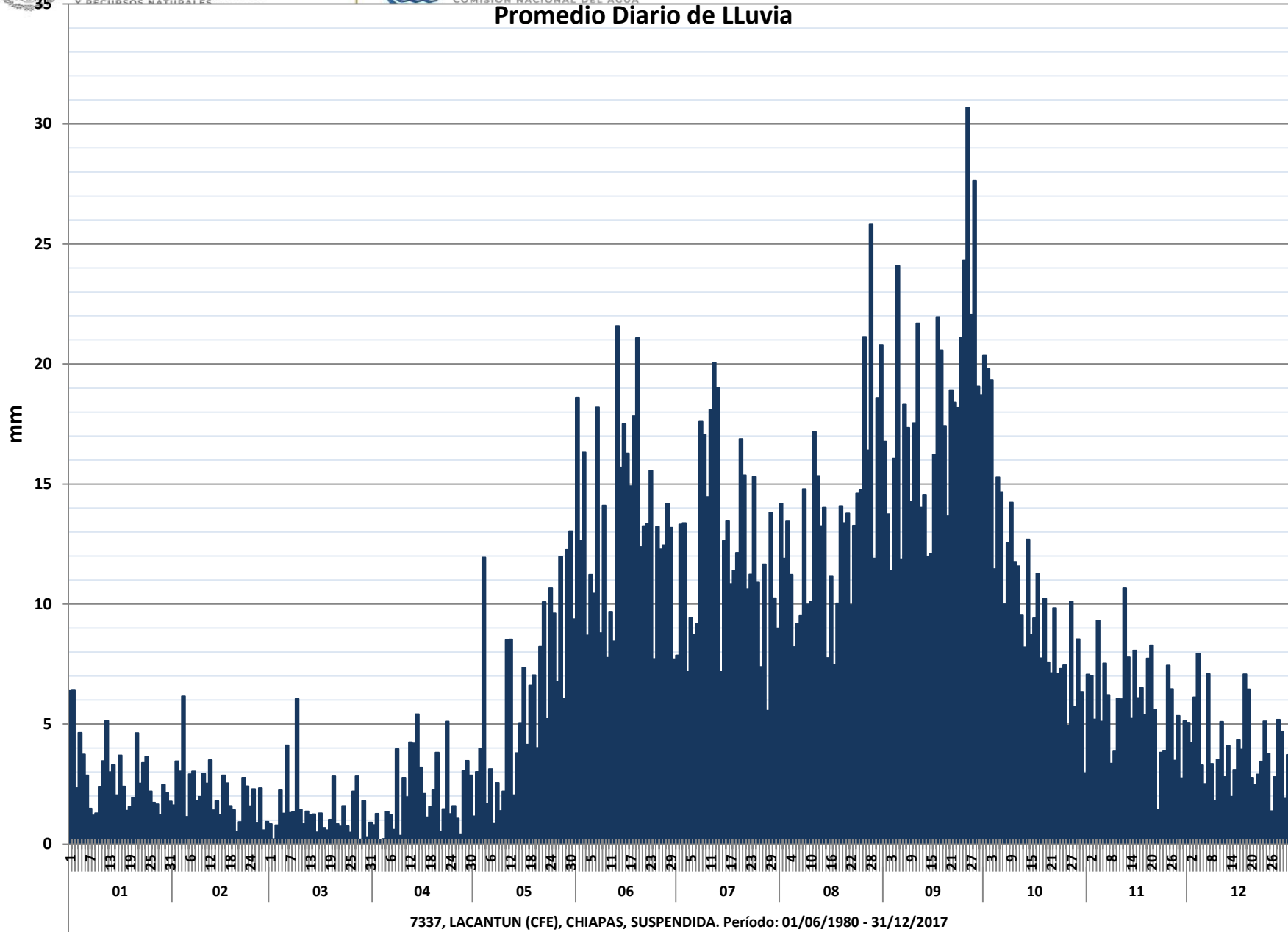
Evap (mm)					
Mes	Mín.	Prom.	Máx.	Desv. Est.	
ENE	0.0	1.5	6.0	0.8	
FEB	0.0	2.2	5.7	1.0	
MAR	0.1	3.2	9.6	1.3	
ABR	0.1	3.8	7.8	1.1	
MAY	0.2	3.8	8.7	1.1	
JUN	0.1	3.2	8.5	1.2	
JUL	0.1	2.8	7.5	1.1	
AGO	0.1	3.1	5.9	1.0	
SEP	0.1	2.9	14.3	1.3	
OCT	0.1	2.2	6.2	0.9	
NOV	0.0	1.7	5.9	0.8	
DIC	0.0	1.4	5.6	0.7	
Total general	0.0	2.7	14.3	1.3	

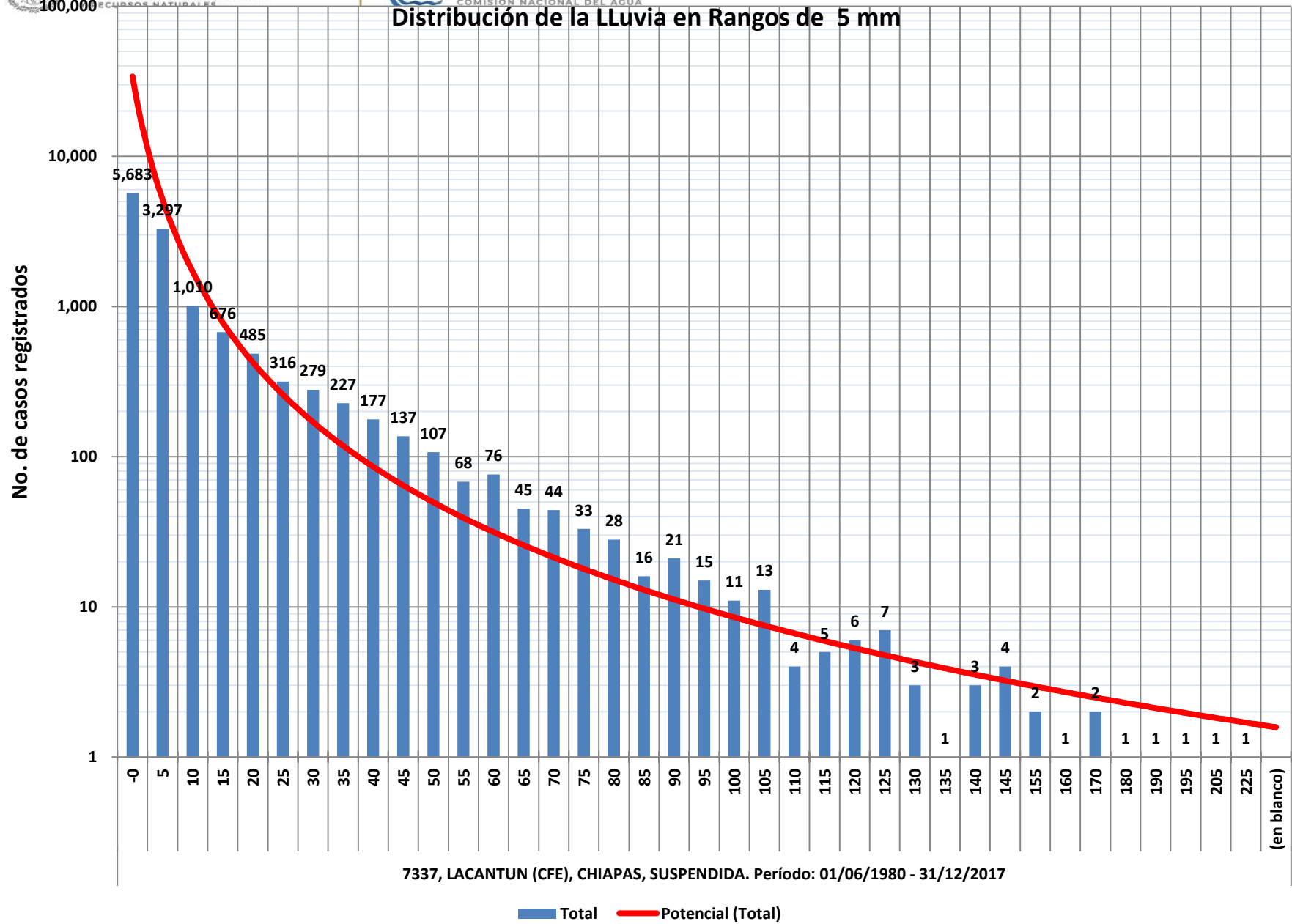






Promedio Diario de Lluvia





Estacion	7337
NOMBRE	LACANTUN (CFE)
ESTADO	CHIAPAS

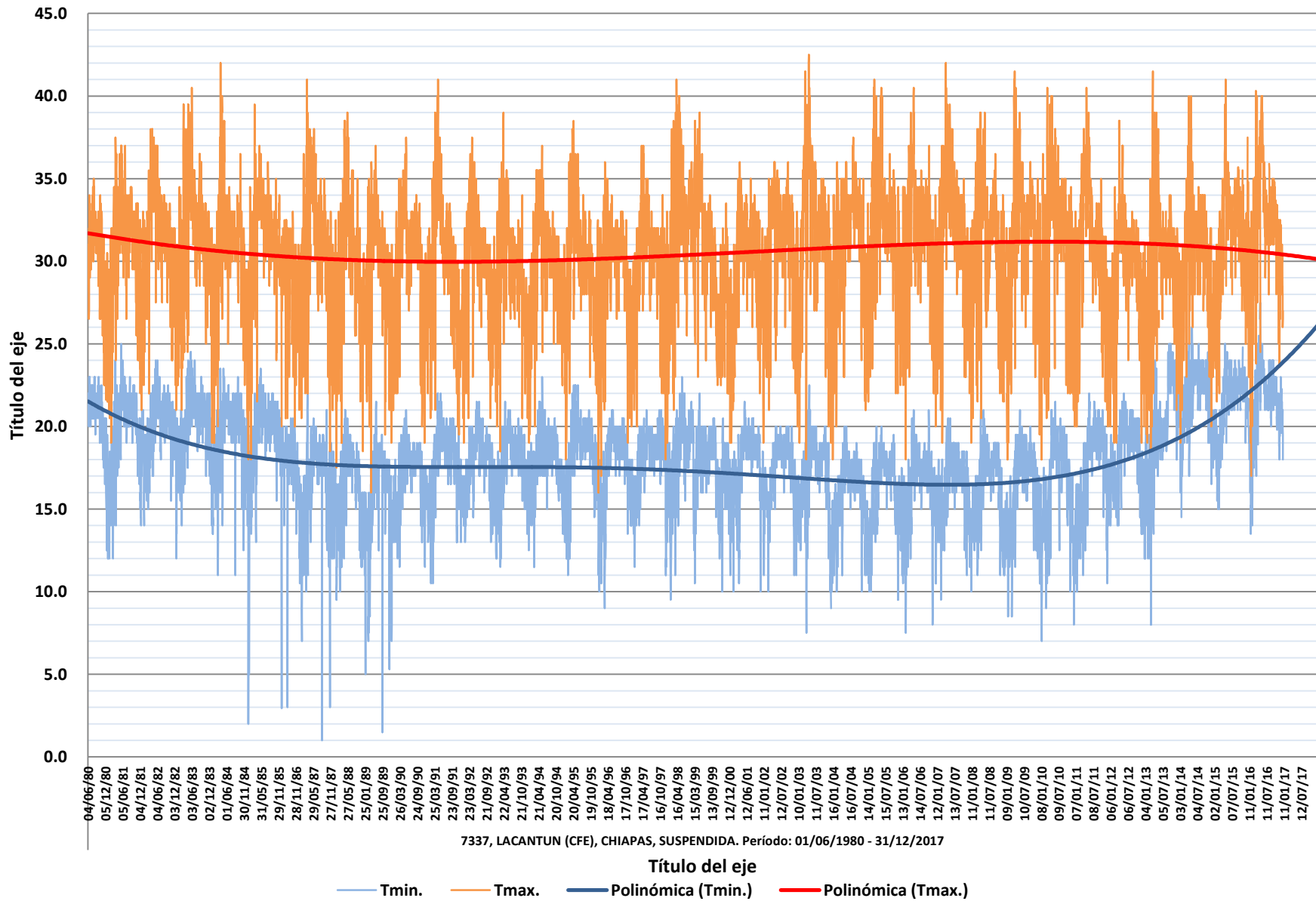
Década	Año	Temp Min (°C)			
		Mín.	Prom.	Máx.	Desv. Est.
1970	1980	12.5	20.4	23.0	1.8
	Total 1970	12.5	20.4	23.0	1.8
1980	1981	12.0	19.8	25.0	2.3
	1982	12.0	19.9	24.0	1.9
	1983	14.0	20.2	24.5	2.0
	1984	11.0	19.5	23.5	2.2
	1985	2.0	19.4	23.5	2.3
	1986	3.0	17.9	21.0	2.0
	1987	1.0	16.3	22.0	2.7
	1988	9.5	16.3	21.0	2.2
	1989	1.5	15.7	21.5	2.9
	1990	11.5	16.9	21.0	1.8
	Total 1980	1.0	18.3	25.0	2.8
1990	1991	10.5	17.8	22.0	2.1
	1992	13.0	17.8	21.5	1.7
	1993	11.5	17.7	21.5	1.9
	1994	11.5	17.9	23.0	1.7
	1995	11.0	18.2	22.5	2.2
	1996	9.0	17.4	21.0	2.4
	1997	11.0	17.9	21.0	1.9
	1998	9.5	18.2	23.0	2.4
	1999	10.0	17.6	22.0	2.2
	2000	11.0	17.1	20.5	1.9
	Total 1990	9.0	17.8	23.0	2.1
2000	2001	10.0	17.5	21.5	2.2
	2002	10.0	17.1	20.0	2.0
	2003	7.5	16.9	22.5	2.5
	2004	10.0	15.9	20.0	1.9
	2005	9.5	16.1	20.0	2.2
	2006	7.5	16.3	21.0	2.3
	2007	9.5	16.4	20.5	2.0
	2008	10.0	16.2	21.0	2.3
	2009	8.5	16.2	21.0	2.4
	2010	7.0	16.1	21.5	2.9
	Total 2000	7.0	16.5	22.5	2.3
2010	2011	10.0	17.4	22.0	2.5
	2012	12.0	18.2	22.0	2.0
	2013	8.0	19.9	25.0	2.8
	2014	14.5	21.6	26.0	2.0
	2015	15.0	21.2	25.0	2.0
	2016	13.5	21.4	27.5	2.2
	2017				
Total 2010	8.0	19.9	27.5	2.8	
Total general	1.0	17.9	27.5	2.8	

Estacion	7337
NOMBRE	LACANTUN (CFE)
ESTADO	CHIAPAS

Década	Año	Temp Max (°C)			
		Mín.	Prom.	Máx.	Desv. Est.
1970	1980	21.5	30.0	35.0	3.0
	Total 1970	21.5	30.0	35.0	3.0
1980	1981	19.0	30.8	37.5	3.3
	1982	21.0	31.6	38.0	2.9
	1983	19.0	31.6	40.5	3.6
	1984	19.0	30.8	42.0	3.6
	1985	18.0	31.4	39.5	3.2
	1986	20.0	29.2	34.0	2.4
	1987	18.5	30.9	41.0	3.8
	1988	17.5	30.0	39.0	4.1
	1989	16.0	29.5	37.0	3.4
	1990	19.0	29.9	37.5	3.2
	Total 1980	16.0	30.7	42.0	3.5
1990	1991	19.5	30.2	41.0	3.7
	1992	19.0	29.5	37.5	3.3
	1993	18.5	29.2	39.0	3.0
	1994	19.0	29.7	37.0	3.1
	1995	18.0	29.9	38.5	3.4
	1996	16.0	29.2	36.0	3.3
	1997	18.0	29.8	37.0	3.2
	1998	19.0	32.1	41.0	3.8
	1999	22.5	30.6	39.0	3.5
	2000	19.0	27.4	33.5	3.2
	Total 1990	16.0	29.9	41.0	3.5
2000	2001	19.0	30.0	36.0	3.0
	2002	19.0	30.8	36.0	3.4
	2003	18.0	31.8	42.5	4.5
	2004	18.0	31.3	37.5	3.3
	2005	21.5	32.0	41.0	3.6
	2006	18.0	31.3	40.5	3.5
	2007	19.0	32.0	42.0	3.6
	2008	19.0	31.2	39.0	3.8
	2009	18.0	31.5	41.5	3.9
	2010	18.0	31.0	40.5	4.3
	Total 2000	18.0	31.3	42.5	3.8
2010	2011	20.0	30.6	40.5	3.8
	2012	19.0	29.7	38.5	3.2
	2013	18.5	29.9	41.5	3.8
	2014	19.0	30.5	40.0	3.5
	2015	21.5	31.3	41.0	3.3
	2016	17.0	31.7	40.3	3.8
	2017				
Total 2010	17.0	30.6	41.5	3.6	
Total general	16.0	30.6	42.5	3.6	



Registro Diario de Temperaturas Mínima y Máxima



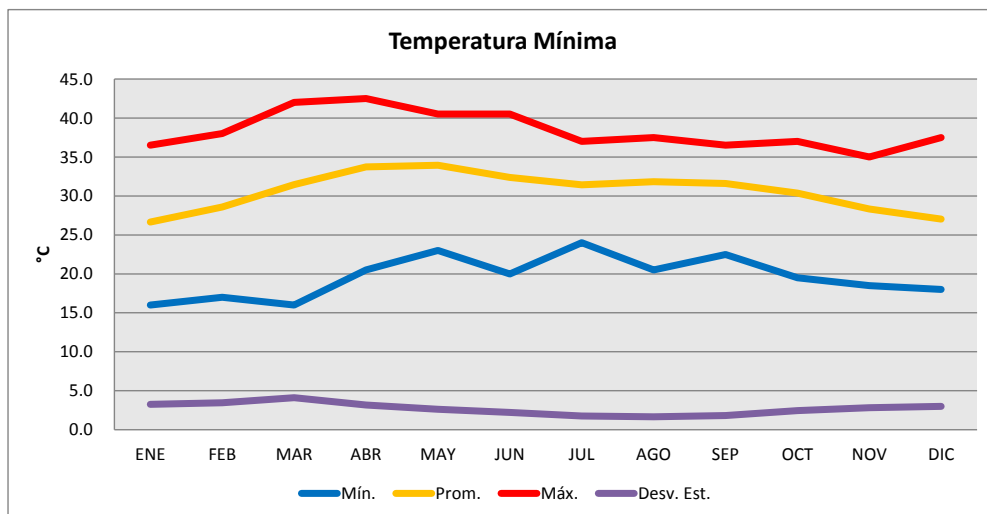
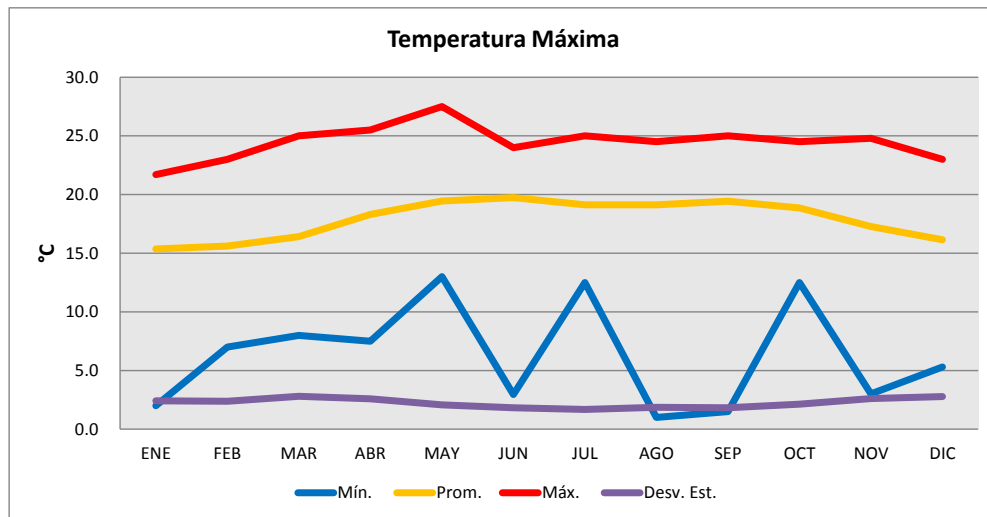


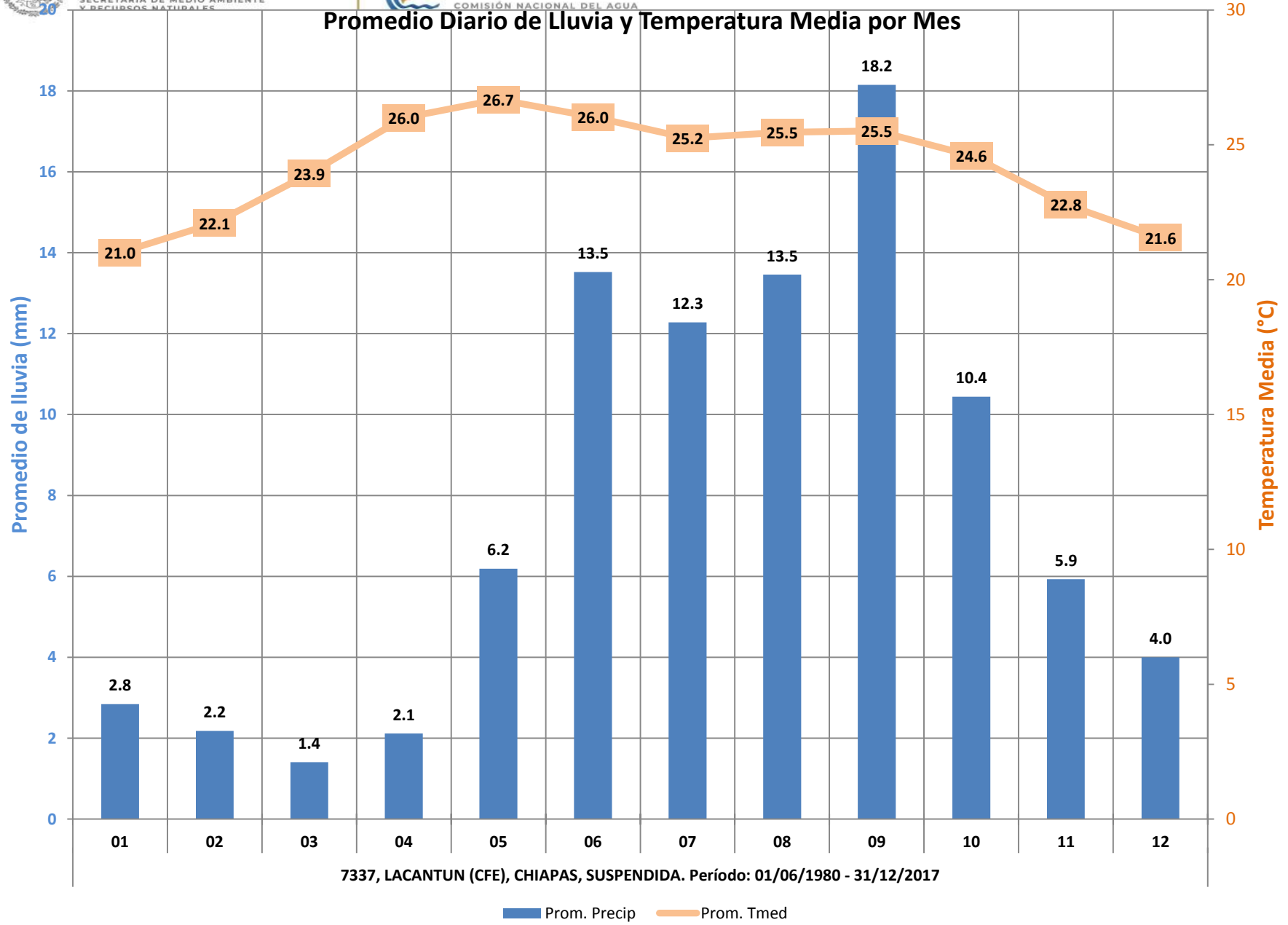
Estacion	7337
NOMBRE	LACANTUN (CFE)
ESTADO	CHIAPAS

Estacion	7337
NOMBRE	LACANTUN (CFE)
ESTADO	CHIAPAS

Temp Min (°C)					
Mes	Mín.	Prom.	Máx.	Desv. Est.	
ENE	2.0	15.4	21.7	2.4	
FEB	7.0	15.6	23.0	2.4	
MAR	8.0	16.4	25.0	2.8	
ABR	7.5	18.3	25.5	2.6	
MAY	13.0	19.5	27.5	2.1	
JUN	3.0	19.7	24.0	1.8	
JUL	12.5	19.1	25.0	1.7	
AGO	1.0	19.1	24.5	1.9	
SEP	1.5	19.4	25.0	1.8	
OCT	12.5	18.9	24.5	2.1	
NOV	3.0	17.3	24.8	2.6	
DIC	5.3	16.1	23.0	2.8	
Total general	1.0	17.9	27.5	2.8	

Temp Max (°C)					
Mes	Mín.	Prom.	Máx.	Desv. Est.	
ENE		16.0	26.6	36.5	3.3
FEB		17.0	28.6	38.0	3.5
MAR		16.0	31.4	42.0	4.1
ABR		20.5	33.7	42.5	3.2
MAY		23.0	33.9	40.5	2.6
JUN		20.0	32.4	40.5	2.2
JUL		24.0	31.4	37.0	1.8
AGO		20.5	31.8	37.5	1.7
SEP		22.5	31.6	36.5	1.8
OCT		19.5	30.4	37.0	2.4
NOV		18.5	28.3	35.0	2.8
DIC		18.0	27.0	37.5	3.0
Total general	16.0	30.6	42.5	3.6	



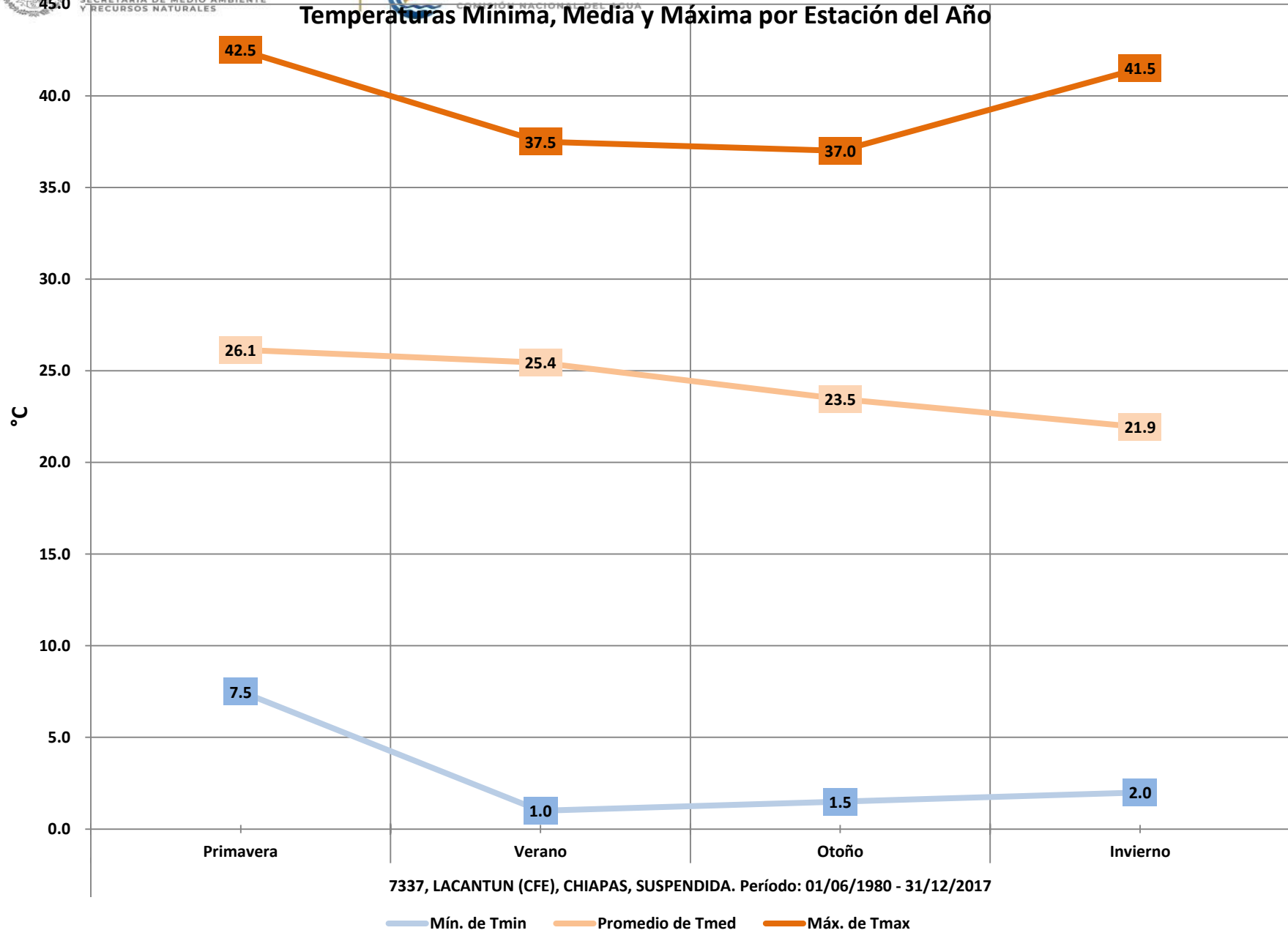


Estacion 7337
 NOMBRE LACANTUN (CFE)
 ESTADO CHIAPAS

Década	Año	Estación Promedios											
		Primavera		Verano			Otoño			Invierno			
		Lluvia (mm)	T min (°C)	T max (°C)	Lluvia (mm)	T min (°C)	T max (°C)	Lluvia (mm)	T min (°C)	T max (°C)	Lluvia (mm)	T min (°C)	T max (°C)
1970	1980	27.7	21.7	30.2	18.4	21.3	31.8	10.6	19.7	28.7	2.8	16.9	25.2
Total 1970		27.7	21.7	30.2	18.4	21.3	31.8	10.6	19.7	28.7	2.8	16.9	25.2
1980	1981	3.6	20.7	33.1	21.9	21.1	32.2	10.5	19.5	29.7	3.4	17.7	28.1
	1982	6.4	21.0	34.7	13.6	20.8	31.9	11.6	19.7	29.6	2.4	18.1	30.1
	1983	4.5	21.6	34.6	16.5	21.2	32.7	9.4	20.1	30.7	1.7	17.9	28.5
	1984	11.0	20.6	33.6	20.7	20.5	31.7	6.7	19.2	29.8	3.5	17.6	28.0
	1985	4.7	20.5	33.5	10.8	20.4	32.4	9.2	19.8	30.9	2.5	16.7	28.2
	1986	11.7	19.2	31.4	13.9	18.1	29.9	7.4	17.6	28.6	0.2	16.5	28.1
	1987	6.7	17.5	33.9	17.1	17.8	32.0	5.7	15.9	29.0	1.4	13.8	28.5
	1988	1.3	17.3	34.1	15.1	18.3	31.7	8.1	16.2	28.9	3.9	14.5	27.0
	1989	6.5	16.8	32.2	18.8	17.8	31.2	11.7	16.5	28.4	2.5	12.9	27.5
	1990	5.7	17.7	32.3	14.4	18.0	31.1	9.6	16.7	28.3	3.9	15.3	27.9
Total 1980		5.8	19.4	33.5	16.2	19.5	31.7	9.0	18.1	29.4	2.8	16.1	28.2
1990	1991	4.1	19.1	34.1	9.5	18.9	30.9	10.8	17.6	27.2	2.4	15.5	28.6
	1992	5.3	18.6	32.1	12.5	18.8	30.7	12.7	17.8	27.4	2.7	15.9	27.0
	1993	6.6	18.6	31.9	14.8	18.8	29.9	8.3	17.8	28.0	3.2	15.5	27.1
	1994	3.7	18.9	32.4	8.4	18.7	30.8	6.5	18.0	28.7	2.6	15.9	26.8
	1995	5.8	19.6	33.5	14.0	19.4	30.5	8.1	18.3	28.2	1.3	15.2	27.4
	1996	6.7	18.6	31.1	12.1	18.9	30.7	7.6	17.4	28.1	1.3	14.5	26.7
	1997	3.8	18.8	32.6	14.7	18.6	30.6	9.0	18.5	27.9	2.4	15.8	27.9
	1998	2.1	18.7	34.0	13.9	19.4	32.6	14.3	20.0	33.0	1.3	16.1	29.1
	1999	6.2	18.1	33.7	17.6	18.8	31.0	9.3	17.0	27.4	1.5	14.4	29.2
	2000							9.5	17.4	27.8	1.6	14.8	24.0
Total 1990		4.9	18.8	32.8	13.1	18.9	30.8	9.0	17.8	27.9	2.1	15.5	27.6
2000	2001	6.4	17.9	32.0	12.0	18.9	31.3	8.2	17.4	28.9	3.0	15.4	27.2
	2002	4.9	17.7	32.7	12.9	18.7	32.2	8.8	16.9	30.1	3.0	15.1	28.2
	2003	5.5	17.8	35.1	9.6	18.1	32.3	17.4	16.4	29.5	1.7	15.0	29.7
	2004	5.4	16.6	32.2	8.1	17.2	33.4	9.4	15.9	30.6	2.8	14.1	28.9
	2005	7.1	17.1	35.0	15.4	17.6	32.6	8.6	16.0	30.4	1.1	13.8	29.8
	2006	9.4	17.2	33.8	14.8	17.5	32.3	8.7	16.5	29.8	3.5	13.8	29.2
	2007	2.0	17.3	35.5	7.9	17.6	33.0	7.4	15.9	29.8	1.8	14.6	29.6
	2008	7.3	17.3	33.5	17.4	17.8	32.3	8.1	15.2	28.6	2.6	14.4	30.1
	2009	3.9	17.2	34.6	9.1	17.8	32.4	6.2	16.5	30.8	2.9	13.3	28.1
	2010	7.1	17.8	34.4	19.3	18.3	32.8	5.5	14.9	29.2	1.4	13.4	27.7
Total 2000		5.9	17.4	33.9	12.6	18.0	32.5	8.7	16.1	29.8	2.4	14.3	28.9
2010	2011	4.3	17.9	34.7	14.3	19.4	30.9	8.9	17.4	27.6	3.0	14.7	29.1
	2012	7.5	19.2	32.6	12.6	19.6	30.5	4.2	17.5	28.3	3.3	16.3	27.2
	2013	10.2	19.6	33.0	14.8	20.7	30.6	13.9	22.4	29.3	3.1	17.1	27.0
	2014	7.4	22.7	33.0	8.7	22.9	32.1	10.6	20.9	28.3	1.8	19.7	28.6
	2015	8.6	21.9	33.9	9.8	22.4	32.8	9.6	22.2	30.9	3.6	18.7	28.1
	2016	4.1	23.1	35.1	10.3	22.2	32.6	8.1	21.3	30.8	1.3	19.0	28.5
	2017	7.1			8.9			6.4			0.4		
Total 2010		7.1	20.7	33.7	11.4	21.2	31.5	8.8	20.2	29.2	2.3	17.5	28.1
Total general		6.0	18.9	33.5	13.6	19.2	31.7	8.9	17.9	29.1	2.4	15.6	28.2



Temperaturas Mínima, Media y Máxima por Estación del Año




Lluvia Promedio y Máxima, por Estación del Año
