



Datos de la Estación

ESTACIÓN:	6039
NOMBRE:	MINATITLAN
ESTADO:	COLIMA
MUNICIPIO:	MINATITLAN
LATITUD (°):	19.3883
LONGITUD (°):	-104.0469
ALTURA (msn):	766
SITUACIÓN:	OPERANDO
DATOS DESDE:	1 de junio de 1958
HASTA:	30 de septiembre de 2018

Inventario de Registros por Década Año

Estacion		N° de Casos					
Decada	Año	Lluvia	Temp min	Temp max	Temp amb	Evaporación	
1950	1958	214					
	1959	273					
	1960	214					
Total 1950		701					
1960	1961	360					
	1962	365					
	1963	363				150	
	1964	361	329	304	329	326	
	1965	362	365	360	365	365	
	1966	360	365	360	365	365	
	1967	333	337	333	337	337	
	1968	361	366	361	366	365	
	1969	365	363	365	363	365	
	1970	365	364	364	365	365	
	Total 1960		3,595	2,489	2,447	2,490	2,638
1970	1971	365	365	365	365	365	
	1972	365	365	365	365	365	
	1973	365	365	365	365	365	
	1974	365	365	365	365	365	
	1975	365	365	365	365	365	
	1976	366	366	366	366	366	
	1977	365	365	365	365	365	
	1978	365	365	365	365	365	
	1979	365	364	359	365	365	
	1980	253	254	253	254	213	
	Total 1970		3,539	3,539	3,533	3,540	3,499
1980	1981	244	244	244	244	62	
	1982	365	365	365	365	262	
	1983	365	365	365	365	335	
	1984	366	366	365	366	335	
	1985	337	336	333	338	334	
	1986	269	278	277	278	213	
	1987	262	262	262	263	182	
	1988	235	235	235	235	62	
	1989	341	341	339	342	139	
	1990	334	334	334	334	174	
	Total 1980		3,118	3,126	3,119	3,130	2,098
1990	1991	334	334	334	334	304	
	1992	365	365	365	365	334	
	1993	242	241	241	241	241	
	1994	245	238	237	238	122	
	1995	184	184	184	184		
	1996	292	291	291	291	184	
	1997	315	312	311	312	274	
	1998	365	212	212	212	365	
	1999	334	184	182	184	333	
	2000	366	366	366	366	366	
	Total 1990		3,042	2,727	2,723	2,727	2,523
2000	2001	340	340	328	340	363	
	2002	365	365	353	365	212	
	2003	365	365	353	365	221	
	2004	366	366	354	366	278	



Datos de la Estación

ESTACIÓN:	6039
NOMBRE:	MINATITLAN
ESTADO:	COLIMA
MUNICIPIO:	MINATITLAN

Inventario de Registros por Década Año

Estacion		N° de Casos					
Decada	Año	Lluvia	Temp min	Temp max	Temp amb	Evaporación	
2000	2005	365	365	353	365	242	
	2006	365	365	354	365	365	
	2007	365	365	365	365	181	
	2008	366	366	366	366		
	2009	365	365	365	365		
	2010	364	365	365	365		
Total 2000		3,626	3,627	3,556	3,627	1,862	
2010	2011	365	365	365	365		
	2012	366	366	366	366		
	2013	365	365	365	365		
	2014	365	365	365	365		
	2015	365	365	365	365		
	2016	366	366	366	366		
	2017	365	365	365	365		
	2018	181	181	181	181		
Total 2010		2,738	2,738	2,738	2,738		
Total general		20,359	18,246	18,116	18,252	12,620	

Estacion	6039
NOMBRE	MINATITLAN
ESTADO	COLIMA

Década	Año	Lluvia (mm)			
		Mín.	Prom.	Máx.	Desv. Est.
1950	1958	0.0	5.2	70.5	10.6
	1959	0.0	5.2	64.0	11.0
	1960	0.0	5.0	62.0	10.2
Total 1950		0.0	5.1	70.5	10.6
1960	1961	0.0	3.7	67.0	9.9
	1962	0.0	4.2	93.0	12.3
	1963	0.0	5.1	89.0	13.1
	1964	0.0	3.6	90.5	10.3
	1965	0.0	3.7	90.0	10.3
	1966	0.0	4.4	69.0	10.4
	1967	0.0	5.2	115.0	13.5
	1968	0.0	4.4	212.0	16.0
	1969	0.0	3.6	58.0	9.7
	1970	0.0	4.1	90.0	10.7
Total 1960		0.0	4.2	212.0	11.8
1970	1971	0.0	4.4	94.5	12.8
	1972	0.0	4.5	79.0	11.7
	1973	0.0	4.6	69.0	12.3
	1974	0.0	5.1	115.0	12.7
	1975	0.0	7.5	78.0	16.2
	1976	0.0	6.8	87.5	15.3
	1977	0.0	3.9	72.0	10.4
	1978	0.0	3.9	70.0	10.9
	1979	0.0	3.3	124.0	11.7
	1980	0.0	2.6	95.0	10.0
Total 1970		0.0	4.7	124.0	12.7
1980	1981	0.0	6.1	67.5	11.0
	1982	0.0	3.5	48.0	8.6
	1983	0.0	4.3	154.0	13.3
	1984	0.0	4.3	86.1	11.6
	1985	0.0	3.5	79.4	10.7
	1986	0.0	2.1	88.5	9.3
	1987	0.0	4.4	215.2	17.2
	1988	0.0	4.7	184.0	20.2
	1989	0.0	4.3	88.4	12.4
	1990	0.0	3.2	94.9	10.3
Total 1980		0.0	4.0	215.2	12.6
1990	1991	0.0	2.5	68.4	9.2
	1992	0.0	4.7	110.2	13.4
	1993	0.0	2.4	55.3	8.4
	1994	0.0	4.2	78.6	11.6
	1995	0.0	5.0	80.8	12.3
	1996	0.0	5.0	178.6	15.5
	1997	0.0	3.3	100.0	11.9
	1998	0.0	4.6	101.6	12.5
	1999	0.0	5.9	248.9	20.9
	2000	0.0	3.0	167.0	11.7
Total 1990		0.0	4.0	248.9	13.3
2000	2001	0.0	3.2	83.4	9.3
	2002	0.0	3.5	102.3	12.5
	2003	0.0	3.6	127.3	13.0
	2004	0.0	4.7	100.0	13.4
	2005	0.0	1.0	121.9	8.0
	2006	0.0	3.1	143.1	10.6
	2007	0.0	3.8	130.8	15.0
	2008	0.0	4.8	86.1	12.8
	2009	0.0	3.5	78.5	11.2
	2010	0.0	4.5	106.1	13.3
Total 2000		0.0	3.6	143.1	12.1

Estacion	6039
NOMBRE	MINATITLAN
ESTADO	COLIMA

Década	Año	Evap (mm)			
		Mín.	Prom.	Máx.	Desv. Est.
1950	1958				
	1959				
	1960				
Total 1950					
1960	1961				
	1962				
	1963	0.1	3.4	10.0	1.8
	1964	0.4	4.8	10.4	2.3
	1965	0.2	4.6	11.8	2.3
	1966	0.2	5.4	11.1	2.3
	1967	0.2	5.1	12.2	2.2
	1968	0.7	5.4	11.0	2.4
	1969	0.1	5.4	14.1	2.6
	1970	0.1	5.6	10.9	2.0
Total 1960		0.1	5.1	14.1	2.4
1970	1971	0.1	5.3	9.9	2.3
	1972	0.6	5.6	12.0	1.9
	1973	0.8	5.7	9.9	1.6
	1974	0.2	4.9	8.9	1.9
	1975	0.1	3.9	8.5	1.5
	1976	0.3	4.9	9.2	1.9
	1977	0.2	4.1	7.7	1.8
	1978	0.5	4.4	9.4	1.6
	1979	0.8	4.4	9.4	1.6
	1980	0.3	5.5	14.6	2.4
Total 1970		0.1	4.8	14.6	2.0
1980	1981	1.1	3.0	6.9	1.3
	1982	0.9	4.5	9.9	2.0
	1983	0.5	4.3	11.3	2.1
	1984	0.4	4.5	11.3	2.0
	1985	1.1	4.0	10.0	2.0
	1986	1.3	3.9	8.1	1.4
	1987	0.5	3.4	12.3	1.6
	1988	1.7	3.2	6.4	0.9
	1989	1.3	4.4	9.1	1.0
	1990	0.1	4.5	9.7	2.3
Total 1980		0.1	4.1	12.3	1.9
1990	1991	0.1	3.5	9.5	1.3
	1992	0.5	3.5	9.9	1.5
	1993	0.7	3.6	10.6	1.4
	1994	1.0	3.2	9.9	1.6
	1995				
	1996	0.0	3.3	10.6	2.3
	1997	0.4	4.6	12.9	2.4
	1998	0.4	3.7	11.0	1.6
	1999	0.6	3.8	12.4	1.7
	2000	0.2	3.5	11.6	1.6
Total 1990		0.0	3.7	12.9	1.7
2000	2001	0.5	4.0	10.6	1.7
	2002	0.6	3.5	11.1	1.4
	2003	1.8	3.9	7.4	1.2
	2004	0.8	4.0	10.4	1.6
	2005	0.6	3.2	7.5	0.9
	2006	0.3	3.9	9.8	1.5
	2007	1.1	4.7	10.3	1.4
	2008				
	2009				
	2010				
Total 2000		0.3	3.9	11.1	1.5



Estacion	6039
NOMBRE	MINATITLAN
ESTADO	COLIMA

Estacion	6039
NOMBRE	MINATITLAN
ESTADO	COLIMA

Década	Año	Lluvia (mm)			
		Mín.	Prom.	Máx.	Desv. Est.
2010	2011	0.0	5.6	404.5	24.2
	2012	0.0	3.4	138.0	12.5
	2013	0.0	4.7	129.8	14.0
	2014	0.0	4.8	70.0	11.7
	2015	0.0	4.3	254.0	17.6
	2016	0.0	3.4	180.0	13.9
	2017	0.0	3.7	110.0	12.1
	2018	0.0	1.4	90.0	8.3
Total 2010		0.0	4.1	404.5	15.3
Total general		0.0	4.1	404.5	12.8

Década	Año	Evap (mm)			
		Mín.	Prom.	Máx.	Desv. Est.
2010	2011				
	2012				
	2013				
	2014				
	2015				
	2016				
	2017				
	2018				
Total 2010					
Total general		0.0	4.4	14.6	2.0

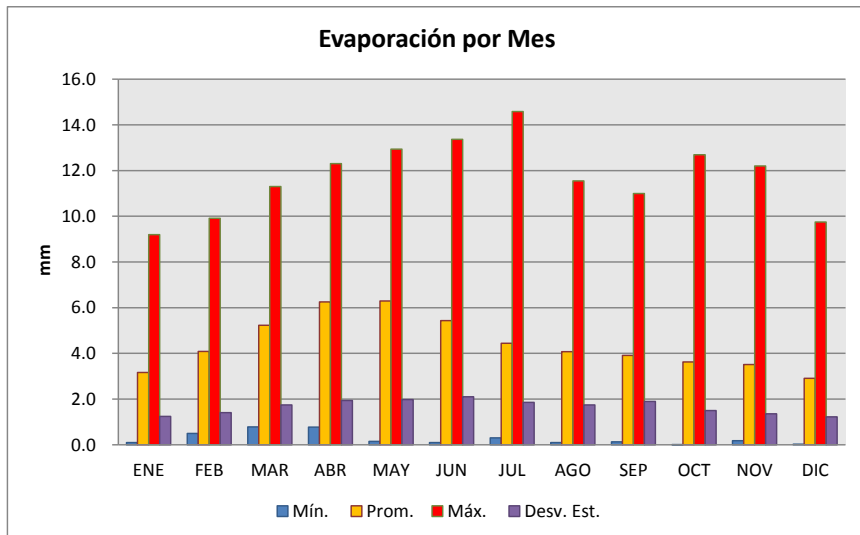
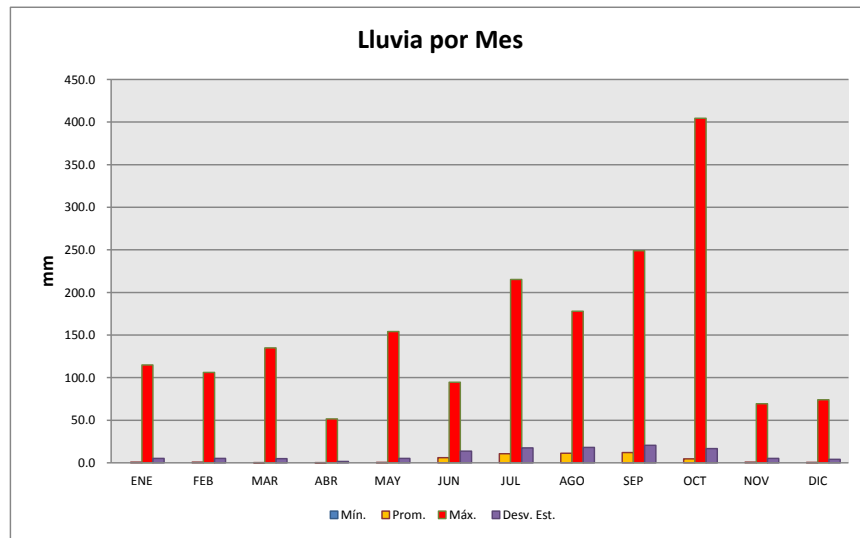


Estación	6039
NOMBRE	MINATITLAN
ESTADO	COLIMA

Estación	6039
NOMBRE	MINATITLAN
ESTADO	COLIMA

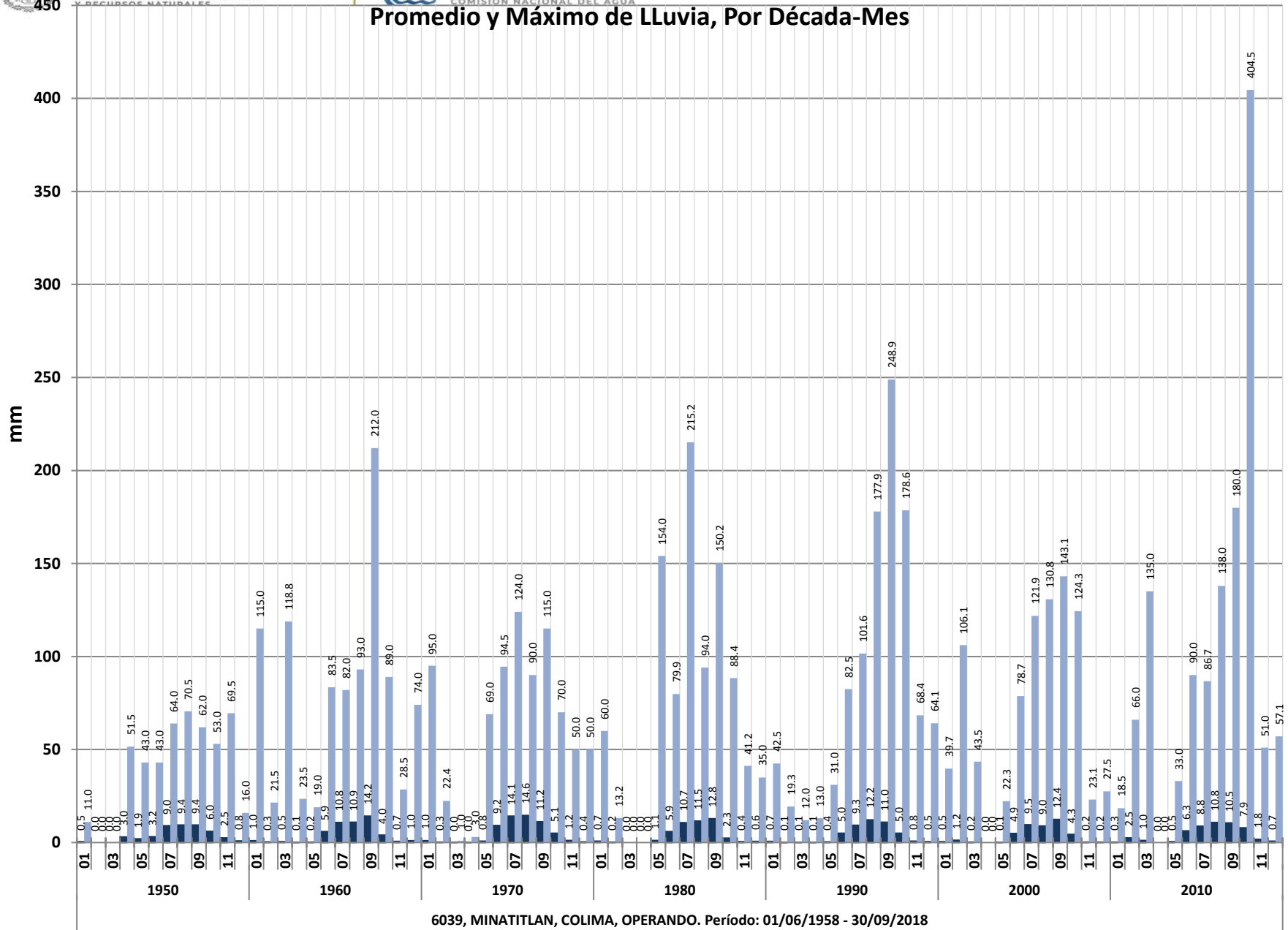
Lluvia (mm)					
Mes	Mín.	Prom.	Máx.	Desv. Est.	
ENE	0.0	0.7	115.0	5.3	
FEB	0.0	0.8	106.1	5.3	
MAR	0.0	0.3	135.0	4.9	
ABR	0.0	0.1	51.5	1.7	
MAY	0.0	0.5	154.0	5.3	
JUN	0.0	6.1	94.5	13.7	
JUL	0.0	10.6	215.2	17.7	
AGO	0.0	11.3	177.9	18.1	
SEP	0.0	11.9	248.9	20.5	
OCT	0.0	4.6	404.5	16.8	
NOV	0.0	0.8	69.5	5.2	
DIC	0.0	0.6	74.0	4.1	
Total general	0.0	4.1	404.5	12.8	

Evap (mm)					
Mes	Mín.	Prom.	Máx.	Desv. Est.	
ENE		0.1	3.2	9.2	1.2
FEB		0.5	4.1	9.9	1.4
MAR		0.8	5.2	11.3	1.7
ABR		0.8	6.2	12.3	1.9
MAY		0.2	6.3	12.9	2.0
JUN		0.1	5.4	13.4	2.1
JUL		0.3	4.4	14.6	1.9
AGO		0.1	4.1	11.6	1.7
SEP		0.1	3.9	11.0	1.9
OCT		0.0	3.6	12.7	1.5
NOV		0.2	3.5	12.2	1.4
DIC		0.0	2.9	9.8	1.2
Total general	0.0	4.4	14.6	2.0	





Promedio y Máximo de Lluvia, Por Década-Mes

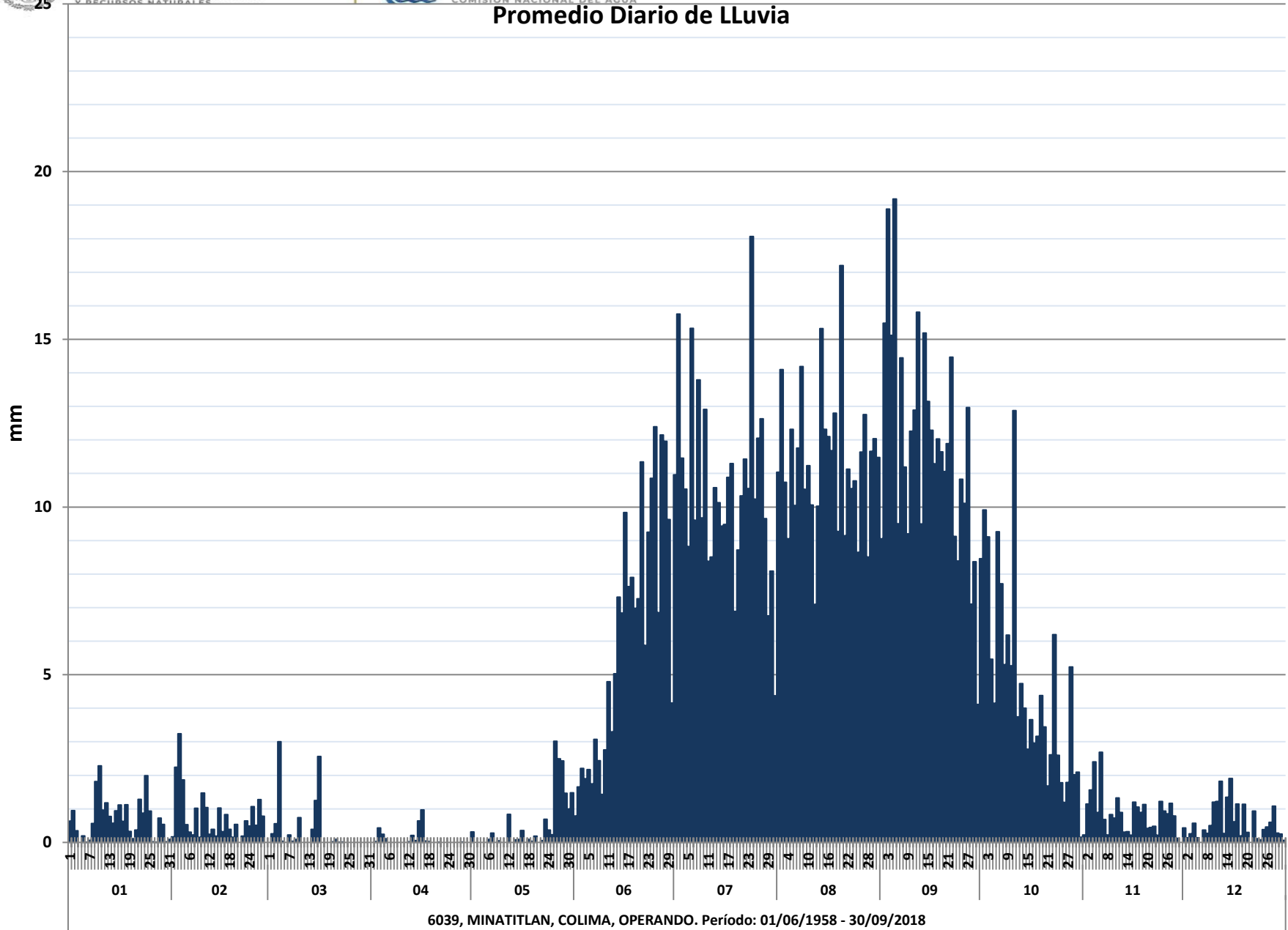


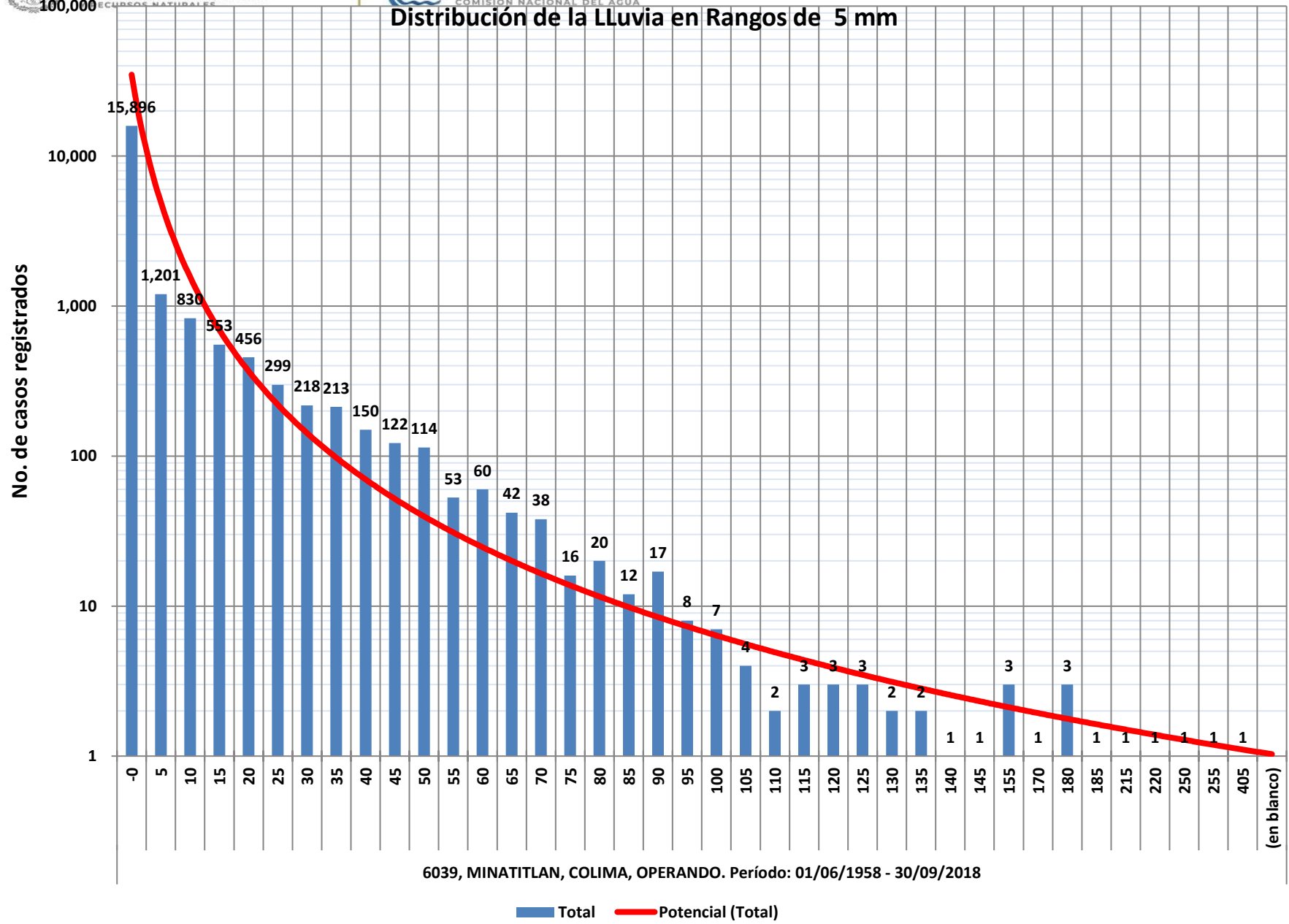
6039, MINATITLAN, COLIMA, OPERANDO. Periodo: 01/06/1958 - 30/09/2018



25

Promedio Diario de Lluvia





Estacion	6039
NOMBRE	MINATITLAN
ESTADO	COLIMA

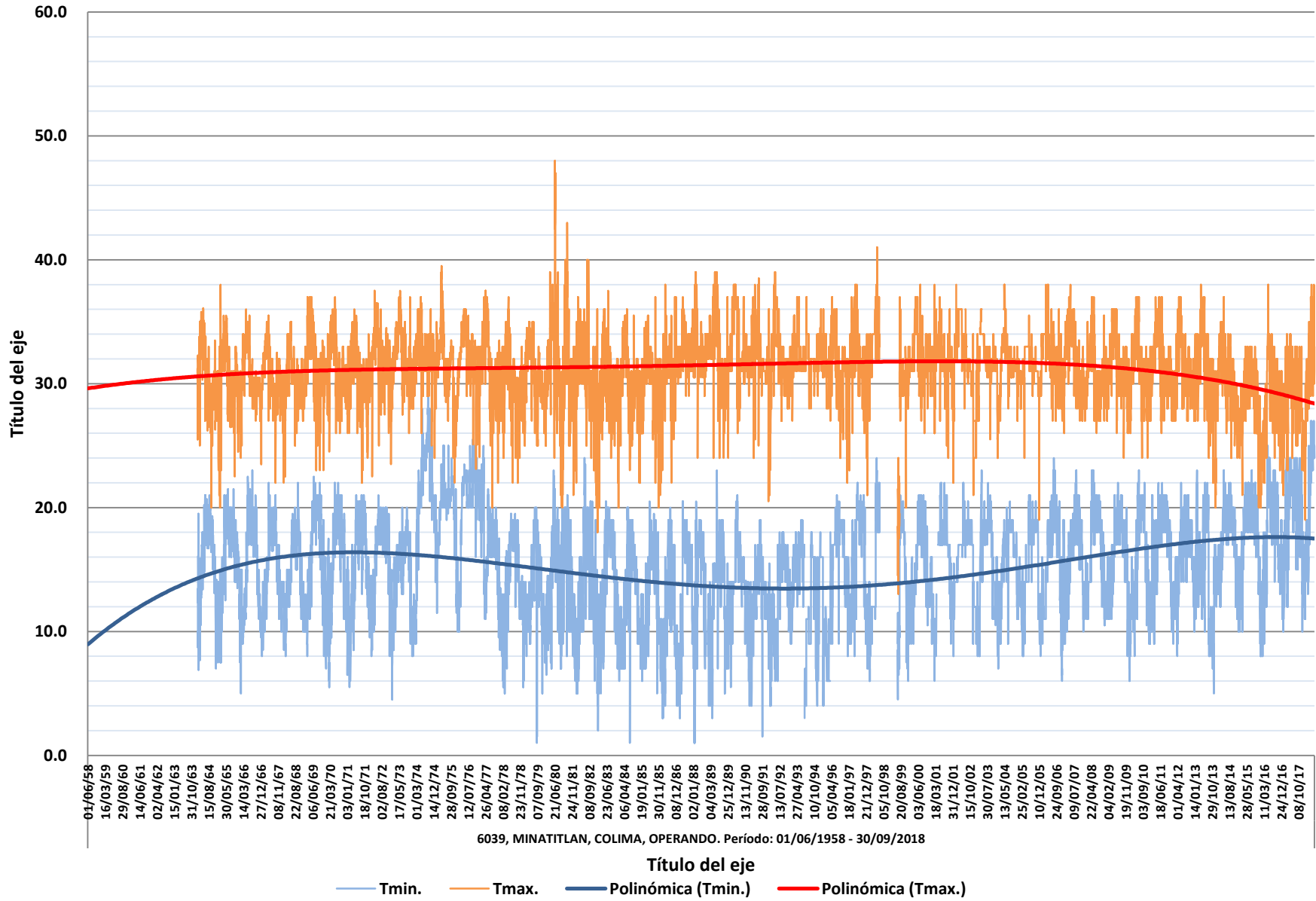
Temp Min (°C)						
Década	Año	Mín.	Prom.	Máx.	Desv. Est.	
2010	2012	8.0	15.8	22.0	2.9	
	2013	5.0	14.5	23.0	4.1	
	2014	11.0	17.3	23.0	2.5	
	2015	10.0	17.8	23.0	3.1	
	2016	8.0	17.3	25.0	4.3	
	2017	10.0	18.6	24.0	3.5	
	2018	11.0	19.8	27.0	4.6	
Total 2010		5.0	17.1	27.0	3.8	
Total general		1.0	15.3	29.0	4.1	

Estacion	6039
NOMBRE	MINATITLAN
ESTADO	COLIMA

Temp Max (°C)						
Década	Año	Mín.	Prom.	Máx.	Desv. Est.	
2010	2012	27.0	31.1	37.0	2.4	
	2013	20.0	31.0	38.0	2.7	
	2014	22.0	30.4	37.0	2.5	
	2015	20.0	28.8	33.0	2.5	
	2016	20.0	28.3	38.0	3.2	
	2017	21.0	28.8	34.0	3.0	
	2018	19.0	30.2	38.0	4.0	
Total 2010		19.0	30.0	38.0	3.0	
Total general		13.0	31.2	48.0	2.7	



Registro Diario de Temperaturas Mínima y Máxima



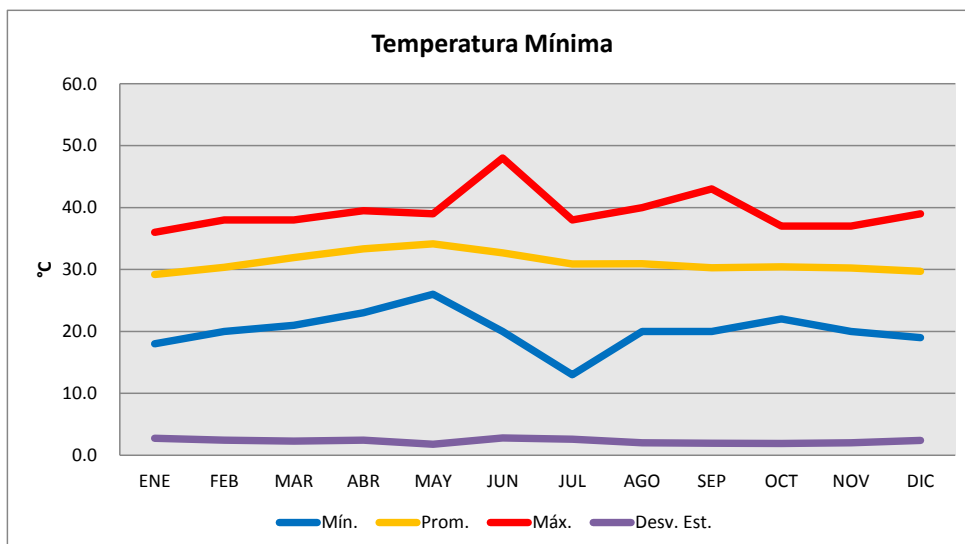
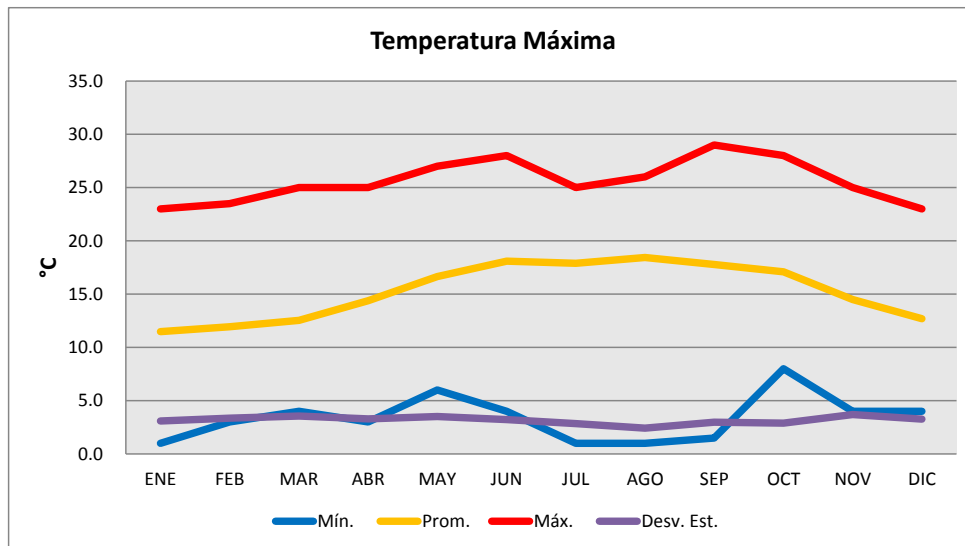


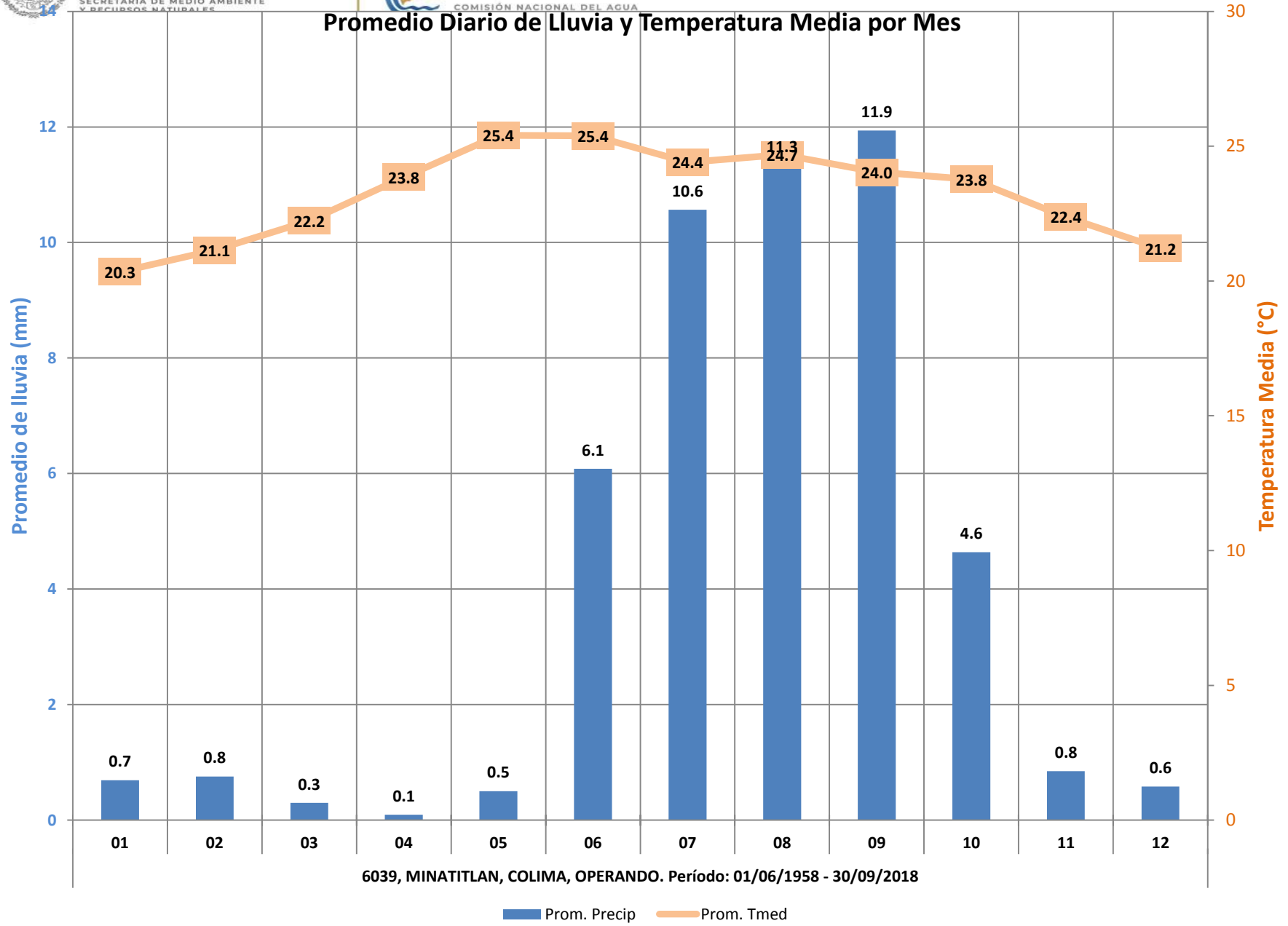
Estacion	6039
NOMBRE	MINATITLAN
ESTADO	COLIMA

Estacion	6039
NOMBRE	MINATITLAN
ESTADO	COLIMA

Temp Min (°C)					
Mes	Mín.	Prom.	Máx.	Desv. Est.	
ENE	1.0	11.5	23.0	3.1	
FEB	3.0	11.9	23.5	3.4	
MAR	4.0	12.5	25.0	3.6	
ABR	3.0	14.4	25.0	3.3	
MAY	6.0	16.7	27.0	3.5	
JUN	4.0	18.1	28.0	3.2	
JUL	1.0	17.9	25.0	2.9	
AGO	1.0	18.4	26.0	2.4	
SEP	1.5	17.8	29.0	3.0	
OCT	8.0	17.1	28.0	2.9	
NOV	4.0	14.5	25.0	3.7	
DIC	4.0	12.7	23.0	3.3	
Total general	1.0	15.3	29.0	4.1	

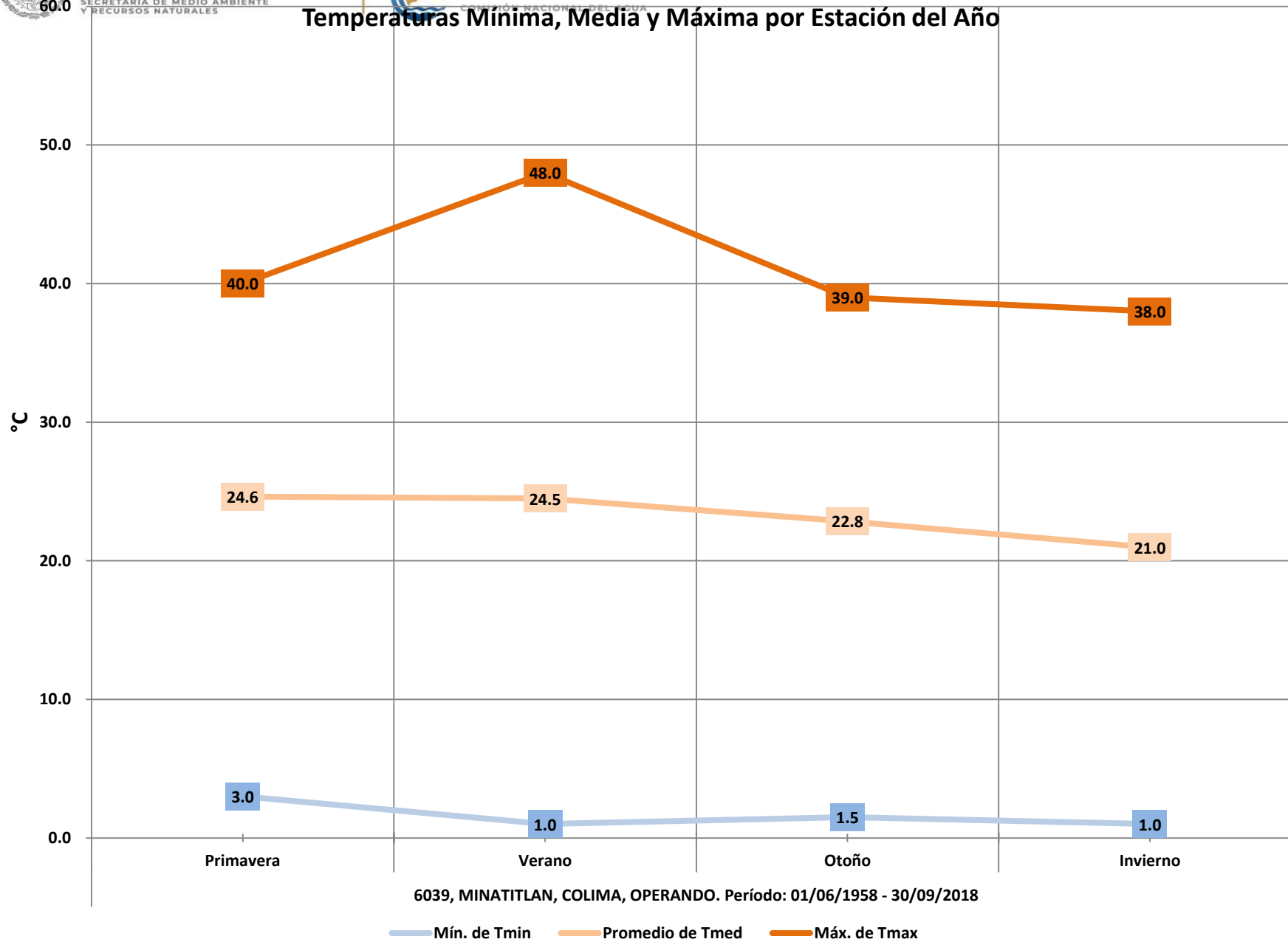
Temp Max (°C)					
Mes	Mín.	Prom.	Máx.	Desv. Est.	
ENE		18.0	29.2	36.0	2.7
FEB		20.0	30.4	38.0	2.4
MAR		21.0	31.9	38.0	2.3
ABR		23.0	33.3	39.5	2.4
MAY		26.0	34.1	39.0	1.8
JUN		20.0	32.7	48.0	2.8
JUL		13.0	30.9	38.0	2.6
AGO		20.0	30.9	40.0	2.0
SEP		20.0	30.3	43.0	1.9
OCT		22.0	30.4	37.0	1.9
NOV		20.0	30.2	37.0	2.0
DIC		19.0	29.7	39.0	2.4
Total general	13.0	31.2	48.0	2.7	







Temperaturas Mínima, Media y Máxima por Estación del Año





Lluvia Promedio y Máxima, por Estación del Año

