



Datos de la Estación

ESTACIÓN:	23012
NOMBRE:	COBA
ESTADO:	QUINTANA ROO
MUNICIPIO:	SOLIDARIDAD
LATITUD (°):	20.4886
LONGITUD (°):	-87.7375
ALTURA (msn):	5
SITUACIÓN:	OPERANDO
DATOS DESDE:	1 de julio de 1971
HASTA:	30 de noviembre de 2017

Inventario de Registros por Década Año

Estacion		N°de Casos					
Decada	Año	Lluvia	Temp min	Temp max	Temp amb	Evaporación	
1970	1971	184	184	184	184	92	
	1972	335	335	335	335	335	
	1973	365	365	365	365	365	
	1974	365	365	365	365	365	
	1975	120	120	120	120	120	
	1978	31	31	31	31	29	
Total 1970		1,400	1,400	1,400	1,400	1,306	
1980	1987	245	230	230	230	230	
	1988	365	362	362	362	338	
	1989	334	334	334	334	329	
	1990	334	334	333	334	331	
	Total 1980		1,278	1,260	1,259	1,260	1,228
1990	1992	366	366	366	366	363	
	1993	365	365	365	365	357	
	1994	365	365	365	365	362	
	1995	365	365	365	365	359	
	1996	366	366	366	366	363	
	1997	365	365	365	365	360	
	1998	365	365	365	365	353	
	1999	365	365	365	365	349	
	2000	366	366	366	366	353	
	Total 1990		3,288	3,288	3,288	3,288	3,219
	2000	2001	365	365	365	365	360
2002		365	365	365	365	361	
2003		61	61	61	61	61	
2004		366	366	366	366	364	
2005		326	318	313	318	315	
2006		212	212	212	212	211	
2007		365	349	308	349	348	
2008		366	364	364	364	365	
2009		365	365	364	365	362	
2010		365	364	363	364	45	
Total 2000			3,156	3,129	3,081	3,129	2,792
2010	2011	365	332	332	332		
	2012	366	365	364	365		
	2013	365	364	362	364	35	
	2014	365	365	365	365	356	
	2015	365	365	177	365	347	
	2016	366	364	362	364	350	
	2017	333	333	330	333	294	
Total 2010		2,525	2,488	2,292	2,488	1,382	
Total general		11,647	11,565	11,320	11,565	9,927	

Estacion	23012
NOMBRE	COBA
ESTADO	QUINTANA ROO

		Lluvia (mm)				
Década	Año	Mín.	Prom.	Máx.	Desv. Est.	
1970	1971	0.0	4.0	70.5	9.2	
	1972	0.0	3.3	78.3	8.8	
	1973	0.0	2.7	86.7	8.8	
	1974	0.0	3.3	84.8	10.3	
	1975	0.0	1.1	27.4	4.2	
	1978	0.0	0.9	14.0	2.7	
Total 1970		0.0	3.0	86.7	8.9	
1980	1987	0.0	3.3	61.0	8.4	
	1988	0.0	3.9	100.5	11.1	
	1989	0.0	3.0	55.0	8.4	
	1990	0.0	3.4	69.0	8.9	
Total 1980		0.0	3.4	100.5	9.4	
1990	1992	0.0	2.8	65.2	8.1	
	1993	0.0	3.9	102.0	12.9	
	1994	0.0	2.9	80.0	9.2	
	1995	0.0	3.4	80.0	9.4	
	1996	0.0	2.6	71.0	8.5	
	1997	0.0	3.9	100.0	11.1	
	1998	0.0	4.0	96.5	10.3	
	1999	0.0	3.9	60.0	9.7	
	2000	0.0	3.1	86.5	9.7	
	Total 1990		0.0	3.4	102.0	10.0
	2000	2001	0.0	3.2	117.3	12.3
2002		0.0	2.3	46.8	6.6	
2003		0.0	2.0	17.3	4.2	
2004		0.0	2.9	95.5	10.3	
2005		0.0	3.8	165.5	13.1	
2006		0.0	1.9	36.7	6.1	
2007		0.0	2.6	127.0	9.1	
2008		0.0	2.0	78.7	7.2	
2009		0.0	2.2	58.8	6.5	
2010		0.0	3.3	103.8	9.1	
Total 2000		0.0	2.7	165.5	9.3	
2010	2011	0.0	4.3	48.8	8.9	
	2012	0.0	3.1	46.8	7.1	
	2013	0.0	5.8	56.9	11.2	
	2014	0.0	3.7	190.4	13.2	
	2015	0.0	3.1	118.6	11.2	
	2016	0.0	2.3	48.9	6.8	
	2017	0.0	3.3	85.4	9.7	
Total 2010		0.0	3.6	190.4	10.0	
Total general		0.0	3.2	190.4	9.6	

Estacion	23012
NOMBRE	COBA
ESTADO	QUINTANA ROO

		Evap (mm)				
Década	Año	Mín.	Prom.	Máx.	Desv. Est.	
1970	1971	1.1	4.4	7.9	1.6	
	1972	0.8	4.6	10.4	1.9	
	1973	1.0	4.6	8.6	1.7	
	1974	0.7	5.6	13.0	2.1	
	1975	1.7	6.4	10.6	2.0	
	1978	1.4	7.3	11.8	2.8	
Total 1970		0.7	5.1	13.0	2.1	
1980	1987	0.1	3.7	8.8	2.0	
	1988	0.1	3.5	10.7	2.2	
	1989	0.1	4.5	10.2	2.2	
	1990	0.3	4.2	8.9	1.6	
Total 1980		0.1	4.0	10.7	2.0	
1990	1992	0.1	3.9	9.6	1.7	
	1993	0.5	4.1	10.9	1.7	
	1994	0.1	4.3	9.4	1.8	
	1995	0.2	4.3	9.1	1.9	
	1996	0.2	4.0	8.6	1.7	
	1997	0.1	3.8	9.7	1.7	
	1998	0.1	4.3	9.9	2.0	
	1999	0.1	4.0	9.9	2.1	
	2000	0.1	4.1	9.2	1.9	
	Total 1990		0.1	4.1	10.9	1.8
	2000	2001	0.4	4.0	12.2	1.6
2002		0.2	3.7	10.4	1.6	
2003		0.7	3.0	5.1	1.0	
2004		0.4	4.3	9.7	1.4	
2005		0.1	5.1	12.9	1.8	
2006		0.2	4.8	14.1	1.7	
2007		0.3	4.0	9.1	1.8	
2008		0.3	4.0	10.6	2.0	
2009		0.6	4.2	10.1	1.8	
2010		0.6	2.3	4.4	0.7	
Total 2000		0.1	4.2	14.1	1.8	
2010	2011					
	2012					
	2013	1.1	5.4	9.9	2.2	
	2014	0.1	3.4	9.9	1.8	
	2015	0.1	3.7	8.9	1.7	
	2016	0.1	3.0	10.5	1.9	
	2017	0.1	3.5	13.1	2.3	
Total 2010		0.1	3.5	13.1	2.0	
Total general		0.1	4.1	14.1	1.9	

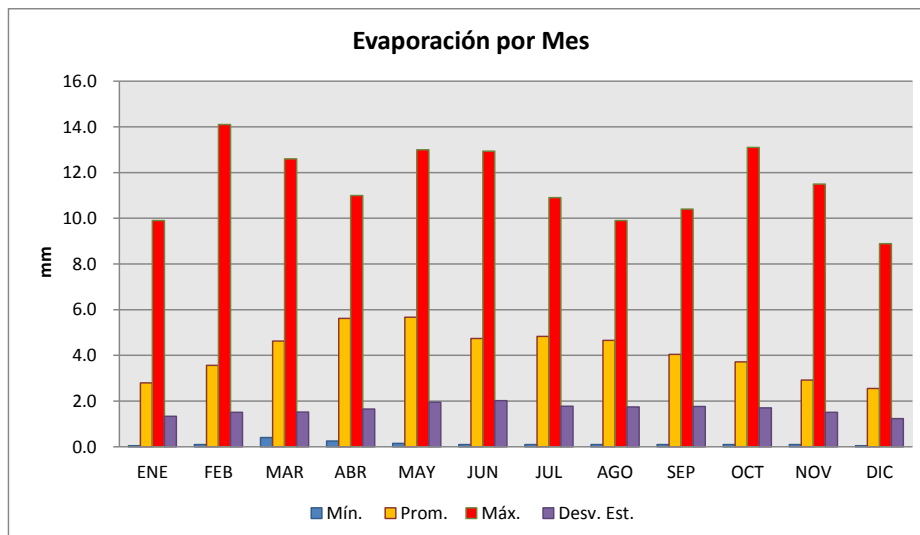
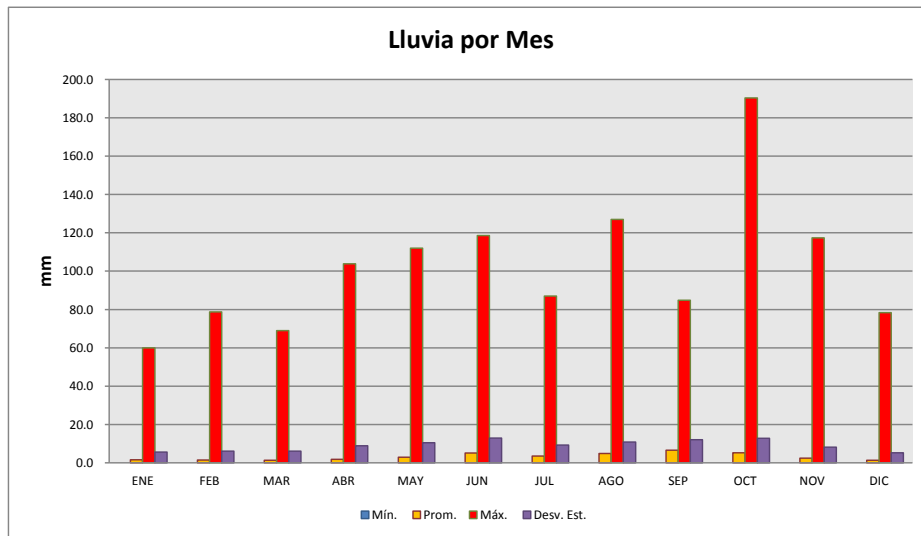


Estación	23012
NOMBRE	COBA
ESTADO	QUINTANA ROO

Estación	23012
NOMBRE	COBA
ESTADO	QUINTANA ROO

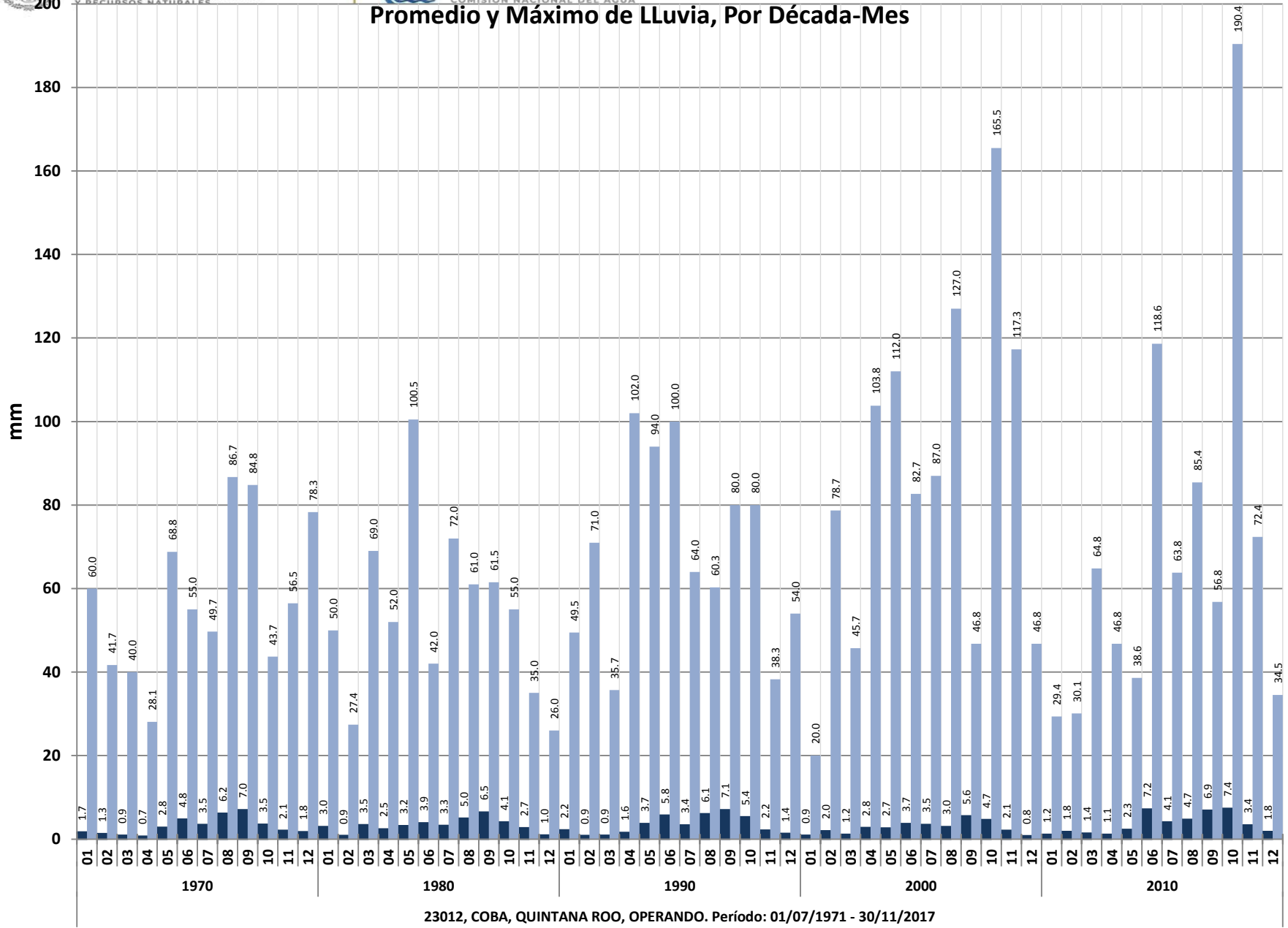
Lluvia (mm)					
Mes	Mín.	Prom.	Máx.	Desv. Est.	
ENE	0.0	1.6	60.0	5.6	
FEB	0.0	1.5	78.7	6.1	
MAR	0.0	1.3	69.0	6.1	
ABR	0.0	1.8	103.8	8.9	
MAY	0.0	3.0	112.0	10.5	
JUN	0.0	5.2	118.6	12.9	
JUL	0.0	3.6	87.0	9.2	
AGO	0.0	4.9	127.0	10.8	
SEP	0.0	6.6	84.8	12.1	
OCT	0.0	5.3	190.4	12.8	
NOV	0.0	2.5	117.3	8.2	
DIC	0.0	1.3	78.3	5.3	
Total general	0.0	3.2	190.4	9.6	

Evap (mm)					
Mes	Mín.	Prom.	Máx.	Desv. Est.	
ENE	0.1	2.8	9.9	1.3	
FEB	0.1	3.6	14.1	1.5	
MAR	0.4	4.6	12.6	1.5	
ABR	0.3	5.6	11.0	1.7	
MAY	0.2	5.7	13.0	2.0	
JUN	0.1	4.7	12.9	2.0	
JUL	0.1	4.8	10.9	1.8	
AGO	0.1	4.7	9.9	1.7	
SEP	0.1	4.0	10.4	1.8	
OCT	0.1	3.7	13.1	1.7	
NOV	0.1	2.9	11.5	1.5	
DIC	0.1	2.6	8.9	1.2	
Total general	0.1	4.1	14.1	1.9	

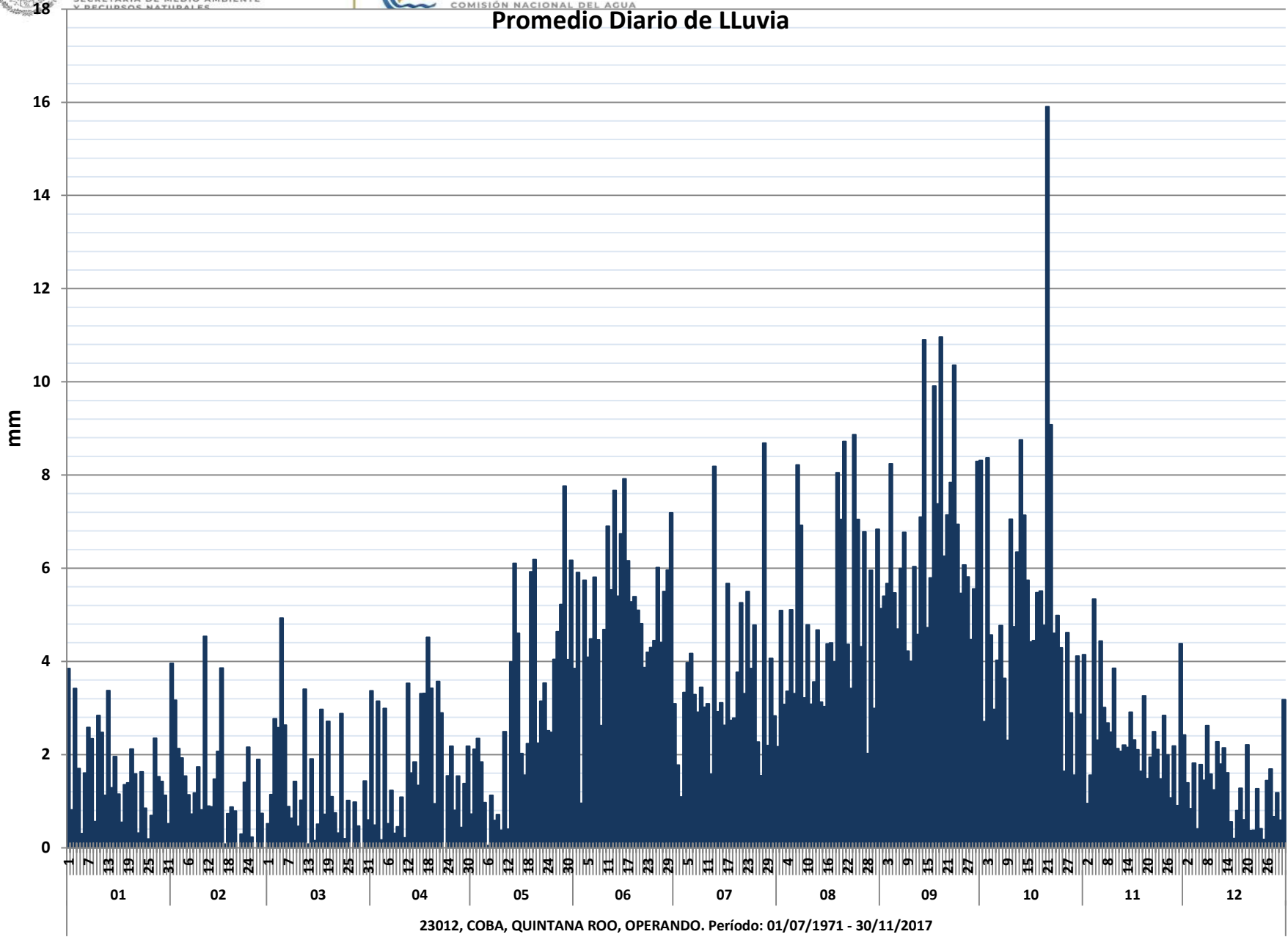


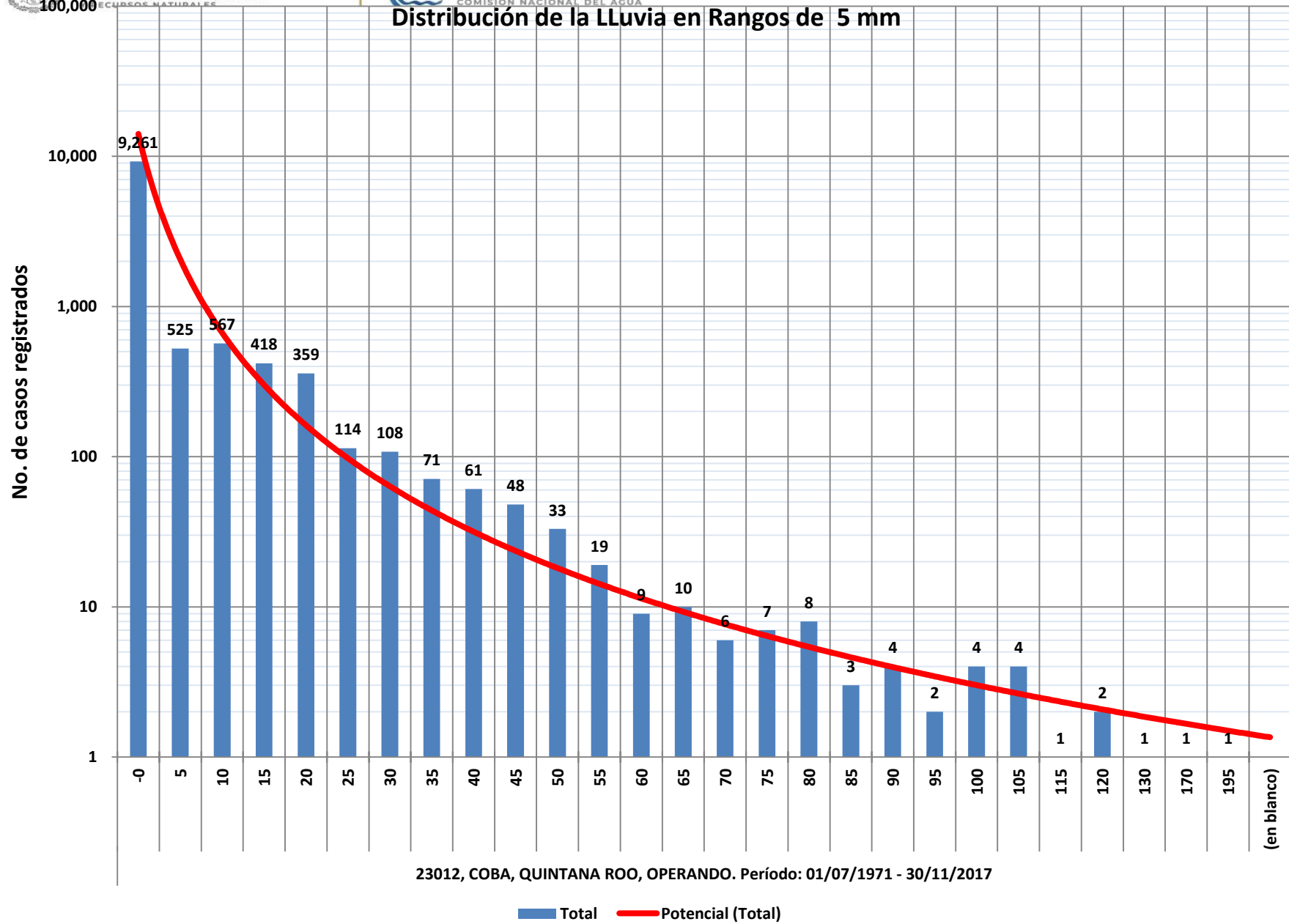


Promedio y Máximo de Lluvia, Por Década-Mes



23012, COBA, QUINTANA ROO, OPERANDO. Período: 01/07/1971 - 30/11/2017







Estacion 23012
NOMBRE COBA
ESTADO QUINTANA ROO

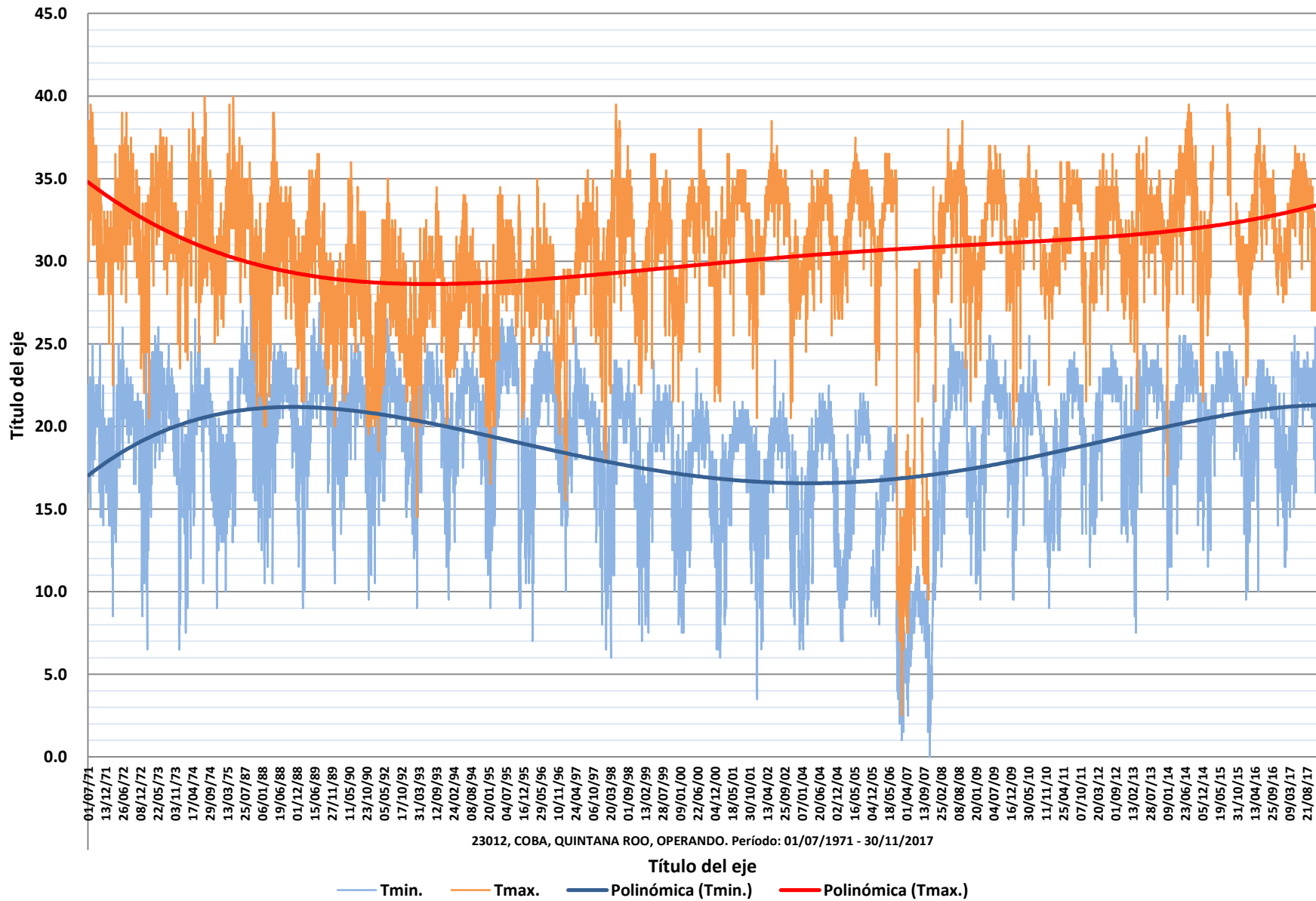
Década	Año	Temp Min (°C)				
		Mín.	Prom.	Máx.	Desv. Est.	
1970	1971	14.0	19.7	25.0	2.1	
	1972	8.5	19.4	26.0	2.9	
	1973	6.5	19.8	26.0	3.6	
	1974	7.5	18.9	26.5	3.2	
	1975	10.0	17.3	23.5	2.4	
	1978	13.0	16.0	19.0	1.6	
Total 1970		6.5	19.2	26.5	3.1	
1980	1987	12.5	21.6	29.5	2.6	
	1988	10.5	20.4	25.0	2.9	
	1989	9.0	20.8	27.5	3.2	
	1990	9.5	20.5	25.0	2.4	
Total 1980		9.0	20.7	29.5	2.9	
1990	1992	10.5	20.4	26.5	2.6	
	1993	9.0	20.2	25.0	2.9	
	1994	9.5	20.5	25.0	2.6	
	1995	9.0	20.5	26.5	4.5	
	1996	7.0	20.2	26.0	3.6	
	1997	8.0	19.5	26.0	2.9	
	1998	6.0	18.4	24.0	3.7	
	1999	7.0	17.5	24.0	3.6	
	2000	6.5	16.9	23.5	3.3	
	Total 1990		6.0	19.4	26.5	3.6
	2000	2001	6.0	16.9	21.5	3.6
2002		3.5	16.7	24.0	3.7	
2003		6.5	12.8	18.5	3.7	
2004		6.5	16.6	22.5	3.9	
2005		7.0	15.8	22.0	4.3	
2006		8.0	15.7	20.0	3.0	
2007		0.0	7.5	22.5	3.1	
2008		10.5	19.8	26.5	3.6	
2009		9.5	19.8	25.5	3.3	
2010		9.0	18.9	25.5	3.5	
Total 2000		0.0	16.4	26.5	5.0	
2010	2011	12.5	19.6	24.5	3.1	
	2012	11.5	20.2	25.0	3.1	
	2013	7.5	20.9	25.0	2.9	
	2014	9.5	20.8	25.5	3.2	
	2015	11.5	21.2	25.0	2.6	
	2016	9.5	19.8	24.0	2.9	
	2017	11.5	20.1	26.0	3.0	
Total 2010		7.5	20.4	26.0	3.0	
Total general		0.0	18.9	29.5	4.1	

Estacion 23012
NOMBRE COBA
ESTADO QUINTANA ROO

Década	Año	Temp Max (°C)				
		Mín.	Prom.	Máx.	Desv. Est.	
1970	1971	28.0	32.8	39.5	2.7	
	1972	22.5	32.3	39.0	2.5	
	1973	20.5	32.5	38.0	3.0	
	1974	24.0	31.8	40.0	2.8	
	1975	26.0	31.8	39.5	2.2	
	1978	30.0	35.7	40.0	2.7	
Total 1970		20.5	32.3	40.0	2.8	
1980	1987	21.0	31.3	37.5	2.9	
	1988	20.0	30.9	39.0	3.4	
	1989	20.0	29.8	36.5	3.4	
	1990	19.5	28.1	36.0	2.9	
Total 1980		19.5	30.0	39.0	3.4	
1990	1992	18.5	26.6	35.0	3.1	
	1993	14.5	27.0	34.5	3.1	
	1994	20.0	27.3	34.0	2.6	
	1995	16.5	27.6	34.5	3.8	
	1996	19.5	27.7	35.0	2.5	
	1997	15.5	29.3	35.5	3.6	
	1998	18.0	31.2	39.5	3.7	
	1999	21.5	30.5	36.5	3.1	
	2000	21.5	31.4	38.0	2.9	
	Total 1990		14.5	28.7	39.5	3.6
	2000	2001	21.5	31.7	36.5	2.8
2002		20.5	32.2	38.5	3.2	
2003		26.5	29.0	32.5	1.3	
2004		24.5	31.6	35.5	2.3	
2005		26.5	32.8	37.5	2.2	
2006		22.5	32.5	36.5	2.8	
2007		2.5	16.1	34.5	7.2	
2008		21.5	32.4	38.5	2.7	
2009		23.0	32.1	37.0	2.9	
2010		20.0	31.4	37.0	2.9	
Total 2000		2.5	30.4	38.5	5.9	
2010	2011	21.5	32.0	36.0	2.4	
	2012	22.5	31.7	36.5	2.4	
	2013	21.0	32.2	37.5	2.3	
	2014	17.0	33.1	39.5	3.3	
	2015	25.5	32.2	39.5	3.1	
	2016	22.5	32.3	38.0	2.8	
	2017	27.0	32.7	37.0	2.3	
Total 2010		17.0	32.3	39.5	2.7	
Total general		2.5	30.5	40.0	4.4	



Registro Diario de Temperaturas Mínima y Máxima



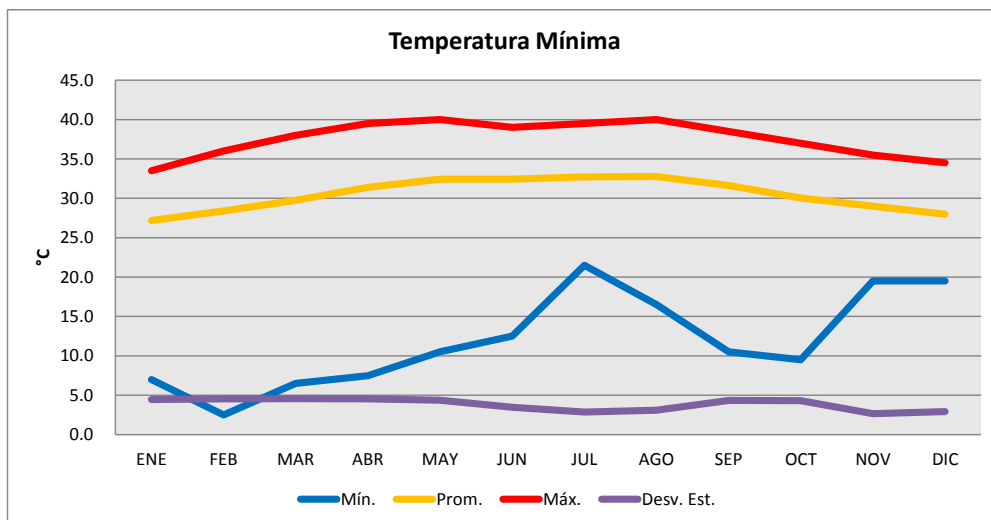
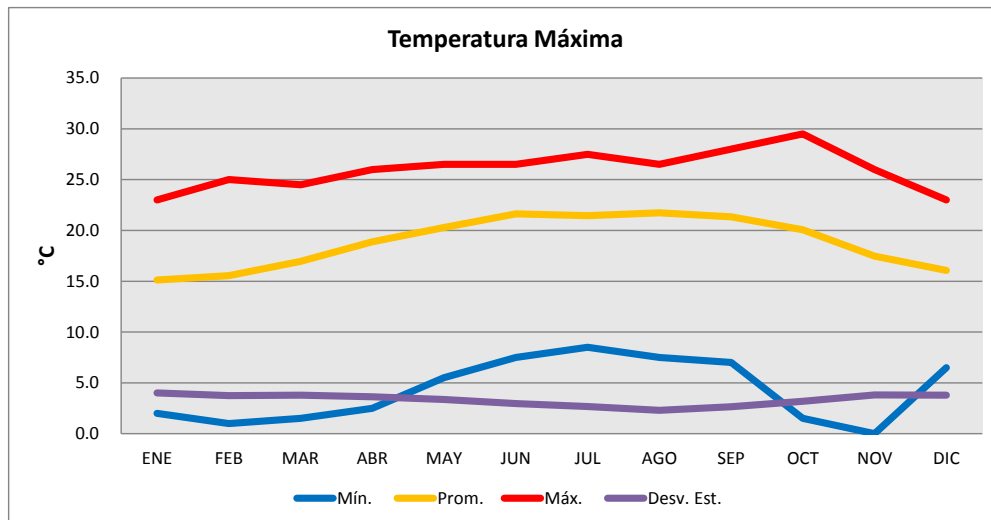


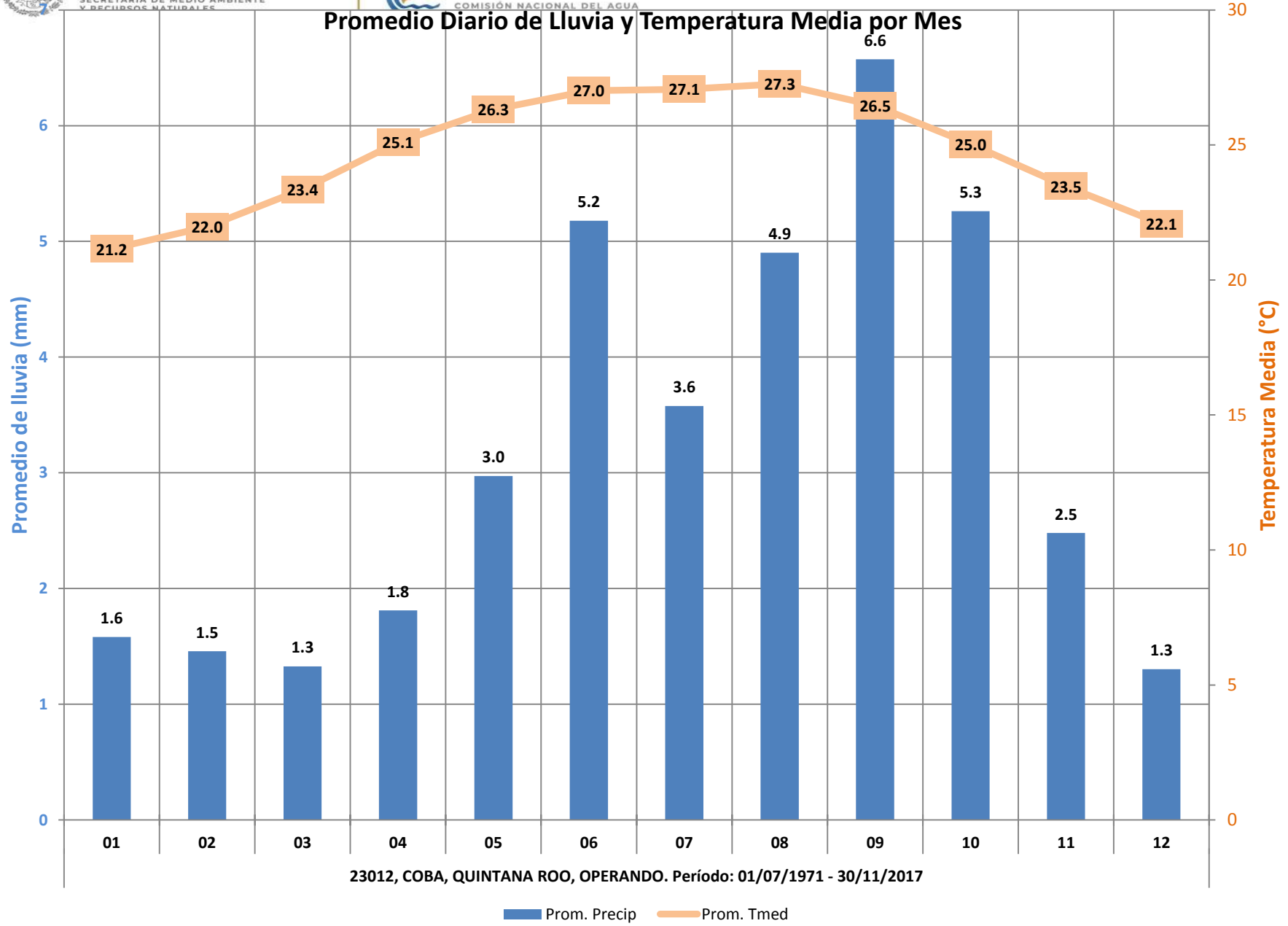
Estacion	23012
NOMBRE	COBA
ESTADO	QUINTANA ROO

Estacion	23012
NOMBRE	COBA
ESTADO	QUINTANA ROO

Mes	Temp Min (°C)			
	Mín.	Prom.	Máx.	Desv. Est.
ENE	2.0	15.1	23.0	4.0
FEB	1.0	15.6	25.0	3.7
MAR	1.5	16.9	24.5	3.8
ABR	2.5	18.9	26.0	3.6
MAY	5.5	20.3	26.5	3.4
JUN	7.5	21.6	26.5	3.0
JUL	8.5	21.5	27.5	2.7
AGO	7.5	21.7	26.5	2.3
SEP	7.0	21.3	28.0	2.6
OCT	1.5	20.1	29.5	3.2
NOV	0.0	17.5	26.0	3.8
DIC	6.5	16.1	23.0	3.8
Total general	0.0	18.9	29.5	4.1

Mes	Temp Max (°C)			
	Mín.	Prom.	Máx.	Desv. Est.
ENE	7.0	27.2	33.5	4.5
FEB	2.5	28.4	36.0	4.6
MAR	6.5	29.8	38.0	4.6
ABR	7.5	31.4	39.5	4.5
MAY	10.5	32.4	40.0	4.4
JUN	12.5	32.4	39.0	3.5
JUL	21.5	32.7	39.5	2.9
AGO	16.5	32.8	40.0	3.1
SEP	10.5	31.6	38.5	4.3
OCT	9.5	30.0	37.0	4.3
NOV	19.5	29.0	35.5	2.7
DIC	19.5	28.0	34.5	2.9
Total general	2.5	30.5	40.0	4.4



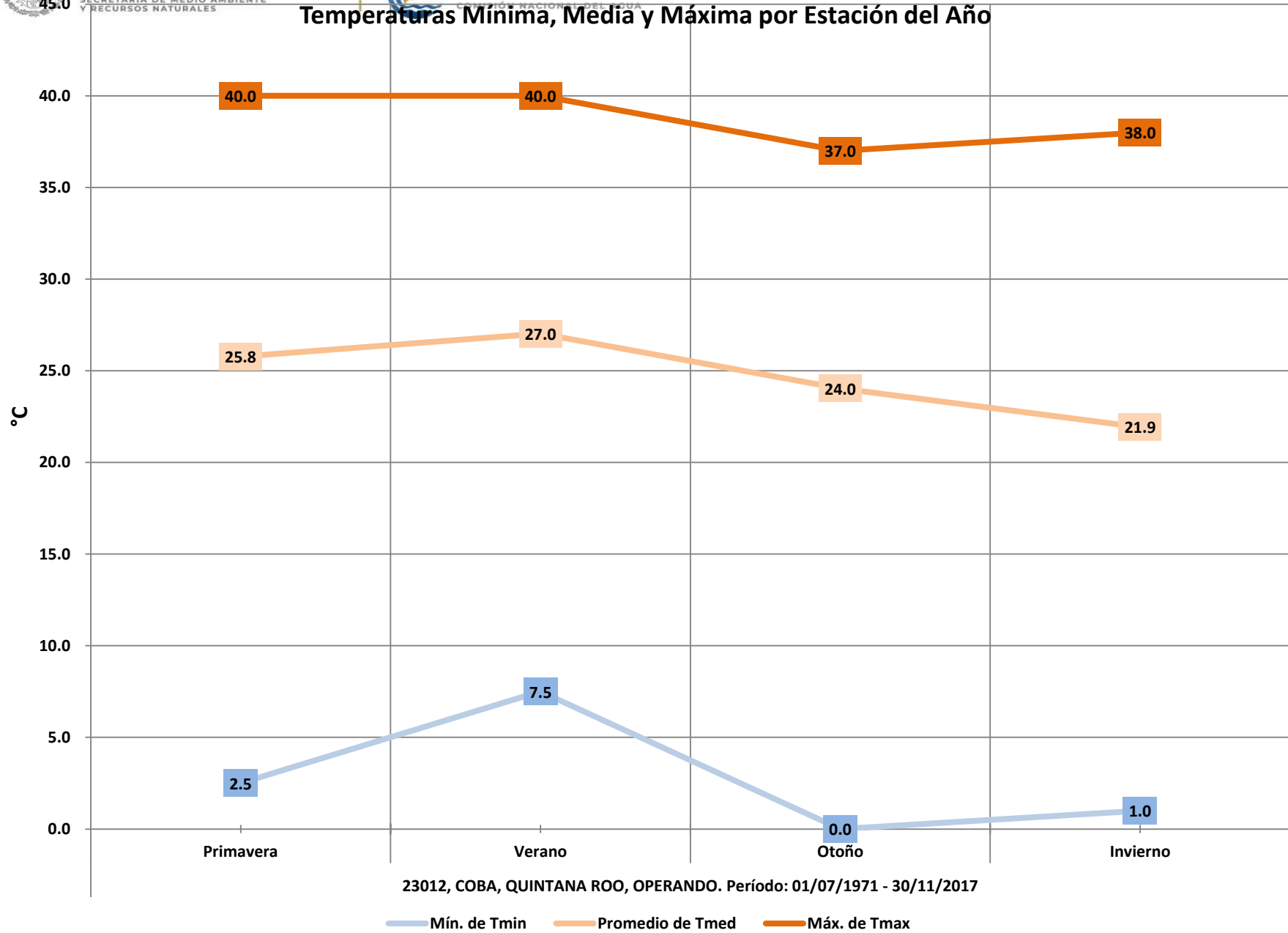


Estacion 23012
 NOMBRE COBA
 ESTADO QUINTANA ROO

Década	Año	Promedios												
		Primavera		Verano			Otoño			Invierno				
		Lluvia (mm)	T min (°C)	T max (°C)	Lluvia (mm)	T min (°C)	T max (°C)	Lluvia (mm)	T min (°C)	T max (°C)	Lluvia (mm)	T min (°C)	T max (°C)	
1970	1971				4.8	20.4	35.0	3.9	19.3	31.1	0.0	18.7	31.3	
	1972	4.0	20.5	32.7	4.3	21.4	34.0	3.0	20.0	32.0	2.3	16.1	30.5	
	1973	0.9	21.6	34.4	6.3	21.9	34.2	2.6	18.9	31.0	0.7	16.7	30.3	
	1974	2.8	20.1	34.0	6.3	21.4	32.2	2.1	17.8	30.2	2.1	16.4	30.6	
	1975	0.1	18.9	33.6								1.6	16.5	30.9
	1978	0.9	16.0	35.7										
Total 1970		2.0	20.0	34.0	5.4	21.3	33.8	2.9	19.0	31.1	1.6	16.5	30.6	
1980	1987	3.1	22.3	32.5	4.6	23.2	33.1	2.6	20.0	29.4	0.0	19.6	29.3	
	1988	4.1	20.7	33.2	5.5	22.9	32.4	3.9	19.9	29.6	2.1	17.9	28.4	
	1989	2.2	21.0	32.2	3.1	23.3	31.4	4.9	20.7	27.5	0.9	16.6	27.0	
	1990	2.5	20.8	29.4	4.4	22.4	29.1	3.3	19.3	26.4	3.2	19.0	27.1	
Total 1980	2.9	21.0	31.7	4.4	22.9	31.5	3.7	20.0	28.4	2.1	18.1	27.6		
1990	1992	4.0	20.9	28.1	4.2	22.3	28.4	2.5	20.2	26.2	0.5	17.9	23.8	
	1993	7.6	20.9	27.1	3.6	22.3	29.2	2.1	20.4	27.9	2.2	17.3	23.9	
	1994	2.2	21.4	29.1	4.1	22.7	28.5	2.9	20.5	26.1	2.4	17.6	25.4	
	1995	1.0	22.7	29.3	5.0	24.2	30.1	6.3	18.5	27.7	1.1	16.5	23.3	
	1996	2.8	21.8	28.8	4.4	23.0	28.8	2.6	19.8	24.9	0.7	16.4	28.2	
	1997	3.5	21.5	29.5	6.6	20.9	32.4	3.8	18.3	29.7	1.7	17.2	25.7	
	1998	0.8	19.3	34.0	7.1	21.2	33.1	6.1	18.3	29.5	1.9	14.7	28.0	
	1999	3.5	19.0	33.0	6.8	20.6	32.5	3.6	17.0	28.5	1.6	13.5	28.0	
	2000	3.7	18.1	33.0	5.9	19.7	33.7	2.2	16.1	30.1	0.4	13.6	28.8	
	Total 1990	3.2	20.6	30.2	5.3	21.9	30.7	3.6	18.8	27.8	1.4	16.1	26.1	
2000	2001	5.4	17.5	32.9	2.8	19.9	34.2	3.8	17.5	30.0	0.8	12.8	29.8	
	2002	1.8	17.5	34.2	1.5	19.8	34.4	3.8	16.9	30.7	2.0	12.7	29.5	
	2003							2.4	13.8	29.1	0.0	8.0	28.6	
	2004	4.4	17.2	32.3	3.2	20.2	33.9	2.9	16.5	30.4	0.9	12.3	29.7	
	2005	2.2	16.4	34.3	7.3	20.3	34.0	6.7	15.5	33.2	0.1	11.0	30.1	
	2006	1.1	17.1	34.3	5.6	17.7	34.1				0.9	13.0	29.6	
	2007	1.9	7.0	14.1	3.4	9.6	22.9	2.6	7.3	15.5	2.2	6.6	12.7	
	2008	1.4	20.9	33.7	2.1	23.2	34.6	2.4	18.9	30.5	2.3	16.2	30.7	
	2009	0.8	21.2	33.5	2.9	22.1	34.4	3.5	20.2	31.6	1.7	15.7	28.8	
	2010	4.5	21.0	33.5	5.9	21.6	33.5	1.8	16.2	29.1	0.9	16.7	29.5	
Total 2000	2.6	17.3	31.4	3.7	19.7	33.0	3.2	16.0	29.4	1.3	12.9	27.8		
2010	2011	1.9	19.5	32.7	6.7	22.7	34.0	6.1	19.3	30.8	2.3	16.5	30.1	
	2012	4.5	21.5	33.2	4.3	22.8	33.5	2.3	19.2	30.7	1.2	17.1	29.5	
	2013	2.4	21.6	33.5	12.3	22.8	32.7	6.7	21.4	32.4	1.8	17.6	30.1	
	2014	1.8	21.9	34.3	3.2	23.4	36.3	7.1	19.7	31.0	2.5	18.1	30.8	
	2015	4.0	22.1		1.6	23.3	37.0	6.4	21.2	30.7	0.6	18.4	31.4	
	2016	3.0	20.8	34.4	3.6	22.0	34.0	1.3	19.5	31.4	1.3	16.7	29.3	
	2017	3.0	20.6	34.3	5.5	22.5	34.0	3.3	20.4	31.2	1.0	16.7	30.4	
Total 2010	2.9	21.1	33.7	5.3	22.8	34.3	4.8	20.1	31.2	1.5	17.3	30.2		
Total general	2.8	19.8	31.8	4.8	21.6	32.5	3.7	18.5	29.4	1.5	15.7	28.2		



Temperaturas Mínima, Media y Máxima por Estación del Año





Lluvia Promedio y Máxima, por Estación del Año

