



Datos de la Estación

ESTACIÓN:	2038
NOMBRE:	PRESA RODRIGUEZ
ESTADO:	BAJA CALIFORNIA
MUNICIPIO:	TIJUANA
LATITUD (°):	32.4469
LONGITUD (°):	-116.9078
ALTURA (msn):	120
SITUACIÓN:	OPERANDO
DATOS DESDE:	1 de enero de 1929
HASTA:	31 de diciembre de 2012

Inventario de Registros por Década Año

Estacion		N° de Casos					
Decada	Año	Lluvia	Temp min	Temp max	Temp amb	Evaporación	
1920	1929	362	359	358	359	354	
	1930	207	208	205	206	203	
Total 1920		569	567	563	565	557	
1930	1932	31	31	31	31		
	1933	343	342	337	342	248	
	1934	365	365	365	365	354	
	1935	365	365	365	365	350	
	1936	305	305	304	305	293	
	1939	365	365	364	365	353	
	1940	365	366	366	366	352	
Total 1930		2,139	2,139	2,132	2,139	1,950	
1940	1941	362	311	311	311	318	
	1942	365	365	365	365	360	
	1943	365	365	364	365	354	
	1944	366	366	366	366	352	
	1945	365	365	365	365	349	
	1946	365	365	365	365	354	
	1947	365	365	365	365	365	
	1948	366	366	366	366	365	
	1949	273	257	257	257	273	
	1950	365	365	365	365	361	
Total 1940		3,557	3,490	3,489	3,490	3,451	
1950	1951	365	365	365	365	363	
	1952	366	366	366	366	364	
	1953	365	365	365	365	365	
	1954	365	365	365	365	364	
	1955	365	365	365	365	361	
	1956	365	365	365	365	364	
	1957	365	365	365	365	362	
	1958	365	365	365	352	363	
	1959	363	364	363	364	364	
	1960	366	366	366	366	364	
Total 1950		3,650	3,651	3,650	3,638	3,634	
1960	1961	365	365	365	365	360	
	1962	365	365	365	365	364	
	1963	365	362	362	362	364	
	1964	364	364	364	364	362	
	1965	365	365	365	365	359	
	1966	365	365	365	365	365	
	1967	365	365	365	365	365	
	1968	366	366	366	366	366	
	1969	365	365	365	365	363	
	1970	365	365	365	365	364	
Total 1960		3,650	3,647	3,647	3,647	3,632	
1970	1971	365	365	365	365	365	
	1972	366	366	366	366	366	
	1973	365	365	365	365	364	
	1974	365	365	365	365	362	
	1975	365	365	365	365	365	
	1976	366	366	366	366	366	
	1977	365	365	365	365	365	
	1978	365	365	365	365	364	



Datos de la Estación

ESTACIÓN:	2038
NOMBRE:	PRESA RODRIGUEZ
ESTADO:	BAJA CALIFORNIA
MUNICIPIO:	TIJUANA

Inventario de Registros por Década Año

Estacion		2038				
N°de Casos						
Decada	Año	Lluvia	Temp min	Temp max	Temp amb	Evaporación
1970	1979	365	365	365	365	362
	1980	366	366	366	366	365
Total 1970		3,653	3,653	3,653	3,653	3,644
1980	1981	365	365	365	365	365
	1982	365	365	365	365	365
	1983	365	365	365	365	356
	1984	366	366	366	366	364
	1985	365	365	365	365	360
	1986	334	334	334	334	334
	1987	342	342	342	342	331
	1988	366	366	361	366	365
	1989	365	365	365	365	365
	1990	365	363	359	364	356
Total 1980		3,598	3,596	3,587	3,597	3,561
1990	1991	364	365	364	364	351
	1992	366	366	366	365	358
	1993	364	365	362	365	326
	1994	362	357	357	357	347
	1995	364	365	365	361	331
	1996	365	366	366	366	357
	1997	365	365	365	365	353
	1998	365	365	365	365	351
	1999	365	364	365	365	241
	2000	366	366	366	366	365
Total 1990		3,646	3,644	3,641	3,639	3,380
2000	2001	365	365	365	365	360
	2002	365	365	365	365	362
	2003	365	365	364	365	359
	2004	366	366	366	366	351
	2005	365	365	364	365	358
	2006	365	365	364	365	362
	2007	365	365	365	365	362
	2008	366	366	366	366	359
	2009	365	365	365	365	363
	2010	365	365	365	365	356
Total 2000		3,652	3,652	3,649	3,652	3,592
2010	2011	364	365	364	365	359
	2012	365	366	366	366	357
Total 2010		729	731	730	731	716
Total general		28,843	28,770	28,741	28,751	28,117

Estacion	2038
NOMBRE	PRESA RODRIGUEZ
ESTADO	BAJA CALIFORNIA

Década	Año	Lluvia (mm)			
		Mín.	Prom.	Máx.	Desv. Est.
1920	1929	0.0	0.3	16.2	1.7
	1930	0.0	0.2	30.0	2.1
Total 1920		0.0	0.3	30.0	1.9
1930	1932	0.0	2.6	30.5	7.3
	1933	0.0	0.5	40.0	3.2
	1934	0.0	0.1	16.5	0.9
	1935	0.0	0.1	6.7	0.6
	1936	0.0	0.1	5.9	0.5
	1939	0.0	0.1	3.7	0.4
	1940	0.0	0.1	10.2	0.6
	Total 1930		0.0	0.2	40.0
1940	1941	0.0	0.3	12.0	1.3
	1942	0.0	0.4	25.0	2.2
	1943	0.0	0.9	44.0	4.3
	1944	0.0	0.9	50.0	4.3
	1945	0.0	0.7	42.0	3.7
	1946	0.0	0.4	19.0	2.0
	1947	0.0	0.2	17.0	1.5
	1948	0.0	0.3	21.0	2.2
	1949	0.0	0.3	8.0	1.1
	1950	0.0	0.3	14.0	1.6
Total 1940		0.0	0.5	50.0	2.7
1950	1951	0.0	0.6	19.0	2.4
	1952	0.0	1.0	32.0	4.2
	1953	0.0	0.2	15.5	1.4
	1954	0.0	0.6	47.0	3.5
	1955	0.0	0.4	30.0	2.2
	1956	0.0	0.2	9.8	1.1
	1957	0.0	0.7	41.0	3.3
	1958	0.0	0.6	24.4	2.6
	1959	0.0	0.4	22.0	2.0
	1960	0.0	0.4	19.5	2.1
Total 1950		0.0	0.5	47.0	2.6
1960	1961	0.0	0.3	17.4	1.6
	1962	0.0	0.5	27.0	2.5
	1963	0.0	0.5	32.1	3.0
	1964	0.0	0.4	23.6	1.9
	1965	0.0	1.1	53.5	4.7
	1966	0.0	0.4	29.2	2.3
	1967	0.0	0.9	76.3	5.6
	1968	0.0	0.3	22.8	1.7
	1969	0.0	0.6	20.3	2.3
	1970	0.0	0.5	40.5	3.0
Total 1960		0.0	0.5	76.3	3.1
1970	1971	0.0	0.3	10.2	1.3
	1972	0.0	0.4	20.0	2.1
	1973	0.0	0.7	28.2	3.0
	1974	0.0	0.5	30.0	2.7
	1975	0.0	0.5	17.5	2.2
	1976	0.0	1.0	48.9	4.8
	1977	0.0	0.8	49.2	4.4
	1978	0.0	1.3	40.0	4.4
	1979	0.0	0.6	18.9	2.2
	1980	0.0	1.0	63.2	4.7
Total 1970		0.0	0.7	63.2	3.4
1980	1981	0.0	0.5	23.2	2.5
	1982	0.0	0.8	31.1	3.6
	1983	0.0	1.2	65.8	5.1
	1984	0.0	0.6	33.4	3.1
	1985	0.0	0.6	42.0	3.4
	1986	0.0	0.7	30.9	3.2
	1987	0.0	1.1	51.0	4.6
	1988	0.0	0.6	30.0	3.2
	1989	0.0	0.2	23.3	1.3
	1990	0.0	0.5	16.4	2.0

Estacion	2038
NOMBRE	PRESA RODRIGUEZ
ESTADO	BAJA CALIFORNIA

Década	Año	Evap (mm)			
		Mín.	Prom.	Máx.	Desv. Est.
1920	1929	0.2	5.5	17.0	2.9
	1930	1.0	5.4	13.0	2.6
Total 1920		0.2	5.5	17.0	2.8
1930	1932	1.0	5.1	13.0	2.5
	1933	1.0	5.3	15.0	2.7
	1934	1.0	4.7	15.0	2.5
	1935	1.0	5.1	16.0	2.8
	1936	1.0	4.7	18.0	2.7
	1939	1.0	4.7	18.0	2.7
	1940	1.0	4.7	18.0	2.7
	Total 1930		1.0	4.9	18.0
1940	1941	1.0	4.3	15.0	2.4
	1942	1.0	4.8	14.0	2.4
	1943	1.0	4.6	16.0	2.3
	1944	1.0	4.4	12.0	2.1
	1945	1.0	4.8	17.0	2.6
	1946	0.4	4.9	15.0	3.2
	1947	0.6	4.5	12.5	2.0
	1948	0.2	4.3	12.6	2.2
	1949	0.3	5.0	12.5	2.6
	1950	0.1	4.9	12.0	2.3
Total 1940		0.1	4.7	17.0	2.4
1950	1951	0.2	5.5	16.8	2.9
	1952	0.1	5.1	13.9	2.7
	1953	0.1	6.1	14.4	2.7
	1954	0.1	5.6	15.9	2.6
	1955	0.2	5.5	16.5	2.8
	1956	0.1	5.9	17.4	2.9
	1957	0.2	5.2	17.0	3.0
	1958	0.1	5.6	14.1	2.6
	1959	0.1	6.1	17.4	3.1
	1960	0.1	5.8	16.7	3.0
Total 1950		0.1	5.6	17.4	2.8
1960	1961	0.1	6.0	17.2	2.7
	1962	0.1	5.4	14.2	2.6
	1963	0.1	6.1	16.5	2.8
	1964	0.1	5.1	13.4	2.4
	1965	0.1	4.3	13.9	2.4
	1966	0.0	4.3	9.9	2.2
	1967	0.0	4.5	15.7	2.5
	1968	0.0	4.6	13.4	2.4
	1969	0.1	4.3	12.4	2.3
	1970	0.0	4.8	17.5	2.7
Total 1960		0.0	4.9	17.5	2.6
1970	1971	0.1	4.5	12.1	2.5
	1972	0.2	4.5	12.6	2.4
	1973	0.1	4.1	13.5	2.2
	1974	0.1	4.6	12.2	2.2
	1975	0.3	4.2	13.0	2.1
	1976	0.1	4.6	13.4	2.3
	1977	0.3	4.5	12.8	2.0
	1978	0.1	4.3	11.8	2.6
	1979	0.1	4.5	13.1	2.4
	1980	0.1	4.6	12.3	2.3
Total 1970		0.1	4.4	13.5	2.3
1980	1981	0.0	4.3	16.8	2.4
	1982	0.1	4.0	13.6	2.3
	1983	0.1	4.1	11.4	2.3
	1984	0.2	4.4	15.9	2.3
	1985	0.1	4.3	12.6	2.4
	1986	0.3	4.0	8.7	1.9
	1987	0.1	3.9	11.6	2.3
	1988	0.2	4.3	10.7	2.1
	1989	0.1	4.2	10.8	1.9
	1990	0.1	4.2	13.4	2.3

Estacion	2038
NOMBRE	PRESA RODRIGUEZ
ESTADO	BAJA CALIFORNIA

Década	Año	Lluvia (mm)			
		Mín.	Prom.	Máx.	Desv. Est.
Total 1980		0.0	0.7	65.8	3.4
1990	1991	0.0	0.9	68.5	4.9
	1992	0.0	0.9	36.0	4.1
	1993	0.0	1.3	86.9	6.4
	1994	0.0	0.6	22.4	2.4
	1995	0.0	1.0	61.8	5.5
	1996	0.0	0.4	21.8	2.1
	1997	0.0	0.6	41.5	3.6
	1998	0.0	1.4	53.8	5.4
	1999	0.0	0.4	20.0	2.0
	2000	0.0	0.4	31.8	2.5
Total 1990		0.0	0.8	86.9	4.2
2000	2001	0.0	0.8	37.6	3.7
	2002	0.0	0.3	16.8	1.4
	2003	0.0	0.6	36.5	3.5
	2004	0.0	1.2	90.0	7.3
	2005	0.0	0.6	29.6	2.9
	2006	0.0	0.4	17.3	2.1
	2007	0.0	0.4	24.0	2.2
	2008	0.0	1.0	87.0	5.9
	2009	0.0	0.5	59.4	3.8
	2010	0.0	1.2	52.1	5.1
Total 2000		0.0	0.7	90.0	4.2
2010	2011	0.0	0.8	56.0	4.6
	2012	0.0	0.5	21.4	2.2
Total 2010		0.0	0.6	56.0	3.6
Total general		0.0	0.6	90.0	3.3

Estacion	2038
NOMBRE	PRESA RODRIGUEZ
ESTADO	BAJA CALIFORNIA

Década	Año	Evap (mm)			
		Mín.	Prom.	Máx.	Desv. Est.
Total 1980		0.0	4.2	16.8	2.2
1990	1991	0.1	3.8	11.4	1.8
	1992	0.1	4.0	16.4	2.2
	1993	0.1	4.3	13.1	2.1
	1994	0.1	4.3	10.2	2.1
	1995	0.2	4.3	10.1	2.1
	1996	0.4	4.7	12.5	2.3
	1997	0.2	4.7	14.3	2.3
	1998	0.1	3.7	9.4	2.0
	1999	0.1	3.9	9.5	1.9
	2000	0.0	4.1	9.9	2.2
Total 1990		0.0	4.2	16.4	2.1
2000	2001	0.0	3.8	11.2	2.0
	2002	0.1	4.1	12.5	2.1
	2003	0.2	3.8	17.5	2.0
	2004	0.2	4.0	12.1	2.2
	2005	0.1	3.9	9.1	2.1
	2006	0.1	4.2	11.0	2.1
	2007	0.1	4.4	13.1	2.3
	2008	0.1	4.5	11.7	2.3
	2009	0.1	4.3	14.1	2.2
	2010	0.2	4.1	14.8	2.2
Total 2000		0.0	4.1	17.5	2.2
2010	2011	0.2	4.4	11.6	2.1
	2012	0.1	4.4	10.1	2.2
Total 2010		0.1	4.4	11.6	2.2
Total general		0.0	4.6	18.0	2.5

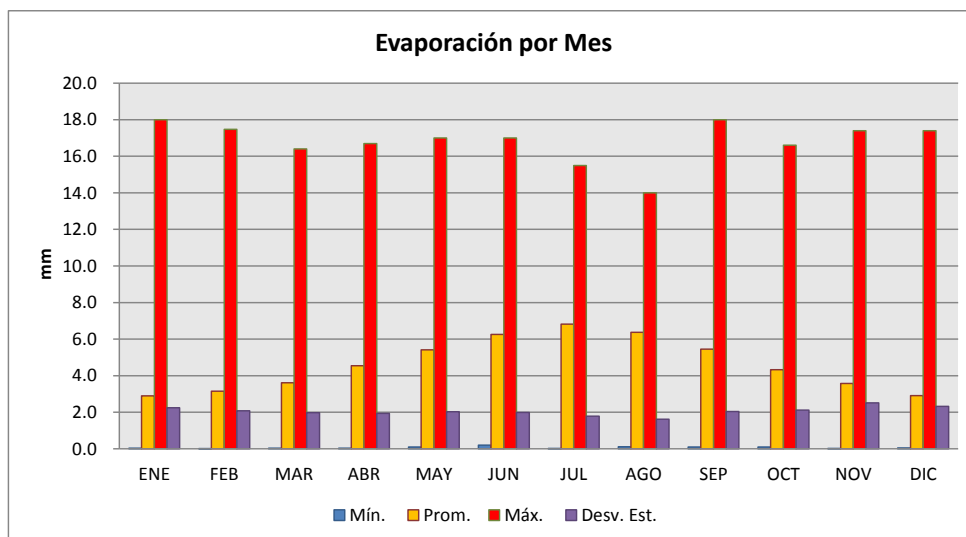
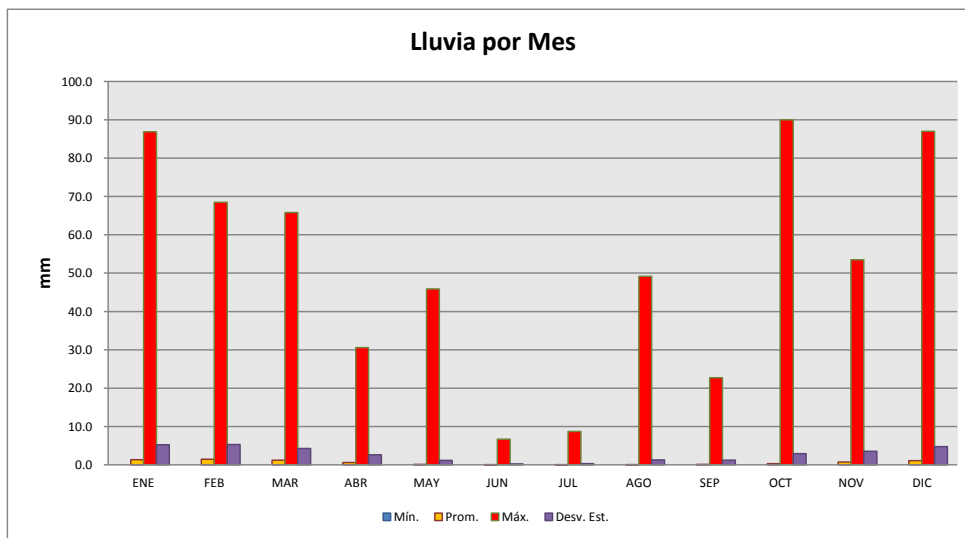


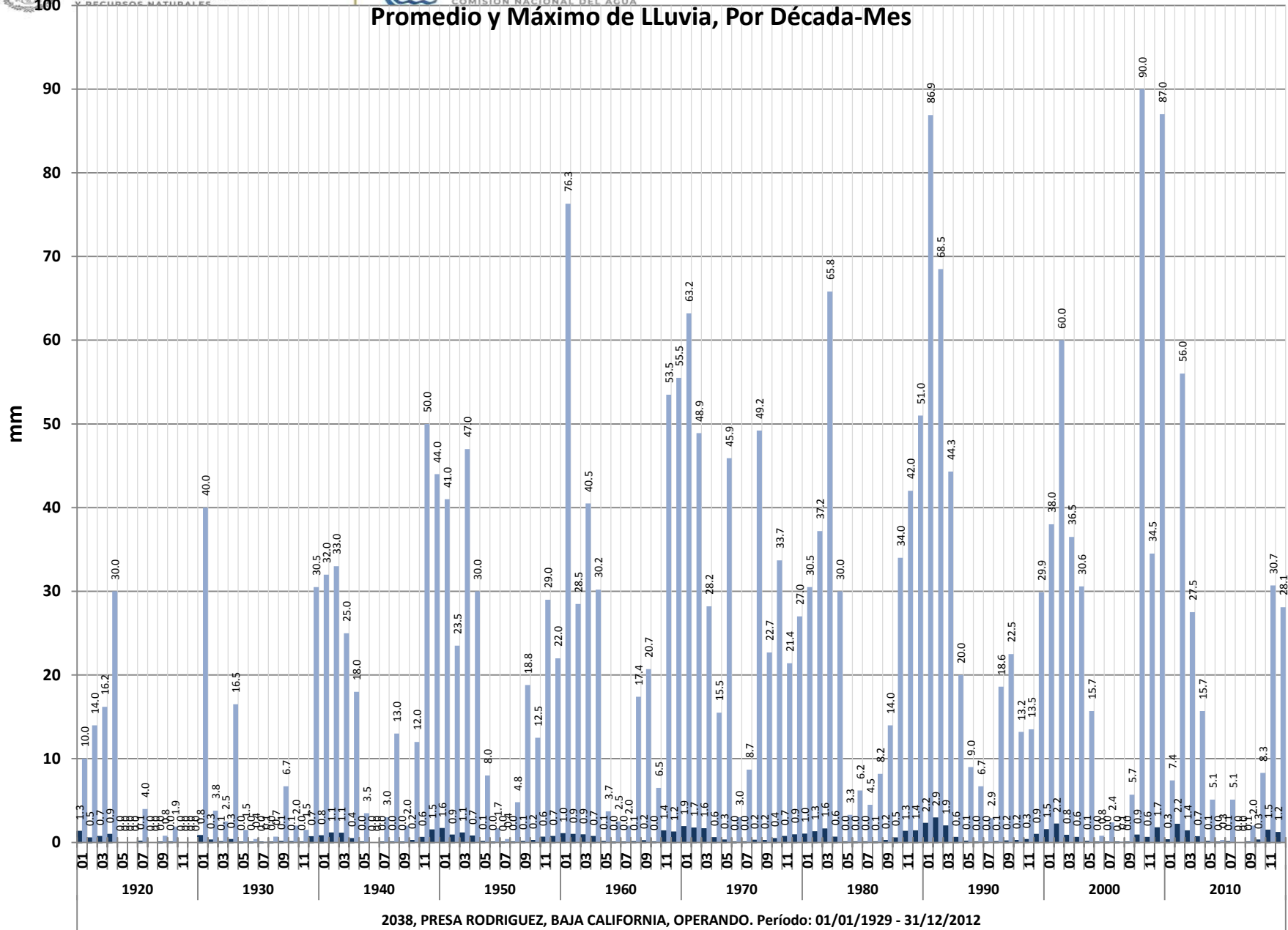
Estación	2038
NOMBRE	PRESA RODRIGUEZ
ESTADO	BAJA CALIFORNIA

Estación	2038
NOMBRE	PRESA RODRIGUEZ
ESTADO	BAJA CALIFORNIA

Lluvia (mm)					
Mes	Mín.	Prom.	Máx.	Desv. Est.	
ENE	0.0	1.4	86.9	5.2	
FEB	0.0	1.5	68.5	5.3	
MAR	0.0	1.2	65.8	4.3	
ABR	0.0	0.6	30.6	2.6	
MAY	0.0	0.1	45.9	1.1	
JUN	0.0	0.0	6.7	0.2	
JUL	0.0	0.0	8.7	0.3	
AGO	0.0	0.1	49.2	1.3	
SEP	0.0	0.1	22.7	1.2	
OCT	0.0	0.3	90.0	2.9	
NOV	0.0	0.7	53.5	3.6	
DIC	0.0	1.1	87.0	4.8	
Total general	0.0	0.6	90.0	3.3	

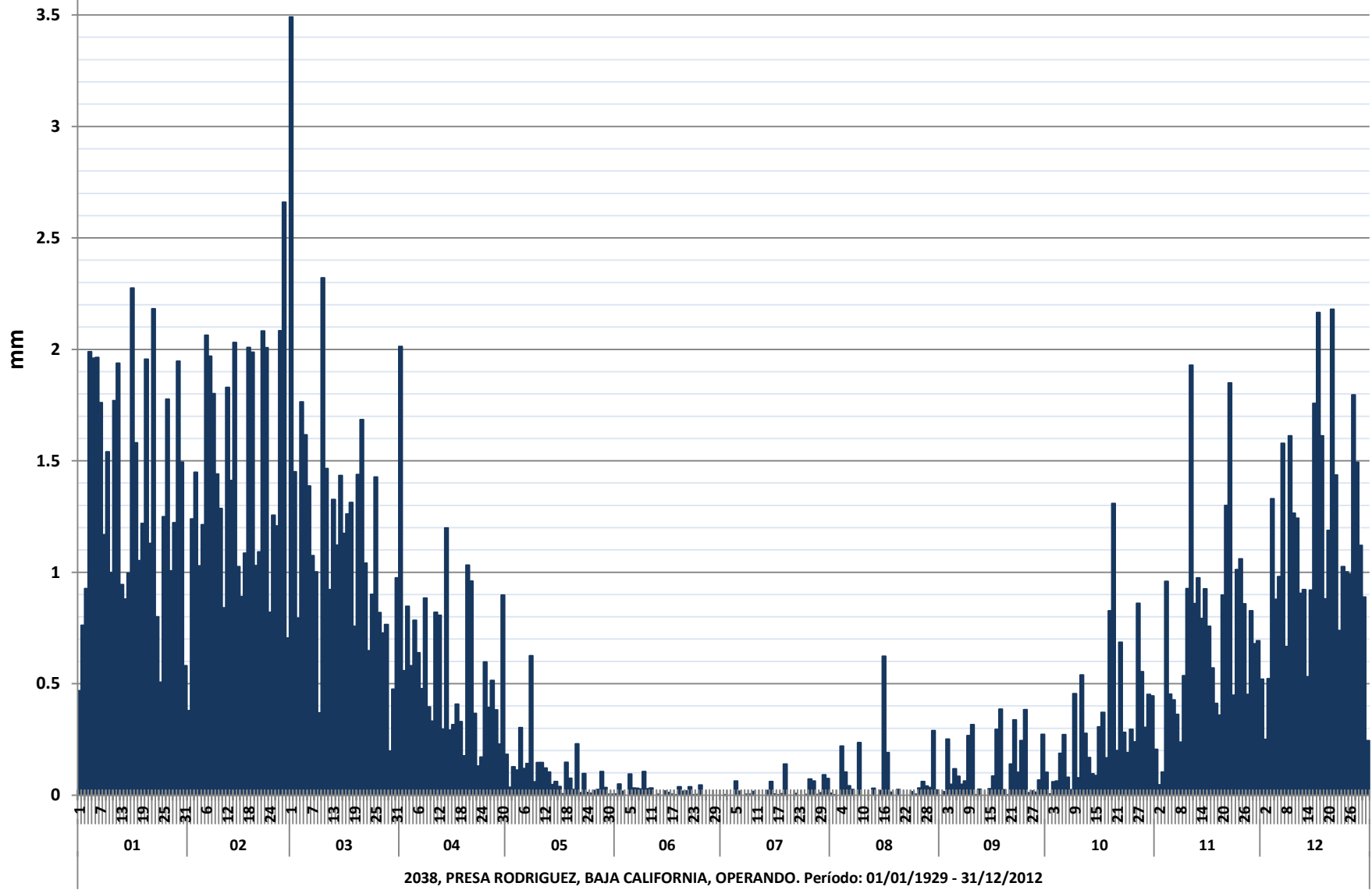
Evap (mm)					
Mes	Mín.	Prom.	Máx.	Desv. Est.	
ENE	0.0	2.9	18.0	2.2	
FEB	0.0	3.1	17.5	2.1	
MAR	0.0	3.6	16.4	2.0	
ABR	0.0	4.5	16.7	1.9	
MAY	0.1	5.4	17.0	2.0	
JUN	0.2	6.3	17.0	2.0	
JUL	0.0	6.8	15.5	1.8	
AGO	0.1	6.4	14.0	1.6	
SEP	0.1	5.5	18.0	2.0	
OCT	0.1	4.3	16.6	2.1	
NOV	0.0	3.6	17.4	2.5	
DIC	0.1	2.9	17.4	2.3	
Total general	0.0	4.6	18.0	2.5	

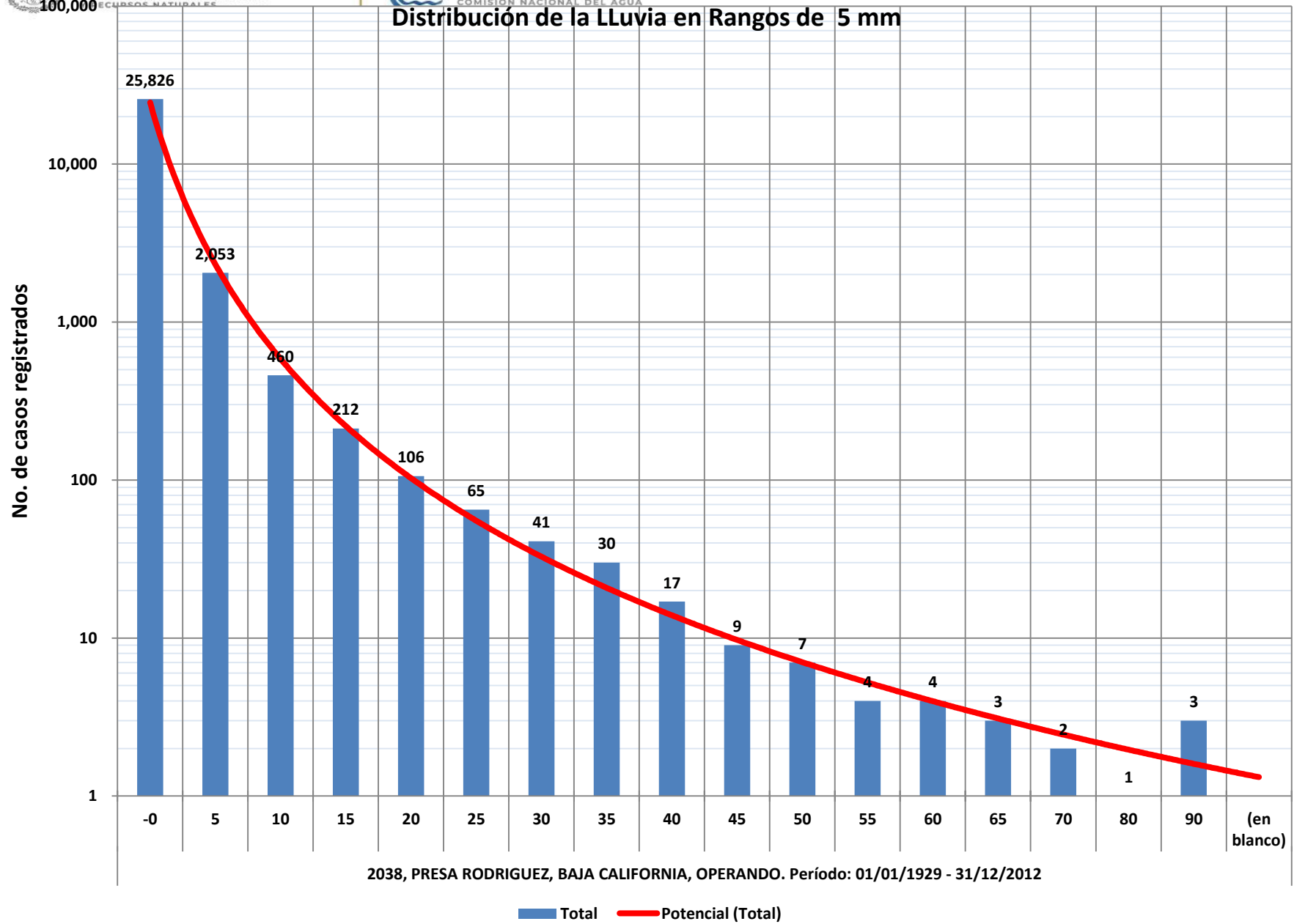






Promedio Diario de Lluvia





Estacion	2038
NOMBRE	PRESA RODRIGUEZ
ESTADO	BAJA CALIFORNIA

Década	Año	Temp Min (°C)			
		Mín.	Prom.	Máx.	Desv. Est.
1920	1929	0.5	11.2	23.0	5.1
	1930	5.0	12.7	21.0	4.0
Total 1920		0.5	11.8	23.0	4.8
1930	1932	2.2	6.6	11.6	2.1
	1933	1.2	10.8	23.0	4.3
	1934	2.8	12.9	30.0	3.8
	1935	1.5	11.1	26.0	4.6
	1936	2.0	12.0	21.0	4.6
	1939	0.2	12.1	25.0	4.3
	1940	3.5	12.6	20.1	3.4
Total 1930		0.2	11.9	30.0	4.3
1940	1941	4.0	13.9	22.0	3.7
	1942	3.3	12.2	23.7	3.8
	1943	4.5	12.9	21.9	3.7
	1944	4.5	12.3	20.2	3.5
	1945	4.0	12.7	21.5	4.7
	1946	4.0	12.3	22.5	4.2
	1947	2.0	12.8	24.0	3.7
	1948	3.2	11.9	20.4	4.0
	1949	2.9	13.0	27.2	4.8
	1950	0.5	10.9	21.0	4.2
Total 1940		0.5	12.4	27.2	4.1
1950	1951	2.1	11.0	19.0	4.0
	1952	0.2	10.7	19.0	4.2
	1953	0.5	10.6	20.0	4.2
	1954	0.1	11.3	21.0	4.2
	1955	1.0	10.7	24.9	4.5
	1956	0.9	10.9	20.9	4.4
	1957	3.1	11.7	22.0	4.0
	1958	0.0	11.8	21.0	4.6
	1959	2.0	12.4	21.9	4.2
	1960	-3.0	10.8	22.0	4.8
	Total 1950		-3.0	11.2	24.9
1960	1961	0.5	10.8	21.3	4.3
	1962	-0.2	9.9	19.2	4.2
	1963	-2.0	11.0	23.5	4.8
	1964	-0.6	10.3	19.9	4.8
	1965	0.5	10.5	24.5	4.2
	1966	0.5	11.3	22.0	4.6
	1967	1.9	11.3	22.2	4.8
	1968	-0.5	11.1	20.5	4.5
	1969	-6.0	12.2	21.0	4.5
	1970	0.2	11.8	27.0	4.3
Total 1960		-6.0	11.0	27.0	4.5
1970	1971	-1.5	10.9	23.5	5.1
	1972	1.0	11.6	22.2	4.8
	1973	0.3	11.0	22.3	4.3
	1974	0.8	11.4	21.5	4.6
	1975	1.0	10.6	19.9	4.4
	1976	-0.5	12.0	23.2	4.4
	1977	2.2	11.8	22.2	4.3
	1978	0.5	11.9	23.0	4.1
	1979	1.0	11.6	22.0	4.4
	1980	5.0	12.3	23.5	3.8
Total 1970		-1.5	11.5	23.5	4.4
1980	1981	4.0	12.8	21.5	4.1
	1982	1.8	11.6	22.2	4.2
	1983	2.7	12.6	22.5	4.4
	1984	2.0	12.1	22.5	5.1
	1985	1.5	11.3	22.5	4.4
	1986	2.5	11.0	18.0	3.4
	1987	-2.5	11.1	22.0	4.8
	1988	1.0	10.9	19.5	4.4
	1989	0.5	11.1	19.5	4.3
	1990	-2.0	11.5	20.5	4.8
Total 1980		-2.5	11.6	22.5	4.4

Estacion	2038
NOMBRE	PRESA RODRIGUEZ
ESTADO	BAJA CALIFORNIA

Década	Año	Temp Max (°C)			
		Mín.	Prom.	Máx.	Desv. Est.
1920	1929	9.5	23.3	37.0	5.8
	1930	12.5	24.1	37.5	5.2
Total 1920		9.5	23.5	37.5	5.6
1930	1932	8.0	16.0	24.2	3.6
	1933	9.6	24.4	39.5	5.5
	1934	12.5	25.4	38.5	4.8
	1935	12.0	23.4	39.0	5.4
	1936	9.0	24.8	35.5	5.5
	1939	10.8	24.0	42.0	5.6
	1940	14.8	24.8	38.7	4.7
Total 1930		8.0	24.3	42.0	5.4
1940	1941	14.0	25.1	35.0	4.8
	1942	11.7	24.9	35.5	4.5
	1943	13.2	25.6	38.7	5.3
	1944	12.4	23.7	38.7	4.2
	1945	10.5	25.3	38.0	4.9
	1946	10.5	25.0	34.4	4.5
	1947	10.0	23.2	36.1	4.9
	1948	6.4	22.2	34.5	5.1
	1949	8.0	23.4	37.2	6.7
	1950	11.0	23.8	38.2	5.0
Total 1940		6.4	24.2	38.7	5.1
1950	1951	11.0	22.7	35.5	4.9
	1952	11.0	22.2	35.0	5.5
	1953	10.5	23.6	38.9	4.9
	1954	11.2	23.3	35.1	4.9
	1955	11.2	22.1	42.1	5.5
	1956	11.5	23.3	38.5	5.4
	1957	11.0	22.8	41.5	5.2
	1958	12.7	24.3	41.5	5.2
	1959	12.2	24.2	39.5	4.6
	1960	10.0	23.1	37.2	5.4
	Total 1950		10.0	23.2	42.1
1960	1961	11.9	23.0	37.9	4.8
	1962	8.9	22.1	35.5	4.9
	1963	9.0	23.1	41.0	4.8
	1964	12.6	22.7	35.3	5.1
	1965	11.0	22.8	37.0	5.3
	1966	10.2	23.3	35.0	4.9
	1967	7.0	23.4	37.3	5.5
	1968	11.0	24.2	38.0	5.1
	1969	11.2	23.8	39.5	5.3
	1970	12.2	25.0	37.3	5.1
Total 1960		7.0	23.3	41.0	5.1
1970	1971	9.0	23.7	42.6	6.5
	1972	10.0	24.0	40.6	5.2
	1973	11.1	23.3	41.1	5.2
	1974	12.0	23.7	36.6	5.0
	1975	10.6	22.8	39.4	5.2
	1976	10.1	24.6	39.9	5.1
	1977	13.0	24.5	37.0	4.7
	1978	9.5	23.9	41.0	5.6
	1979	10.5	23.7	41.5	5.7
	1980	11.5	23.8	37.2	4.8
Total 1970		9.0	23.8	42.6	5.3
1980	1981	11.0	24.8	40.0	5.3
	1982	12.0	23.6	39.0	5.3
	1983	11.3	24.2	41.0	5.5
	1984	10.5	24.9	40.5	5.3
	1985	10.5	23.8	42.0	5.8
	1986	11.0	23.9	34.5	4.2
	1987	11.0	23.0	40.0	5.2
	1988	11.0	24.2	42.0	5.3
	1989	10.5	24.7	40.0	5.3
	1990	8.0	25.0	40.0	6.0
Total 1980		8.0	24.2	42.0	5.4

Estacion	2038
NOMBRE	PRESA RODRIGUEZ
ESTADO	BAJA CALIFORNIA

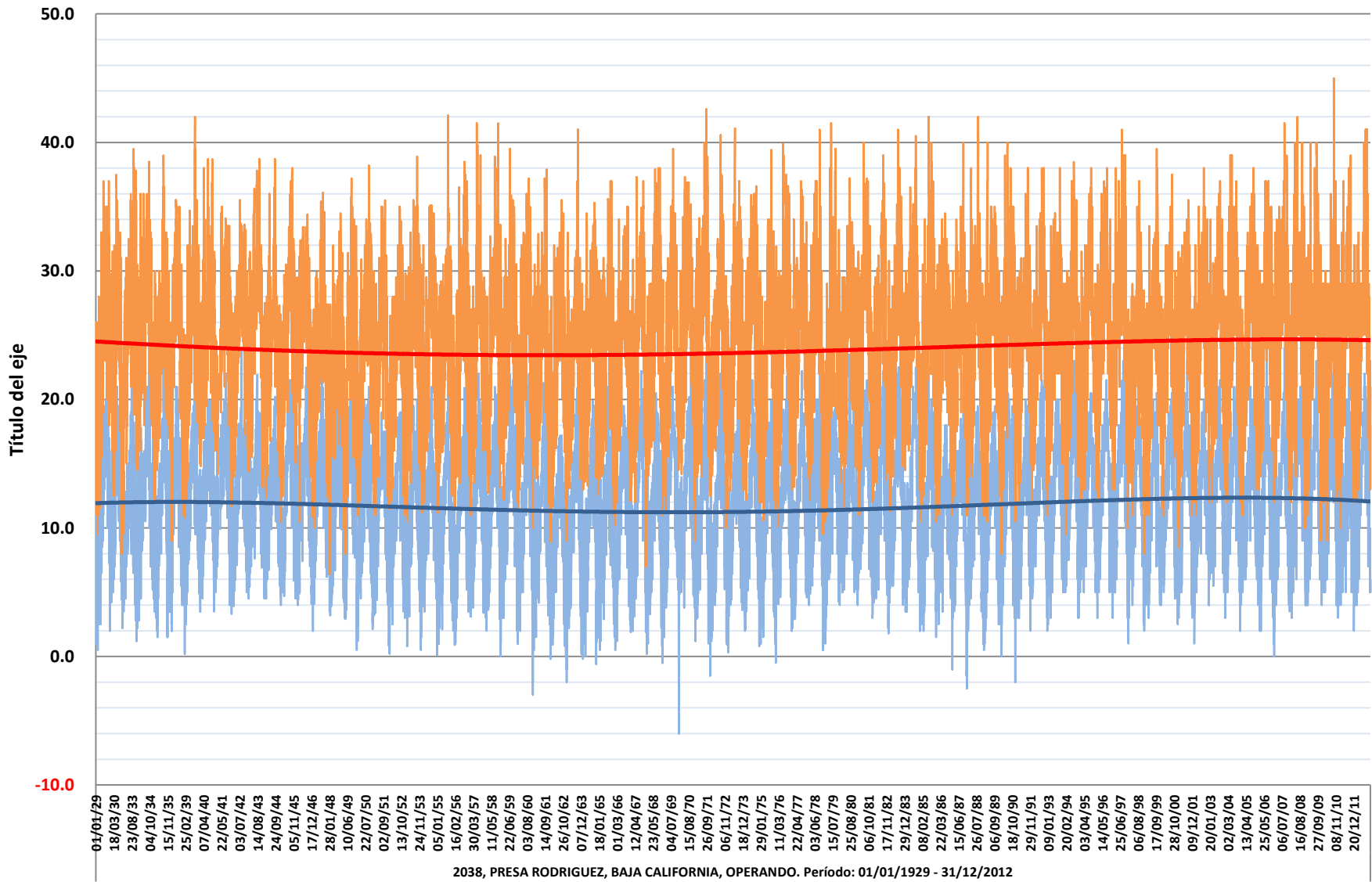
Década	Año	Temp Min (°C)			
		Mín.	Prom.	Máx.	Desv. Est.
1990	1991	2.0	11.1	20.0	4.1
	1992	2.0	12.3	21.5	4.2
	1993	2.5	12.5	20.0	4.1
	1994	3.0	12.4	23.0	4.4
	1995	5.0	12.6	20.5	3.7
	1996	3.0	12.8	21.5	4.0
	1997	1.0	13.1	23.0	4.6
	1998	2.0	11.8	22.5	4.5
	1999	3.0	11.3	20.5	4.0
	2000	4.0	12.2	20.5	4.2
Total 1990		1.0	12.2	23.0	4.2
2000	2001	2.5	11.8	23.0	4.4
	2002	1.0	11.6	20.0	4.0
	2003	3.0	12.5	21.5	4.2
	2004	2.0	12.1	21.0	4.3
	2005	5.0	12.3	21.0	3.6
	2006	2.0	12.3	23.0	4.9
	2007	0.0	11.8	24.0	4.5
	2008	3.0	12.6	21.0	4.5
	2009	4.0	12.5	23.0	4.5
	2010	4.0	12.1	25.0	4.0
Total 2000		0.0	12.2	25.0	4.3
2010	2011	2.0	11.8	22.0	4.3
	2012	4.0	12.8	22.0	4.6
Total 2010		2.0	12.3	22.0	4.4
Total general		-6.0	11.8	30.0	4.4

Estacion	2038
NOMBRE	PRESA RODRIGUEZ
ESTADO	BAJA CALIFORNIA

Década	Año	Temp Max (°C)			
		Mín.	Prom.	Máx.	Desv. Est.
1990	1991	11.0	23.6	38.0	4.8
	1992	11.0	24.8	38.0	5.4
	1993	13.5	24.6	38.0	4.8
	1994	9.5	24.1	38.5	5.4
	1995	12.0	24.4	38.0	5.1
	1996	12.0	25.5	38.0	4.9
	1997	10.0	25.9	41.0	5.5
	1998	8.0	22.8	37.0	4.8
	1999	11.0	23.7	39.5	5.0
	2000	11.0	24.2	37.5	4.7
Total 1990		8.0	24.4	41.0	5.1
2000	2001	8.5	23.1	35.5	5.4
	2002	11.0	23.6	38.0	4.9
	2003	12.0	24.4	37.0	5.0
	2004	12.0	24.2	39.0	5.3
	2005	11.0	24.7	38.0	4.9
	2006	13.0	25.5	37.0	5.3
	2007	12.0	26.0	41.5	5.5
	2008	10.0	25.5	42.0	6.2
	2009	9.0	24.9	40.0	5.7
	2010	9.0	23.5	45.0	5.1
Total 2000		8.5	24.5	45.0	5.4
2010	2011	10.0	24.1	39.0	4.9
	2012	12.0	25.2	41.0	5.5
Total 2010		10.0	24.7	41.0	5.2
Total general		6.4	24.0	45.0	5.3



Registro Diario de Temperaturas Mínima y Máxima



2038, PRESA RODRIGUEZ, BAJA CALIFORNIA, OPERANDO. Período: 01/01/1929 - 31/12/2012

Título del eje

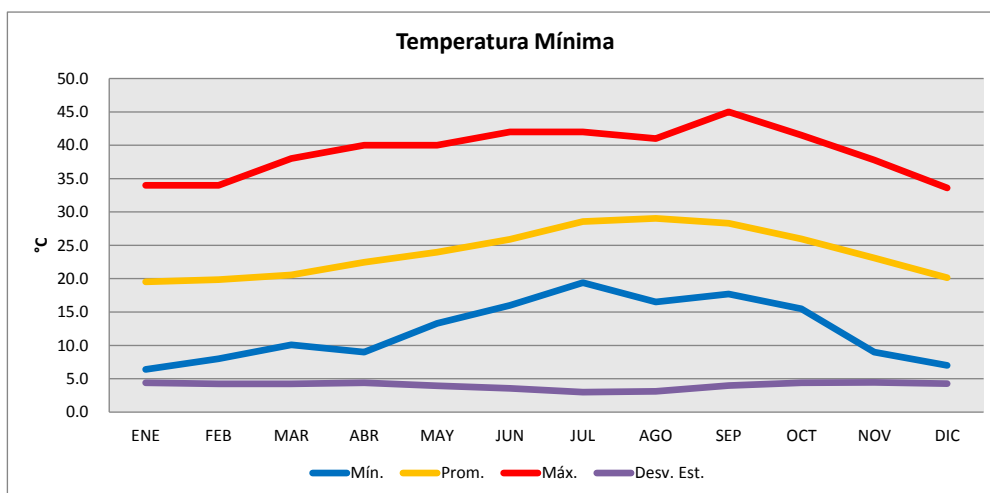
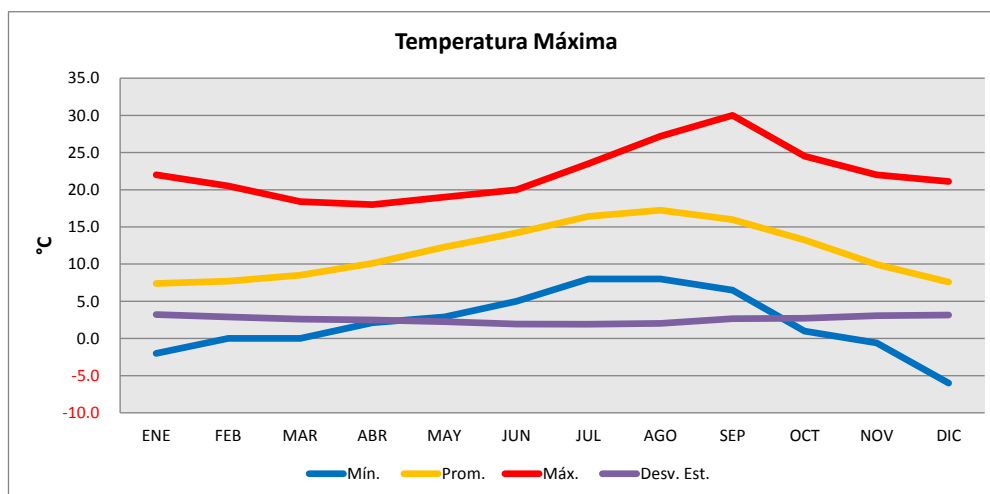
— Tmin. — Tmax. — Polinómica (Tmin.) — Polinómica (Tmax.)

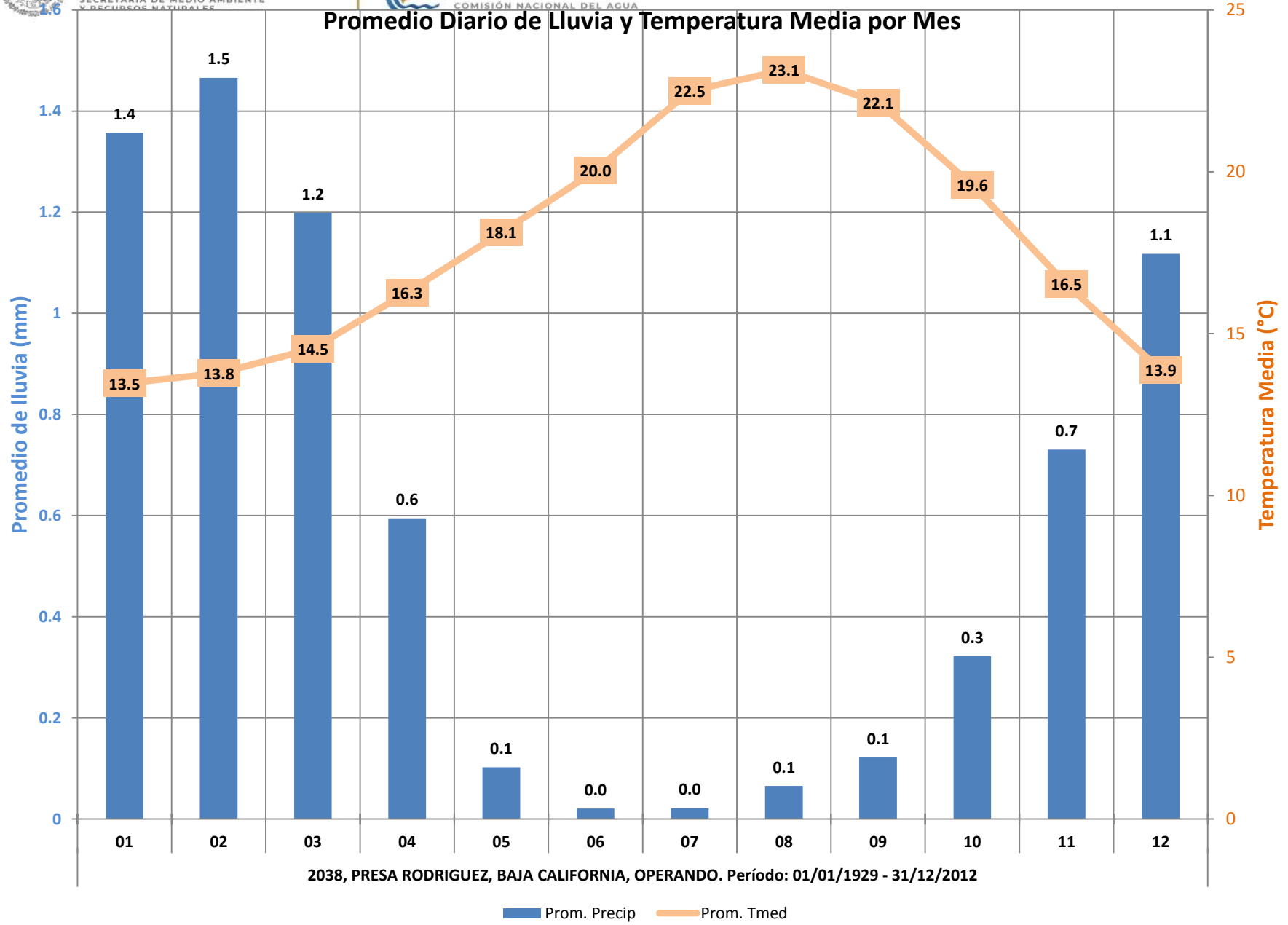
Estacion	2038
NOMBRE	PRESA RODRIGUEZ
ESTADO	BAJA CALIFORNIA

Estacion	2038
NOMBRE	PRESA RODRIGUEZ
ESTADO	BAJA CALIFORNIA

Temp Min (°C)					
Mes	Mín.	Prom.	Máx.	Desv. Est.	
ENE	-2.0	7.4	22.0	3.2	
FEB	0.0	7.7	20.5	2.9	
MAR	0.0	8.5	18.4	2.6	
ABR	2.1	10.1	18.0	2.5	
MAY	2.9	12.3	19.0	2.3	
JUN	5.0	14.2	20.0	1.9	
JUL	8.0	16.4	23.5	1.9	
AGO	8.0	17.2	27.2	2.0	
SEP	6.5	16.0	30.0	2.7	
OCT	1.0	13.2	24.5	2.7	
NOV	-0.6	9.9	22.0	3.1	
DIC	-6.0	7.6	21.1	3.1	
Total general	-6.0	11.8	30.0	4.4	

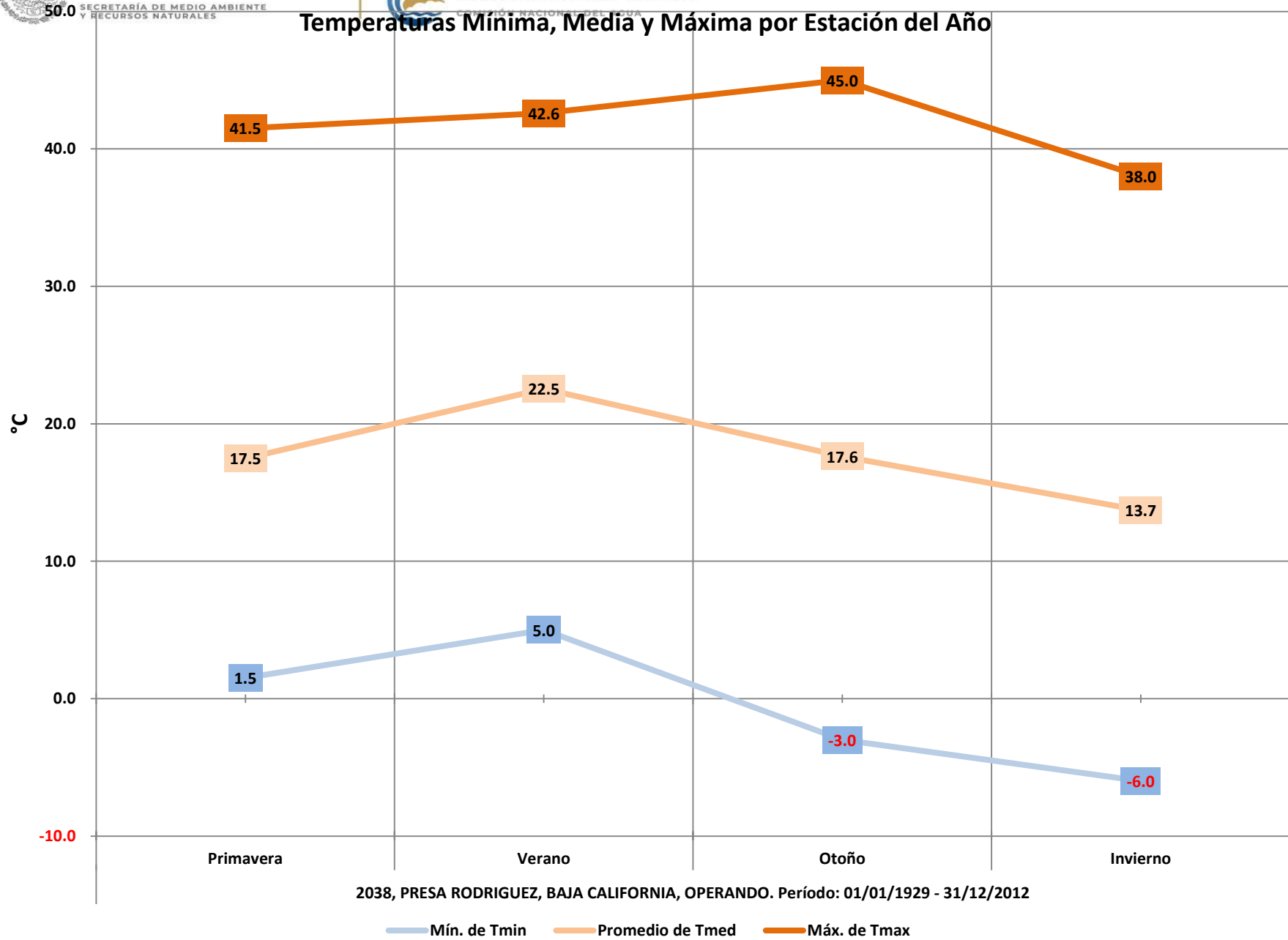
Temp Max (°C)					
Mes	Mín.	Prom.	Máx.	Desv. Est.	
ENE		6.4	19.5	34.0	4.4
FEB		8.0	19.9	34.0	4.2
MAR		10.1	20.6	38.0	4.2
ABR		9.0	22.4	40.0	4.4
MAY		13.3	24.0	40.0	4.0
JUN		16.0	25.9	42.0	3.6
JUL		19.4	28.6	42.0	3.0
AGO		16.5	29.0	41.0	3.1
SEP		17.7	28.3	45.0	4.0
OCT		15.5	25.9	41.5	4.4
NOV		9.0	23.1	37.8	4.5
DIC		7.0	20.2	33.6	4.3
Total general		6.4	24.0	45.0	5.3





Estacion	2038
NOMBRE	PRESA RODRIGUEZ
ESTADO	BAJA CALIFORNIA

Década	Año	Promedios											
		Estación Primavera			Verano			Otoño			Invierno		
		Lluvia (mm)	T min (°C)	T max (°C)	Lluvia (mm)	T min (°C)	T max (°C)	Lluvia (mm)	T min (°C)	T max (°C)	Lluvia (mm)	T min (°C)	T max (°C)
1920	1929	0.3	10.3	21.8	0.0	17.4	28.7	0.0	10.6	24.6	1.1	6.3	17.8
	1930	0.9	11.1	22.3	0.1	16.4	27.8	0.0	12.4	24.4	0.2	8.0	18.7
	Total 1920	0.5	10.6	21.9	0.1	16.9	28.2	0.0	11.1	24.5	0.8	6.9	18.1
1930	1932							3.6	6.9	15.7	0.7	6.0	16.4
	1933	0.3	10.5	24.3	0.0	15.3	27.6	0.2	9.7	25.7	1.9	6.9	18.9
	1934	0.2	12.8	25.4	0.0	16.9	29.7	0.1	11.7	23.9	0.0	10.1	22.5
	1935	0.1	10.7	22.4	0.0	16.4	28.9	0.1	9.6	23.3	0.3	7.8	18.7
	1936	0.0	13.0	25.8	0.0	16.7	29.9	0.1	11.1	23.6	0.4	6.5	18.7
	1939	0.0	12.0	23.4	0.1	16.7	28.6	0.1	12.3	26.0	0.1	7.1	17.9
	1940	0.0	13.1	24.6	0.0	15.7	28.1	0.1	12.1	25.7	0.3	9.5	20.8
Total 1930		0.1	11.9	24.2	0.0	16.3	28.8	0.2	10.9	24.4	0.5	8.0	19.6
1940	1941	0.2	15.3	26.4	0.1	16.7	28.4	0.7	13.3	25.0	0.3	9.4	19.2
	1942	0.3	12.3	23.8	0.0	16.1	28.7	0.3	11.2	26.3	1.0	9.3	20.9
	1943	0.4	12.0	26.1	0.0	16.8	29.9	1.4	12.6	25.5	1.9	10.0	20.8
	1944	0.2	12.1	24.9	0.0	15.8	27.1	1.2	12.5	23.1	2.3	8.7	19.8
	1945	0.2	11.5	24.9	0.2	17.9	29.4	0.0	12.6	26.8	2.3	8.8	19.8
	1946	0.5	12.9	26.5	0.0	16.7	28.0	0.6	11.4	22.5	0.6	7.9	22.9
	1947	0.1	13.9	23.3	0.0	16.1	27.1	0.5	12.1	22.6	0.3	8.8	19.6
	1948	0.1	11.7	22.1	0.0	15.7	26.2	0.1	12.6	22.6	1.2	7.7	18.0
	1949	0.0	14.0	25.7	0.0	17.1	27.1	0.4	13.1	25.4	0.5	6.5	14.7
	1950	0.3	10.8	22.9	0.0	15.2	27.4	0.1	11.0	26.4	0.7	6.4	18.6
Total 1940		0.3	12.4	24.5	0.0	16.4	27.9	0.5	12.2	24.6	1.1	8.4	19.6
1950	1951	0.3	11.1	22.2	0.1	15.3	27.0	0.7	10.8	22.2	1.2	6.7	19.3
	1952	0.1	10.9	22.3	0.0	15.3	27.8	1.2	10.6	22.3	2.7	6.2	16.6
	1953	0.2	10.0	21.6	0.0	15.4	27.6	0.2	10.5	24.9	0.4	6.4	20.5
	1954	1.0	11.4	21.3	0.0	16.2	27.8	0.3	10.5	24.0	1.2	7.0	19.8
	1955	0.6	10.0	21.6	0.0	16.0	27.8	0.2	10.1	20.9	0.7	6.4	18.0
	1956	0.3	11.0	21.9	0.0	15.3	27.5	0.1	11.2	25.3	0.3	6.0	18.5
	1957	0.6	11.2	22.1	0.0	16.2	28.4	0.7	10.7	22.3	1.7	8.5	18.3
	1958	0.7	11.9	23.0	0.0	16.8	28.5	0.2	11.1	26.1	1.5	7.5	19.6
	1959	0.1	12.2	23.4	0.0	17.6	28.5	0.2	11.8	24.5	1.3	8.1	20.6
	1960	0.1	11.2	23.1	0.2	16.3	28.5	0.3	9.3	22.3	0.9	6.4	18.6
Total 1950		0.4	11.1	22.2	0.0	16.0	27.9	0.4	10.7	23.5	1.2	6.9	19.0
1960	1961	0.1	10.6	21.8	0.2	15.8	27.4	0.6	9.7	21.3	0.2	7.2	21.6
	1962	0.1	9.8	21.9	0.0	14.4	26.8	0.1	9.3	22.4	1.7	5.8	17.2
	1963	0.3	10.5	21.0	0.6	15.6	27.2	0.5	10.6	24.1	0.7	7.2	20.0
	1964	0.4	9.9	21.1	0.0	15.1	27.3	0.4	11.0	23.5	0.8	5.1	18.9
	1965	1.5	10.4	21.0	0.1	14.6	26.4	2.3	11.0	24.0	0.7	6.0	19.6
	1966	0.1	11.9	22.8	0.0	15.9	28.0	1.0	11.8	23.7	0.6	5.3	18.5
	1967	0.6	9.6	20.9	0.0	17.1	28.6	1.8	11.3	23.6	1.1	6.9	20.5
	1968	0.2	10.5	23.1	0.0	16.5	28.7	0.2	10.3	24.8	0.6	7.2	20.0
	1969	0.2	12.5	23.2	0.0	17.2	29.2	0.2	11.4	24.4	1.9	7.5	18.1
	1970	0.1	11.2	26.2	0.0	16.6	29.4	0.7	11.0	23.8	1.4	8.4	20.6
Total 1960		0.3	10.7	22.3	0.1	15.9	27.9	0.8	10.7	23.6	1.0	6.7	19.5
1970	1971	0.3	10.8	22.2	0.0	17.2	30.9	0.3	8.7	22.2	0.7	6.8	19.4
	1972	0.2	11.7	24.1	0.1	17.3	29.1	1.4	10.5	22.1	0.1	7.1	20.7
	1973	0.1	11.0	22.8	0.0	15.8	27.6	0.4	10.2	24.3	2.3	6.7	18.4
	1974	0.1	11.3	23.1	0.0	16.5	28.8	0.5	11.2	23.5	1.3	6.4	19.2
	1975	0.7	10.4	20.4	0.0	15.5	27.5	0.4	9.8	23.8	1.0	6.6	19.5
	1976	0.4	11.2	23.3	0.8	16.8	28.7	0.7	12.3	25.9	2.3	7.6	20.7
	1977	0.7	11.0	22.8	0.5	16.7	28.9	0.3	11.3	25.3	1.6	8.1	21.0
	1978	0.5	11.7	24.4	0.0	15.7	28.2	1.2	11.2	23.6	3.3	8.9	19.4
	1979	0.3	11.4	23.1	0.1	16.5	29.1	0.2	11.5	24.5	1.7	6.8	18.0
	1980	0.5	11.1	21.6	0.0	16.7	28.5	0.0	11.5	24.4	3.4	9.7	20.7
Total 1970		0.4	11.2	22.8	0.2	16.5	28.7	0.5	10.8	24.0	1.8	7.5	19.7
1980	1981	0.2	13.2	24.0	0.0	17.8	30.6	0.4	11.3	24.0	1.5	9.0	20.7
	1982	0.4	11.7	22.4	0.1	16.4	28.6	1.1	10.5	24.2	1.8	7.9	19.2
	1983	0.8	11.4	22.3	0.1	17.8	30.3	0.7	12.2	24.0	3.2	9.1	20.1
	1984	0.2	11.8	24.9	0.1	18.9	30.8	1.3	10.3	22.3	0.8	7.3	21.5
	1985	0.1	11.5	24.0	0.0	16.2	29.4	1.7	10.8	22.6	0.5	6.8	19.1
	1986	0.0	10.8	25.4	0.0	15.3	27.2	1.0	10.4	23.1	1.6	9.1	20.8
	1987	0.3	11.4	24.1	0.0	15.1	26.7	2.5	11.4	23.1	1.2	6.3	18.4
	1988	0.8	10.5	24.3	0.0	16.2	28.5	0.5	10.0	23.4	1.3	6.7	20.1
	1989	0.3	11.8	24.7	0.0	15.3	28.7	0.0	10.6	24.9	0.3	6.4	20.4
	1990	0.2	11.8	23.8	0.0	16.7	30.1	0.4	11.3	26.8	1.3	6.0	19.3
Total 1980		0.3	11.6	24.0	0.0	16.6	29.1	1.0	10.9	23.8	1.4	7.5	20.0
1990	1991	0.6	10.2	22.1	0.0	15.4	26.9	0.3	11.6	25.2	2.6	6.9	20.0
	1992	0.6	13.4	24.6	0.0	16.7	30.2	0.5	11.0	24.5	2.4	8.1	20.1
	1993	0.4	12.6	25.0	0.0	17.2	28.2	0.4	11.4	25.1	4.5	8.6	20.0
	1994	0.6	12.3	22.7	0.0	17.5	29.7	0.2	10.5	22.8	1.6	9.2	21.0
	1995	0.6	11.1	22.4	0.0	17.0	30.2	0.1	12.4	24.5	3.3	9.8	20.3
	1996	0.1	12.9	26.8	0.0	17.7	29.7	0.6	11.4	24.2	1.1	9.3	21.1
	1997	0.1	13.5	26.8	0.0	17.8	30.5	1.2	12.5	24.7	1.3	8.4	21.7
	1998	1.4	10.9	21.5	0.2	17.7	27.7	0.4	10.5	22.9	3.4	8.2	18.9
	1999	0.7	10.3	21.8	0.0	15.7	27.3	0.2	11.5	25.6	0.6	7.8	20.0
	2000	0.1	12.4	24.7	0.1	17.2	29.2	0.2	11.0	22.3	1.1	8.3	20.5
Total 1990		0.5	12.0	23.8	0.0	17.0	28.9	0.4	11.4	24.2	2.2	8.5	20.4
2000	2001	0.2	12.1	23.1	0.0	16.7	27.9	0.3	11.3	22.8	2.7	7.1	18.5
	2002	0.2	11.9	22.8	0.0	15.8	28.2	0.5	11.7	23.6	0.4	6.8	19.9
	2003	0.5	11.7	22.8	0.0	17.2	29.4	0.2	11.9	23.8	1.8	9.1	21.3
	2004	0.2	12.7	25.5	0.0	17.2	28.8	2.6	10.7	22.2	1.9	7.9	20.2
	2005	0.2	11.5	24.5	0.0	16.3	28.8	0.1	12.0	25.3	2.2	9.4	20.2
	2006	0.6	11.8	24.2	0.0	18.3	31.0	0.1	11.5	25.5	0.9	7.3	21.1
	2007	0.2	11.8</										





Lluvia Promedio y Máxima, por Estación del Año

