



Datos de la Estación

ESTACIÓN:	14096
NOMBRE:	MASCOTA (SMN)
ESTADO:	JALISCO
MUNICIPIO:	MASCOTA
LATITUD (°):	20.5253
LONGITUD (°):	-104.7864
ALTURA (msn):	1,230
SITUACIÓN:	OPERANDO
DATOS DESDE:	1 de junio de 1923
HASTA:	31 de marzo de 2019

Inventario de Registros por Década Año

Estacion		N°de Casos							
Estacion	14096	Decada	Año	Lluvia	Temp min	Temp max	Temp amb	Evaporación	
1920	1923		1923	139	139	136	31		
			1926	242	245	237	245		
			1927	313	314	304	314		
			1928	365	362	352	362		
			1929	272	273	264	273		
			1930	357	365	353	365		
	Total 1920			1,688	1,698	1,646	1,590		
	1930	1931		1931	357	365	353	365	
				1932	365	366	356	366	
				1933	360	365	354	365	
			1934	365	365	361	365		
			1935	364	365	365	365		
			1936	365	366	366	366		
			1937	361	364	365	364		
			1938	361	365	365	365		
			1939	365	365	365	365		
			1940	31	31	31	31		
Total 1930			3,294	3,317	3,281	3,317			
1940	1941		1941	152	153	153	153		
			1942	365	364	365	364		
			1943	365	365	363	365		
			1944	333	335	335	335		
			1945	363	365	365	365		
			1946	365	365	365	365		
			1947	363	365	365	365		
			1948	361	366	366	366		
			1949	362	365	364	365		
			1950	365	365	365	365		
Total 1940			3,394	3,408	3,406	3,408			
1950	1951		1951	365	365	365	365		
			1952	335	335	335	335		
			1953	334	334	334	334		
			1954	365	365	365	365		
			1955	365	365	365	353		
			1956	366	366	366	366		
			1957	363	364	365	365		
			1958	364	365	365	365		
			1959	332	334	334	334		
			1960	363	366	366	366		
Total 1950			3,552	3,559	3,560	3,548			
1960	1961		1961	365	365	360	365		
			1962	365	365	365	365		
			1963	365	365	365	365		
			1964	366	366	366	366		
			1965	365	365	365	365		
			1966	365	365	365	365		
			1967	365	365	365	365		
			1968	366	366	366	366		
			1969	363	364	364	365		
			1970	365	365	365	365		



Datos de la Estación

ESTACIÓN:	14096
NOMBRE:	MASCOTA (SMN)
ESTADO:	JALISCO
MUNICIPIO:	MASCOTA

Inventario de Registros por Década Año

Estacion		N°de Casos				
Decada	Año	Lluvia	Temp min	Temp max	Temp amb	Evaporación
Total 1960		3,650	3,651	3,646	3,652	
1970	1971	365	365	365	365	
	1972	366	366	366	366	
	1973	365	365	365	365	
	1974	365	365	365	365	
	1975	365	365	365	365	
	1976	366	366	366	366	366
	1977	365	365	365	365	331
	1978	365	365	365	365	359
	1979	365	365	365	365	365
	1980	366	365	366	366	335
Total 1970		3,653	3,652	3,653	3,653	1,756
1980	1981	365	365	365	365	365
	1982	365	365	365	365	365
	1983	365	365	365	365	365
	1984	366	366	365	366	366
	1985	365	365	365	365	365
	1986	365	365	365	365	365
	1987	365	365	365	365	235
	1988	366	366	365	366	363
	1989	364	364	364	364	11
	1990	365	365	365	365	
Total 1980		3,651	3,651	3,649	3,651	2,800
1990	1991	364	364	363	364	183
	1992	334	329	334	334	182
	1993	331	333	332	332	
	1994	365	330	365	365	
	1995	364	357	365	365	
	1996	365	366	366	366	
	1997	364	365	365	365	
	1998	363	365	365	365	
	1999	335	335	335	335	
	2000	365	366	365	366	95
Total 1990		3,550	3,510	3,555	3,557	460
2000	2001	365	365	365	365	364
	2002	365	365	365	365	365
	2003	365	365	365	365	365
	2004	366	366	366	366	366
	2005	365	365	365	365	365
	2006	365	365	365	365	365
	2007	365	365	365	365	365
	2008	335	335	335	335	335
	2009	365	365	365	365	365
	2010	365	365	365	365	365
Total 2000		3,621	3,621	3,621	3,621	3,620
2010	2011	365	365	365	365	365
	2012	366	366	366	366	366
	2013	365	365	365	365	365
	2014	365	365	365	365	365
	2015	365	365	365	365	365



Datos de la Estación

ESTACIÓN:	14096
NOMBRE:	MASCOTA (SMN)
ESTADO:	JALISCO
MUNICIPIO:	MASCOTA

Inventario de Registros por Década Año

Estacion 14096

Decada	Año	N° de Casos				
		Lluvia	Temp min	Temp max	Temp amb	Evaporación
2010	2016	366	366	366	366	366
	2017	365	365	365	365	365
	2018	365	365	365	365	365
	2019	90	90	90	90	90
Total 2010		3,012	3,012	3,012	3,012	3,012
Total general		33,065	33,079	33,029	33,009	11,648

Estacion	14096
NOMBRE	MASCOTA (SMN)
ESTADO	JALISCO

Década	Año	Lluvia (mm)			
		Mín.	Prom.	Máx.	Desv. Est.
1920	1923	0.0	4.9	42.0	7.6
	1926	0.0	3.1	34.0	5.9
	1927	0.0	1.9	38.0	5.5
	1928	0.0	2.4	47.5	5.9
	1929	0.0	2.0	40.0	5.3
	1930	0.0	1.9	74.2	6.3
Total 1920		0.0	2.4	74.2	6.0
1930	1931	0.0	2.4	56.0	6.0
	1932	0.0	1.8	61.0	6.0
	1933	0.0	2.3	47.0	5.8
	1934	0.0	2.1	65.0	6.4
	1935	0.0	2.6	40.0	5.8
	1936	0.0	2.0	32.5	5.2
	1937	0.0	1.9	53.0	5.9
	1938	0.0	2.2	50.0	5.7
	1939	0.0	1.8	39.0	4.6
	1940	0.0	0.5	10.0	2.0
	Total 1930		0.0	2.1	65.0
1940	1941	0.0	2.9	20.0	5.9
	1942	0.0	1.9	49.0	6.1
	1943	0.0	1.8	46.0	6.2
	1944	0.0	1.1	28.0	4.1
	1945	0.0	2.2	58.0	6.4
	1946	0.0	2.7	51.0	7.0
	1947	0.0	2.3	57.5	6.9
	1948	0.0	2.8	48.0	6.5
	1949	0.0	2.7	63.8	7.7
	1950	0.0	2.4	71.0	7.4
	Total 1940		0.0	2.3	71.0
1950	1951	0.0	2.6	67.0	7.2
	1952	0.0	3.2	69.0	8.7
	1953	0.0	2.7	59.0	7.9
	1954	0.0	2.6	70.0	7.9
	1955	0.0	2.9	96.0	8.4
	1956	0.0	2.2	72.3	6.7
	1957	0.0	1.9	60.0	6.0
	1958	0.0	3.4	51.6	8.1
	1959	0.0	3.1	56.0	7.5
	1960	0.0	2.8	45.0	7.3
	Total 1950		0.0	2.7	96.0
1960	1961	0.0	2.8	85.0	7.9
	1962	0.0	3.2	61.4	8.1
	1963	0.0	3.8	56.5	8.5
	1964	0.0	2.6	67.0	6.7
	1965	0.0	2.7	38.0	6.4
	1966	0.0	3.7	76.0	8.7
	1967	0.0	3.2	46.3	7.6
	1968	0.0	3.3	110.0	9.4
	1969	0.0	2.2	59.2	6.6
	1970	0.0	2.6	57.6	7.0
	Total 1960		0.0	3.0	110.0
1970	1971	0.0	2.9	102.0	8.5
	1972	0.0	2.8	49.0	7.3
	1973	0.0	2.7	45.0	6.9
	1974	0.0	2.7	63.0	7.4
	1975	0.0	2.0	48.0	5.6
	1976	0.0	3.1	55.0	8.0
	1977	0.0	2.5	43.0	6.4
	1978	0.0	2.6	46.0	6.5
	1979	0.0	2.1	64.5	7.5
	1980	0.0	3.0	51.5	7.6
	Total 1970		0.0	2.6	102.0
1980	1981	0.0	2.8	50.0	7.6
	1982	0.0	2.4	60.0	7.5

Estacion	14096
NOMBRE	MASCOTA (SMN)
ESTADO	JALISCO

Década	Año	Evap (mm)				
		Mín.	Prom.	Máx.	Desv. Est.	
1920	1923					
	1926					
	1927					
	1928					
	1929					
	1930					
Total 1920						
1930	1931					
	1932					
	1933					
	1934					
	1935					
	1936					
	1937					
	1938					
	1939					
	1940					
	Total 1930					
1940	1941					
	1942					
	1943					
	1944					
	1945					
	1946					
	1947					
	1948					
	1949					
	1950					
	Total 1940					
1950	1951					
	1952					
	1953					
	1954					
	1955					
	1956					
	1957					
	1958					
	1959					
	1960					
	Total 1950					
1960	1961					
	1962					
	1963					
	1964					
	1965					
	1966					
	1967					
	1968					
	1969					
	1970					
	Total 1960					
1970	1971					
	1972					
	1973					
	1974					
	1975					
	1976		0.1	4.1	9.5	1.8
	1977		0.3	3.8	8.8	1.7
	1978		0.2	4.3	15.0	2.2
	1979		0.4	4.7	13.4	1.9
	1980		0.0	5.2	14.7	2.4
	Total 1970		0.0	4.4	15.0	2.1
1980	1981		0.3	5.0	10.7	2.2
	1982		0.8	5.6	14.7	2.5

Estacion	14096
NOMBRE	MASCOTA (SMN)
ESTADO	JALISCO

		Lluvia (mm)				
Década	Año	Mín.	Prom.	Máx.	Desv. Est.	
1980	1983	0.0	2.6	80.0	7.8	
	1984	0.0	2.7	55.5	7.2	
	1985	0.0	3.2	55.0	8.4	
	1986	0.0	2.6	49.5	7.0	
	1987	0.0	2.5	69.6	7.8	
	1988	0.0	3.1	63.0	9.1	
	1989	0.0	2.4	56.4	7.1	
	1990	0.0	2.6	42.3	6.8	
	Total 1980		0.0	2.7	80.0	7.6
	1990	1991	0.0	2.4	45.1	6.9
1992		0.0	2.8	74.0	9.3	
1993		0.0	3.2	83.0	10.2	
1994		0.0	2.5	47.0	6.8	
1995		0.0	2.9	50.0	8.0	
1996		0.0	3.0	78.0	9.1	
1997		0.0	3.1	52.0	7.6	
1998		0.0	2.9	51.0	7.8	
1999		0.0	2.5	56.0	7.8	
2000		0.0	2.9	105.0	8.9	
Total 1990			0.0	2.8	105.0	8.3
2000	2001	0.0	2.6	58.5	7.6	
	2002	0.0	2.6	44.0	7.2	
	2003	0.0	3.1	71.2	9.1	
	2004	0.0	2.8	51.3	7.3	
	2005	0.0	2.2	46.6	6.7	
	2006	0.0	2.5	41.4	6.8	
	2007	0.0	2.4	68.2	7.1	
	2008	0.0	3.2	95.5	9.3	
	2009	0.0	2.4	62.0	6.8	
	2010	0.0	3.4	110.8	10.0	
	Total 2000		0.0	2.7	110.8	7.9
2010	2011	0.0	2.8	64.4	8.1	
	2012	0.0	3.3	84.2	9.6	
	2013	0.0	3.9	86.8	9.6	
	2014	0.0	3.7	59.0	9.3	
	2015	0.0	3.6	116.2	11.1	
	2016	0.0	2.2	78.5	6.9	
	2017	0.0	2.9	83.4	9.0	
	2018	0.0	3.3	95.0	9.2	
	2019	0.0	0.2	6.5	1.1	
Total 2010		0.0	3.1	116.2	9.0	
Total general		0.0	2.7	116.2	7.5	

Estacion	14096
NOMBRE	MASCOTA (SMN)
ESTADO	JALISCO

		Evap (mm)				
Década	Año	Mín.	Prom.	Máx.	Desv. Est.	
1980	1983	0.9	5.1	11.6	2.3	
	1984	0.1	5.0	11.1	2.2	
	1985	0.2	5.2	11.8	2.4	
	1986	0.2	4.4	10.9	1.4	
	1987	0.7	4.4	9.9	1.6	
	1988	0.1	4.7	15.8	1.8	
	1989	2.5	5.7	12.3	3.3	
	1990					
	Total 1980		0.1	5.0	15.8	2.1
	1990	1991	0.1	3.0	10.2	1.1
1992		0.4	4.1	7.5	1.8	
1993						
1994						
1995						
1996						
1997						
1998						
1999						
2000		1.0	3.8	6.8	1.3	
Total 1990			0.1	3.6	10.2	1.5
2000	2001	0.1	5.1	10.4	2.0	
	2002	0.2	5.2	10.9	2.2	
	2003	0.6	5.4	12.0	2.1	
	2004	0.2	5.1	10.8	2.0	
	2005	0.5	5.4	11.9	2.4	
	2006	0.4	5.2	11.3	2.2	
	2007	0.2	5.2	10.8	2.2	
	2008	0.2	5.2	9.8	1.9	
	2009	0.6	5.2	10.2	1.9	
	2010	0.9	5.0	14.1	1.9	
	Total 2000		0.1	5.2	14.1	2.1
2010	2011	0.5	5.8	13.2	2.2	
	2012	1.2	5.1	12.1	1.9	
	2013	0.7	5.2	14.7	2.1	
	2014	0.3	5.0	12.6	2.0	
	2015	0.8	4.6	13.5	1.8	
	2016	1.1	5.0	10.7	1.8	
	2017	0.7	5.1	14.3	2.1	
	2018	0.1	5.0	13.4	2.2	
	2019	0.2	4.3	9.2	1.9	
Total 2010		0.1	5.1	14.7	2.0	
Total general		0.0	4.9	15.8	2.1	

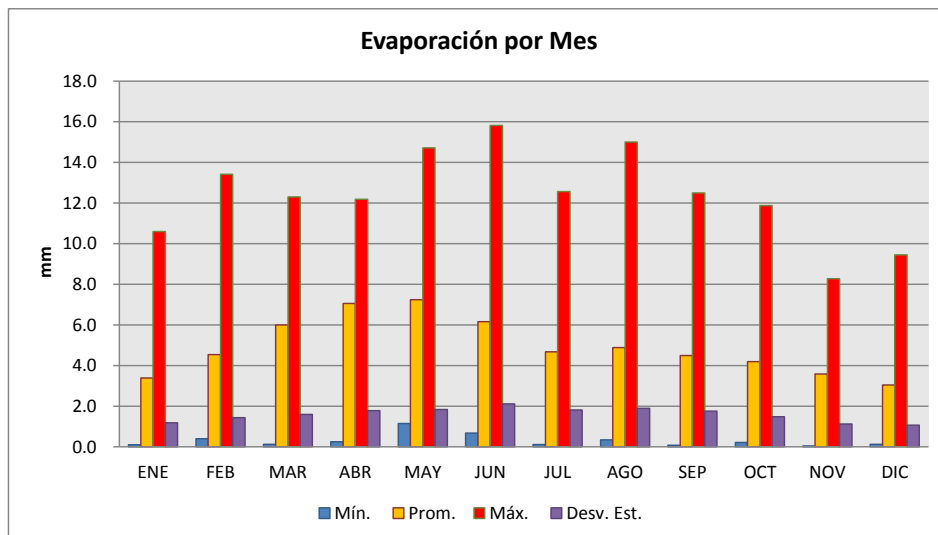
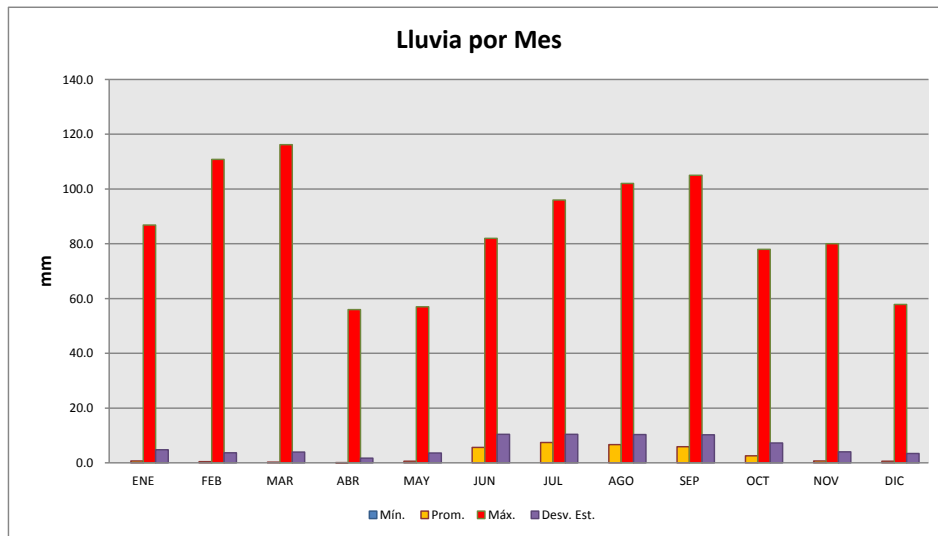


Estación	14096
NOMBRE	MASCOTA (SMN)
ESTADO	JALISCO

Estación	14096
NOMBRE	MASCOTA (SMN)
ESTADO	JALISCO

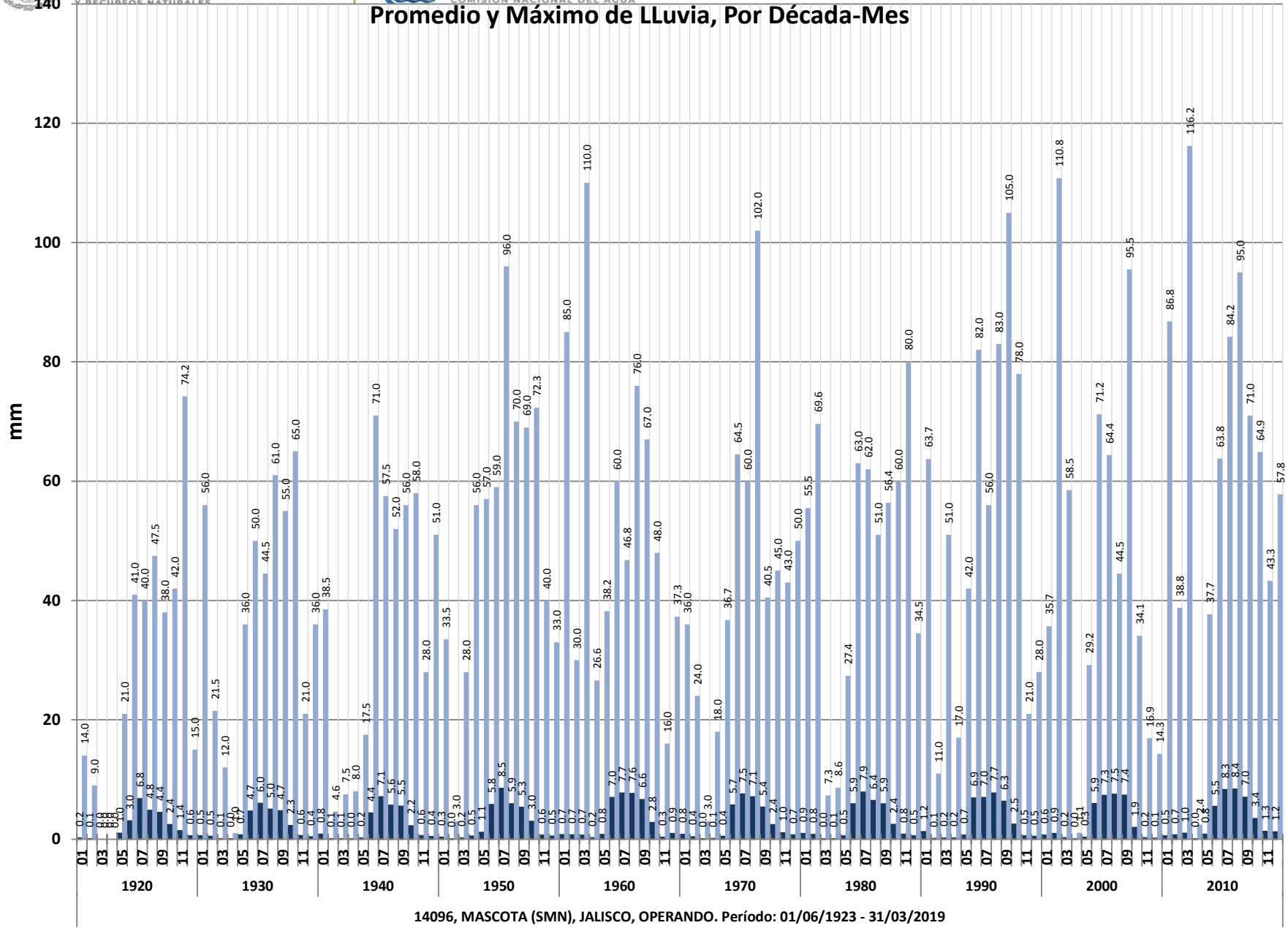
Lluvia (mm)					
Mes	Mín.	Prom.	Máx.	Desv. Est.	
ENE	0.0	0.7	86.8	4.8	
FEB	0.0	0.4	110.8	3.7	
MAR	0.0	0.2	116.2	3.9	
ABR	0.0	0.1	56.0	1.7	
MAY	0.0	0.6	57.0	3.6	
JUN	0.0	5.6	82.0	10.4	
JUL	0.0	7.4	96.0	10.4	
AGO	0.0	6.7	102.0	10.3	
SEP	0.0	5.9	105.0	10.2	
OCT	0.0	2.5	78.0	7.3	
NOV	0.0	0.7	80.0	4.0	
DIC	0.0	0.6	57.8	3.4	
Total general	0.0	2.7	116.2	7.5	

Evap (mm)					
Mes	Mín.	Prom.	Máx.	Desv. Est.	
ENE		0.1	3.4	10.6	1.2
FEB		0.4	4.5	13.4	1.4
MAR		0.1	6.0	12.3	1.6
ABR		0.3	7.1	12.2	1.8
MAY		1.1	7.2	14.7	1.8
JUN		0.7	6.2	15.8	2.1
JUL		0.1	4.7	12.6	1.8
AGO		0.3	4.9	15.0	1.9
SEP		0.1	4.5	12.5	1.8
OCT		0.2	4.2	11.9	1.5
NOV		0.0	3.6	8.3	1.1
DIC		0.1	3.0	9.4	1.1
Total general	0.0	4.9	15.8	2.1	

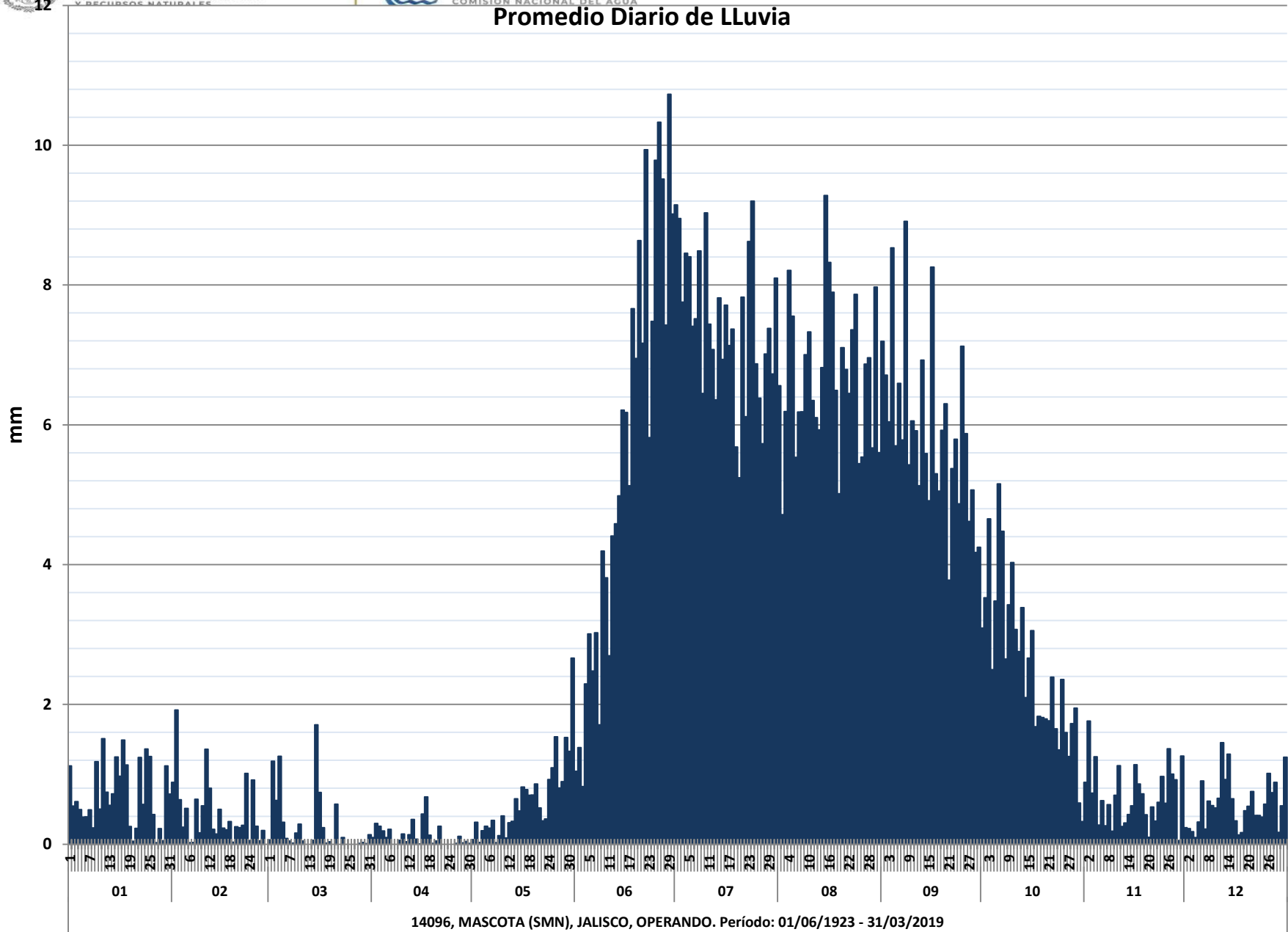


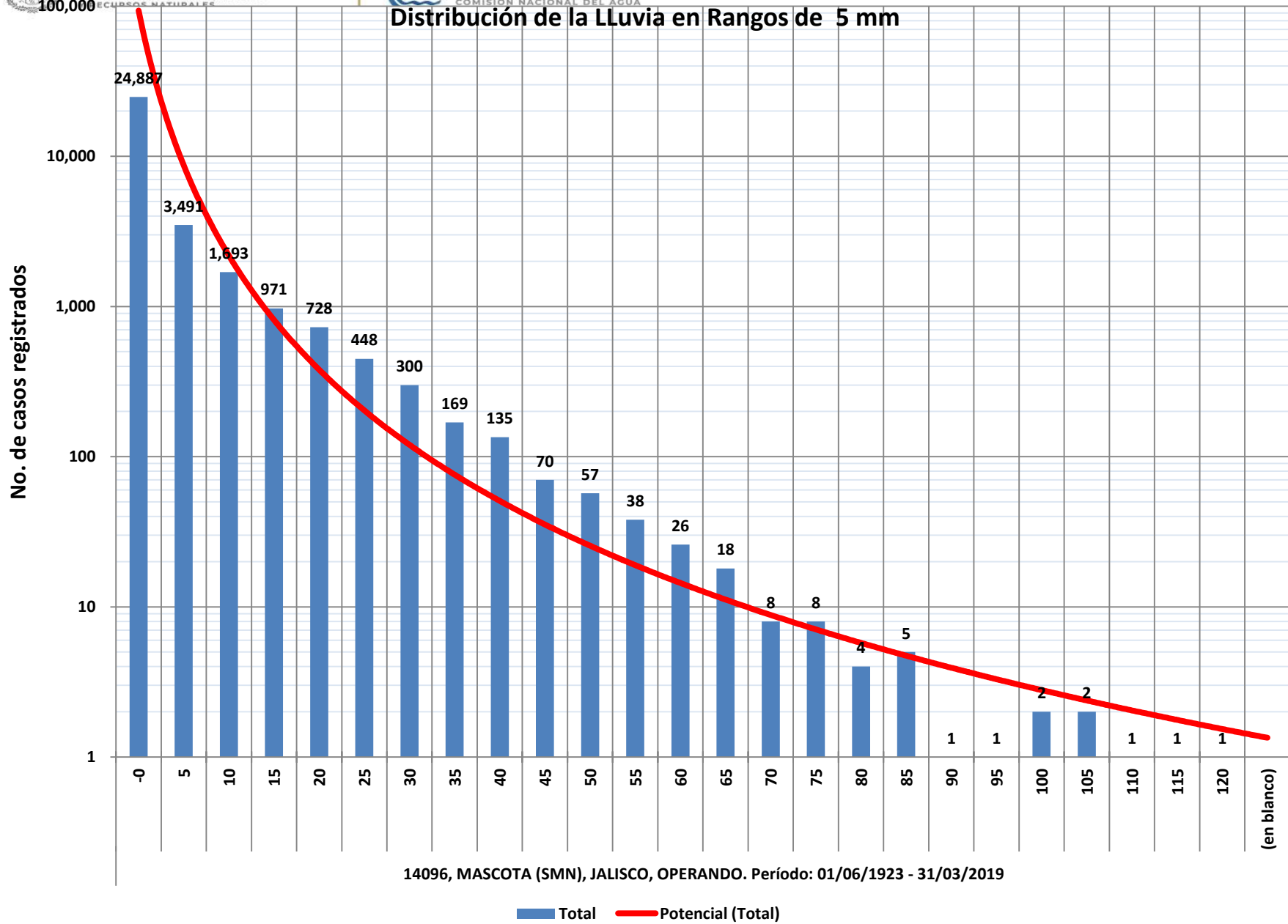


Promedio y Máximo de Lluvia, Por Década-Mes



14096, MASCOTA (SMN), JALISCO, OPERANDO. Período: 01/06/1923 - 31/03/2019





Estacion	14096
NOMBRE	MASCOTA (SMN)
ESTADO	JALISCO

Década	Año	Temp Min (°C)			
		Mín.	Prom.	Máx.	Desv. Est.
1920	1923	8.0	15.0	19.0	1.8
	1926	7.5	15.5	21.0	3.5
	1927	4.5	13.4	21.0	3.6
	1928	5.2	14.3	20.5	3.6
	1929	4.5	14.4	21.0	3.9
	1930	5.0	13.9	20.0	3.0
Total 1920		4.5	14.3	21.0	3.5
1930	1931	2.0	13.8	20.5	4.1
	1932	3.5	14.1	20.5	3.6
	1933	5.5	14.5	20.0	3.3
	1934	4.5	13.8	20.0	3.5
	1935	4.5	14.5	21.0	3.9
	1936	10.0	20.0	27.0	3.3
	1937	1.0	17.5	24.0	3.1
	1938	8.0	15.1	20.0	2.7
	1939	7.0	15.3	22.0	3.3
	1940	12.0	12.5	14.0	0.6
	Total 1930		1.0	15.4	27.0
1940	1941	13.0	17.7	20.0	1.6
	1942	5.0	16.0	22.0	3.0
	1943	1.0	14.0	21.5	4.1
	1944	0.0	10.6	21.0	6.6
	1945	5.7	13.8	21.0	3.5
	1946	5.0	14.0	20.7	3.3
	1947	5.0	13.7	20.0	3.7
	1948	2.5	13.8	20.0	3.3
	1949	1.0	11.8	20.0	4.6
	1950	2.0	13.0	20.0	3.8
	Total 1940		0.0	13.6	22.0
1950	1951	-1.0	13.4	20.0	4.0
	1952	3.0	13.7	20.0	3.5
	1953	2.0	13.7	21.0	4.2
	1954	6.0	13.7	20.0	3.4
	1955	2.0	13.6	20.0	4.4
	1956	3.5	14.2	21.5	4.1
	1957	4.0	14.6	21.5	3.7
	1958	3.5	14.5	21.0	3.8
	1959	3.5	14.6	21.0	3.5
	1960	2.5	14.0	21.5	4.0
	Total 1950		-1.0	14.0	21.5
1960	1961	5.0	14.0	20.0	4.1
	1962	3.5	13.8	20.0	3.8
	1963	3.5	14.3	20.5	3.8
	1964	5.0	13.7	20.5	3.5
	1965	4.5	13.6	20.0	3.5
	1966	3.0	13.9	20.5	4.1
	1967	1.5	13.4	20.5	4.1
	1968	1.2	13.3	20.5	3.7
	1969	4.0	13.5	21.0	4.2
	1970	2.0	13.4	20.0	4.2
	Total 1960		1.2	13.7	21.0
1970	1971	3.0	13.2	20.0	3.7
	1972	4.0	13.4	20.0	3.3
	1973	3.0	12.7	19.0	3.8
	1974	4.0	12.6	19.0	3.2
	1975	1.0	12.6	20.0	3.7
	1976	1.0	12.8	20.0	3.3
	1977	4.0	12.7	18.0	3.4
	1978	5.0	13.5	20.0	3.6
	1979	2.0	13.2	22.0	3.8
	1980	5.0	13.8	20.0	3.5
	Total 1970		1.0	13.0	22.0
1980	1981	5.0	13.1	20.0	3.3
	1982	5.0	13.7	20.0	3.8
	1983	2.0	14.2	21.0	5.0

Estacion	14096
NOMBRE	MASCOTA (SMN)
ESTADO	JALISCO

Década	Año	Temp Max (°C)			
		Mín.	Prom.	Máx.	Desv. Est.
1920	1923	16.0	24.8	30.0	2.9
	1926	17.5	28.4	36.0	2.4
	1927	17.0	29.3	36.2	3.0
	1928	18.0	29.2	38.5	2.7
	1929	17.5	28.6	36.5	3.2
	1930	17.5	33.5	42.0	4.4
Total 1920		16.0	29.5	42.0	4.0
1930	1931	19.0	31.6	43.0	4.0
	1932	19.0	30.6	41.0	3.5
	1933	19.5	29.7	38.5	3.6
	1934	21.0	29.0	36.5	2.8
	1935	17.0	26.2	35.0	3.4
	1936	21.0	28.9	37.0	2.9
	1937	23.0	30.1	35.0	2.2
	1938	23.0	29.5	35.0	2.3
	1939	21.0	27.7	35.0	2.3
	1940	26.0	26.6	27.0	0.5
	Total 1930		17.0	29.2	43.0
1940	1941	21.0	25.6	28.0	1.4
	1942	18.0	28.7	36.0	3.9
	1943	18.5	30.2	37.0	3.3
	1944	18.0	28.0	36.0	3.5
	1945	20.0	29.0	37.0	3.5
	1946	20.0	28.8	35.5	3.5
	1947	17.0	29.0	37.0	3.4
	1948	20.0	29.0	35.0	2.9
	1949	20.0	28.1	34.0	2.2
	1950	22.0	29.6	35.0	2.2
	Total 1940		17.0	28.8	37.0
1950	1951	20.0	29.3	34.0	2.6
	1952	22.0	29.2	35.0	2.5
	1953	21.0	28.2	35.0	2.6
	1954	22.0	28.3	35.0	3.0
	1955	19.0	28.5	37.0	3.9
	1956	22.0	29.9	36.5	2.9
	1957	18.0	31.8	38.0	3.0
	1958	15.0	29.6	36.0	3.6
	1959	18.5	29.2	35.0	2.8
	1960	18.0	29.7	37.0	3.5
	Total 1950		15.0	29.4	38.0
1960	1961	14.5	29.1	36.5	3.2
	1962	17.0	29.6	35.5	3.3
	1963	19.0	28.8	36.5	3.3
	1964	15.0	29.6	36.0	3.3
	1965	18.0	30.4	36.0	3.0
	1966	13.0	29.6	35.5	2.9
	1967	18.0	29.8	36.0	2.9
	1968	13.5	29.6	35.5	3.0
	1969	15.0	30.8	37.0	3.0
	1970	18.0	30.5	36.0	2.8
	Total 1960		13.0	29.8	37.0
1970	1971	16.0	30.1	37.0	2.8
	1972	19.0	29.7	36.0	2.7
	1973	20.0	29.5	35.0	2.7
	1974	15.0	29.5	36.0	2.8
	1975	17.0	29.6	35.0	2.7
	1976	19.0	29.7	35.0	2.9
	1977	19.0	30.0	36.0	2.5
	1978	18.0	29.4	36.0	2.7
	1979	18.0	29.7	35.0	2.7
	1980	18.0	29.5	37.0	3.0
	Total 1970		15.0	29.7	37.0
1980	1981	18.0	29.3	35.0	2.9
	1982	15.0	29.2	35.0	2.9
	1983	19.0	27.1	34.0	2.8

Estacion	14096
NOMBRE	MASCOTA (SMN)
ESTADO	JALISCO

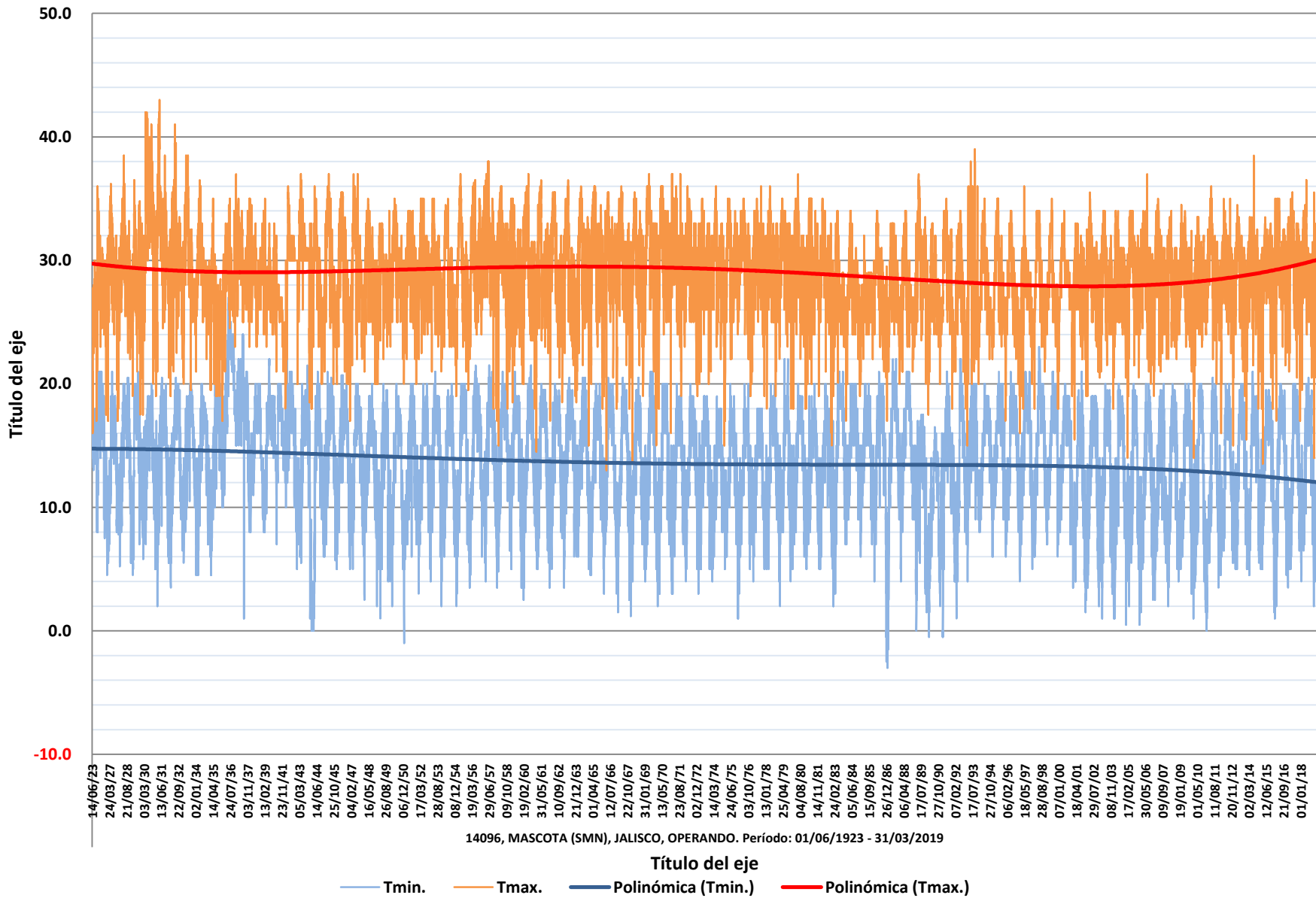
Década	Año	Temp Min (°C)				
		Mín.	Prom.	Máx.	Desv. Est.	
1980	1984	7.0	14.9	20.0	2.9	
	1985	6.0	14.8	20.0	3.1	
	1986	-2.5	14.5	21.0	4.3	
	1987	-3.0	14.2	22.0	5.6	
	1988	4.0	15.3	21.0	3.3	
	1989	0.0	11.5	17.5	4.1	
	1990	-0.5	9.4	16.5	4.1	
Total 1980		-3.0	13.6	22.0	4.4	
1990	1991	-0.5	13.6	21.0	3.7	
	1992	1.0	13.0	22.0	4.7	
	1993	4.0	14.6	22.0	3.5	
	1994	6.0	14.8	20.0	3.0	
	1995	6.0	15.0	21.0	3.4	
	1996	6.0	14.8	21.0	3.5	
	1997	4.0	14.4	21.0	3.9	
	1998	6.0	15.1	23.0	4.1	
	1999	6.0	15.0	21.0	3.7	
		2000	7.0	15.0	20.0	3.0
	Total 1990		-0.5	14.5	23.0	3.7
2000	2001	1.5	11.7	21.0	4.5	
	2002	2.0	12.2	19.0	4.8	
	2003	1.0	12.2	20.0	4.7	
	2004	0.5	12.2	20.0	4.7	
	2005	0.5	11.9	20.0	4.6	
	2006	1.5	12.1	20.0	4.5	
	2007	2.5	12.0	20.0	4.4	
	2008	2.0	12.2	20.0	4.9	
	2009	3.0	12.5	20.0	4.6	
		2010	1.0	11.6	20.0	5.2
Total 2000		0.5	12.0	21.0	4.7	
2010	2011	0.0	12.1	20.5	5.1	
	2012	4.5	12.7	20.0	4.3	
	2013	5.0	13.0	20.0	4.4	
	2014	4.5	13.0	21.0	4.5	
	2015	5.0	13.8	19.5	3.7	
	2016	1.0	12.7	20.0	4.8	
	2017	3.5	12.7	20.0	4.5	
	2018	2.0	13.0	20.5	4.2	
		2019	4.0	9.1	13.0	1.7
Total 2010		0.0	12.8	21.0	4.5	
Total general		-3.0	13.7	27.0	4.2	

Estacion	14096
NOMBRE	MASCOTA (SMN)
ESTADO	JALISCO

Década	Año	Temp Max (°C)				
		Mín.	Prom.	Máx.	Desv. Est.	
1980	1984	17.0	27.6	34.0	2.8	
	1985	19.0	26.2	32.0	1.8	
	1986	20.5	27.7	34.0	2.7	
	1987	17.0	27.4	33.0	2.8	
	1988	21.0	27.6	34.0	2.8	
	1989	20.0	29.2	37.0	3.1	
	1990	17.5	27.1	33.0	3.0	
Total 1980		15.0	27.8	37.0	2.9	
1990	1991	18.0	28.4	35.0	3.3	
	1992	18.0	27.2	34.0	3.4	
	1993	15.0	28.2	39.0	4.1	
	1994	22.0	28.1	35.0	3.4	
	1995	17.0	28.1	35.0	3.5	
	1996	19.0	27.6	34.0	3.1	
	1997	16.0	26.9	36.0	3.0	
	1998	18.0	28.0	34.0	3.1	
	1999	18.0	27.9	35.0	3.3	
		2000	19.0	28.8	34.0	2.3
	Total 1990		15.0	27.9	39.0	3.3
2000	2001	15.5	28.1	33.0	2.3	
	2002	19.0	28.5	35.5	2.7	
	2003	20.5	28.5	34.0	2.4	
	2004	18.0	27.9	34.0	2.7	
	2005	14.0	28.9	34.0	2.8	
	2006	20.0	28.9	37.0	2.4	
	2007	19.0	28.6	35.0	2.7	
	2008	22.0	28.6	34.0	2.2	
	2009	21.0	28.8	34.5	2.4	
		2010	14.0	28.1	33.5	2.9
Total 2000		14.0	28.5	37.0	2.6	
2010	2011	20.0	29.3	36.0	2.4	
	2012	16.0	28.7	35.0	2.6	
	2013	15.0	28.5	34.5	2.9	
	2014	18.0	28.5	38.5	2.5	
	2015	13.5	28.6	33.5	2.8	
	2016	17.0	29.5	35.0	2.6	
	2017	17.0	29.8	35.5	2.7	
	2018	14.0	29.0	36.5	2.8	
		2019	20.5	28.8	33.5	2.5
Total 2010		13.5	29.0	38.5	2.7	
Total general		13.0	28.9	43.0	3.2	



Registro Diario de Temperaturas Mínima y Máxima



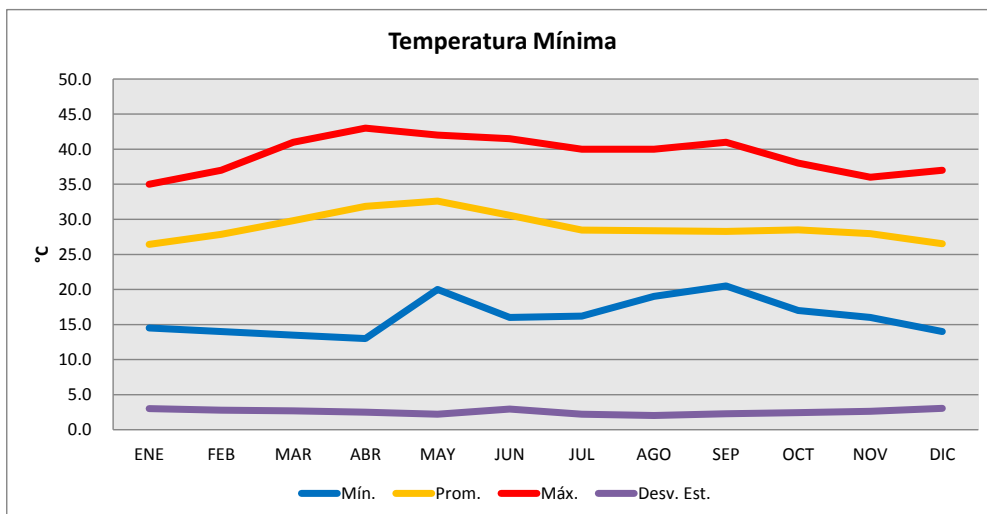
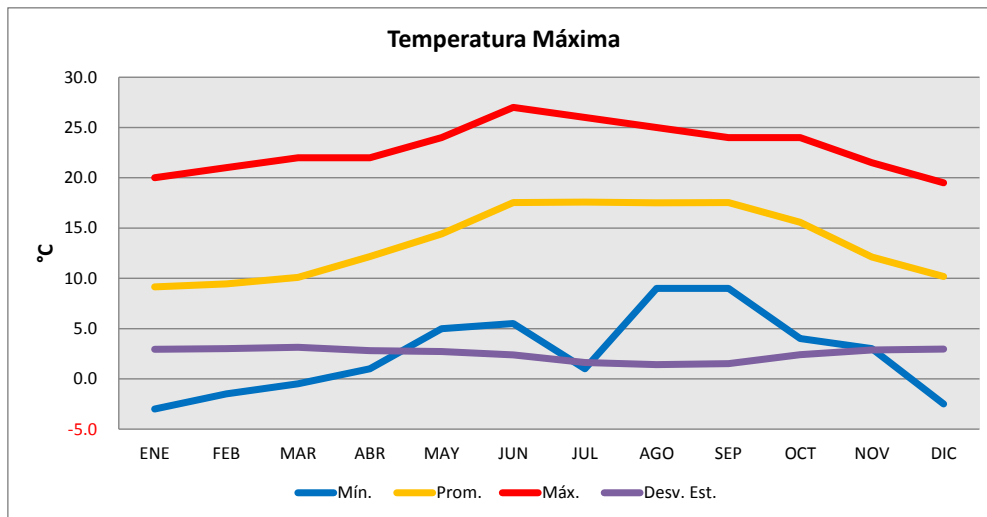


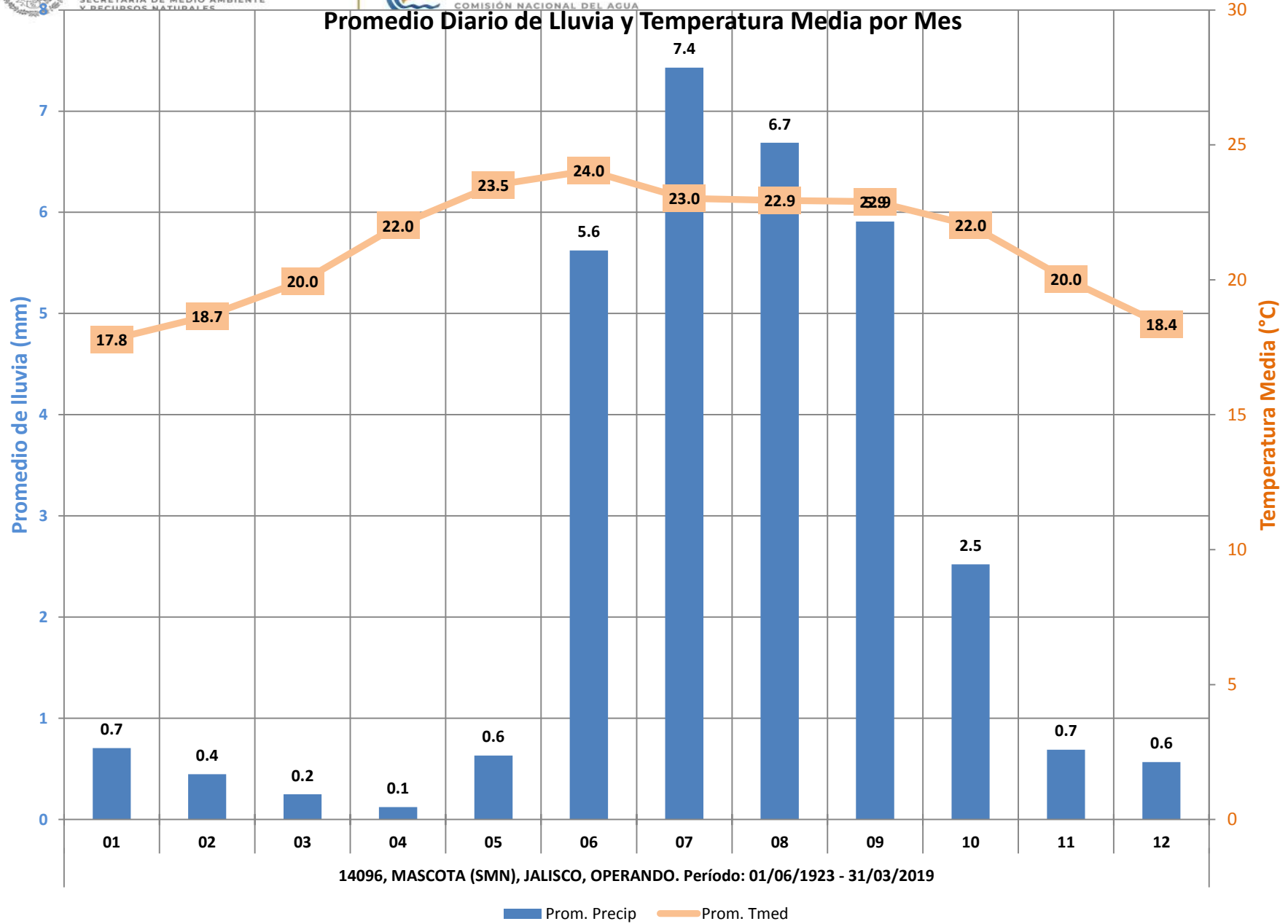
Estacion	14096
NOMBRE	MASCOTA (SMN)
ESTADO	JALISCO

Estacion	14096
NOMBRE	MASCOTA (SMN)
ESTADO	JALISCO

Mes	Temp Min (°C)			
	Mín.	Prom.	Máx.	Desv. Est.
ENE	-3.0	9.1	20.0	2.9
FEB	-1.5	9.4	21.0	3.0
MAR	-0.5	10.1	22.0	3.1
ABR	1.0	12.2	22.0	2.8
MAY	5.0	14.4	24.0	2.7
JUN	5.5	17.5	27.0	2.4
JUL	1.0	17.6	26.0	1.6
AGO	9.0	17.5	25.0	1.4
SEP	9.0	17.5	24.0	1.5
OCT	4.0	15.6	24.0	2.4
NOV	3.0	12.1	21.5	2.9
DIC	-2.5	10.2	19.5	3.0
Total general	-3.0	13.7	27.0	4.2

Mes	Temp Max (°C)			
	Mín.	Prom.	Máx.	Desv. Est.
ENE	14.5	26.4	35.0	3.0
FEB	14.0	27.9	37.0	2.8
MAR	13.5	29.8	41.0	2.7
ABR	13.0	31.9	43.0	2.5
MAY	20.0	32.6	42.0	2.2
JUN	16.0	30.6	41.5	3.0
JUL	16.2	28.5	40.0	2.2
AGO	19.0	28.4	40.0	2.0
SEP	20.5	28.3	41.0	2.3
OCT	17.0	28.5	38.0	2.4
NOV	16.0	27.9	36.0	2.6
DIC	14.0	26.5	37.0	3.0
Total general	13.0	28.9	43.0	3.2





Estación	14096
NOMBRE	MASCOTA (SMN)
ESTADO	JALISCO

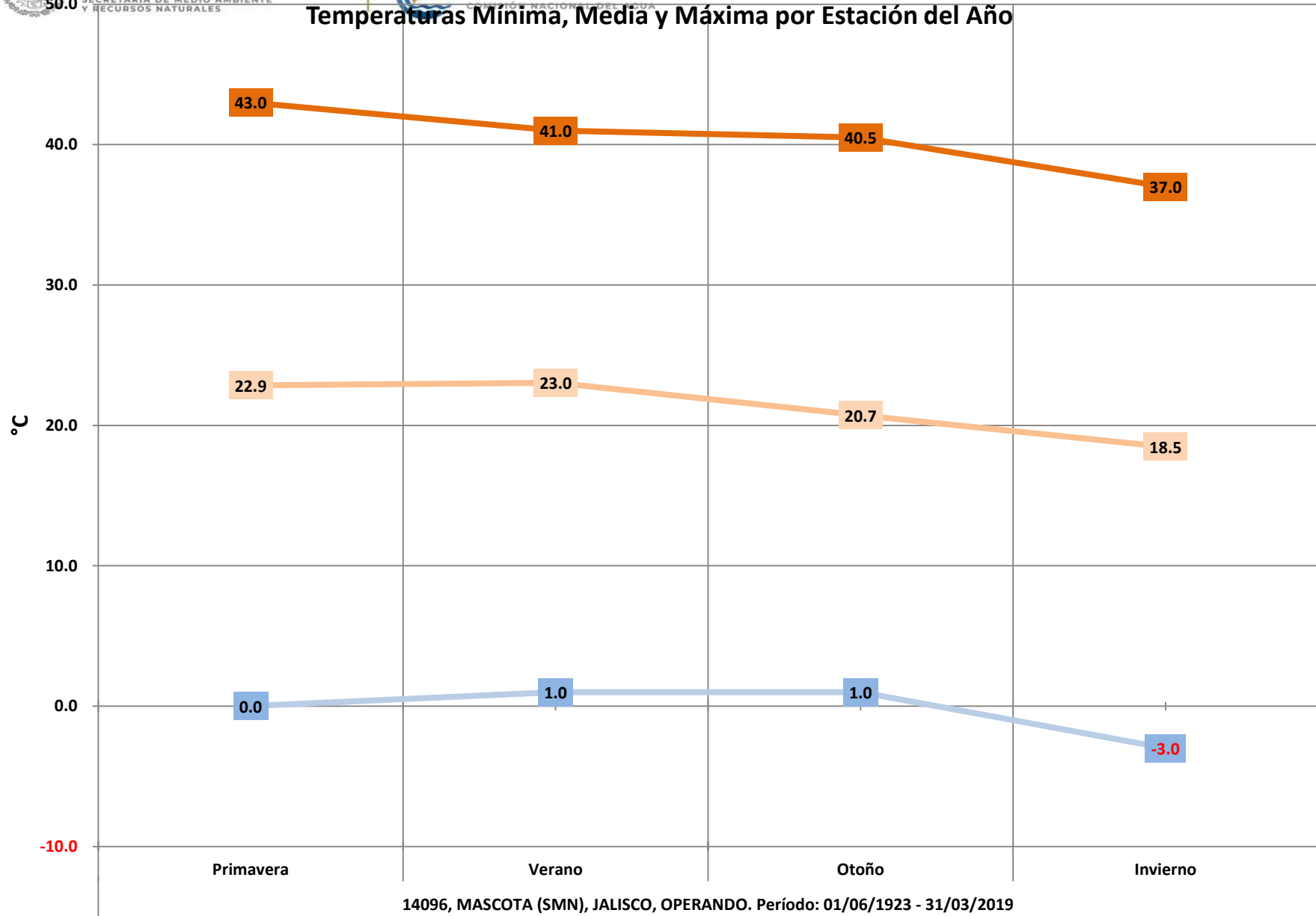
Década	Año	Estación Promedios												
		Primavera			Verano			Otoño			Invierno			
		Lluvia (mm)	T min (°C)	T max (°C)	Lluvia (mm)	T min (°C)	T max (°C)	Lluvia (mm)	T min (°C)	T max (°C)	Lluvia (mm)	T min (°C)	T max (°C)	
1920	1923	0.6	16.3	20.4	5.9	15.4	25.0	3.4	14.0	25.1	2.9	11.5	24.7	
	1926	1.1	15.3	31.1	5.4	17.9	27.6	2.0	13.5	28.0	0.0	9.4	27.6	
	1927	1.4	14.4	32.5	7.0	17.3	28.7	1.0	14.1	28.5	0.0	10.5	28.0	
	1928	1.2	14.5	31.7	6.8	17.7	28.9	1.3	14.6	27.9	0.1	9.4	26.9	
	1929	0.8	16.5	32.4	4.9	17.9	27.8	0.9	14.1	29.9	0.2	11.1	29.4	
	1930	0.8	13.6	36.1	3.4	16.4	35.8	3.2	14.5	32.5	0.1	11.1	29.4	
	Total 1920	1.1	14.5	32.8	5.5	17.1	29.0	1.8	14.1	29.0	0.2	10.2	28.0	
	1930	1931	1.3	14.2	36.0	6.3	17.7	29.9	0.5	14.2	30.4	1.4	9.0	30.0
		1932	0.1	14.2	34.1	5.9	18.0	30.5	0.7	13.7	29.8	0.5	10.4	27.7
		1933	1.1	14.2	34.2	6.2	18.0	29.4	1.6	14.6	26.9	0.1	11.0	28.3
1934		0.8	14.1	32.5	5.2	17.1	28.0	2.2	14.0	27.2	0.2	9.8	28.4	
1935		1.5	14.5	29.2	7.0	18.2	23.9	1.0	15.7	25.4	0.8	9.6	26.3	
1936		0.7	20.8	30.3	4.8	23.2	28.0	2.4	20.1	29.5	0.0	16.0	27.6	
1937		0.2	19.5	31.2	5.7	18.5	28.4	1.7	15.2	29.5	0.0	16.9	31.5	
1938		1.2	15.6	30.2	5.5	17.5	27.0	1.8	14.6	29.8	0.4	12.6	31.0	
1939		0.5	16.7	28.1	5.3	17.8	26.9	1.3	15.6	27.2	0.1	10.8	28.6	
1940											0.5	12.5	26.6	
Total 1930	0.8	16.0	31.7	5.8	18.4	28.0	1.5	15.3	28.4	0.4	11.8	28.7		
1940	1941				5.4	18.6	26.4	1.8	17.6	25.5	0.0	14.1	22.5	
	1942	1.0	17.1	30.9	5.8	18.4	30.3	0.7	13.7	30.1	0.1	14.9	23.4	
	1943	1.0	13.1	33.1	4.8	17.2	30.4	1.6	15.9	27.9	0.0	9.7	29.4	
	1944	0.0	10.3	31.9	4.5	17.9	28.3	0.8	13.6	26.1	0.1	3.0	25.7	
	1945	0.2	13.2	33.1	6.3	17.9	29.6	2.3	13.4	26.5	0.0	10.5	26.9	
	1946	0.1	14.4	32.9	6.7	17.2	29.4	2.9	13.9	26.2	1.1	10.3	26.5	
	1947	1.1	14.3	32.7	5.8	17.5	29.5	0.7	13.6	27.5	1.5	9.5	26.1	
	1948	1.5	14.8	32.4	7.9	17.1	29.1	1.4	13.4	27.1	0.7	9.9	27.2	
	1949	1.4	10.5	30.2	6.8	16.9	27.7	2.4	11.6	27.5	0.2	8.1	27.1	
	1950	1.9	14.3	32.2	6.7	16.9	28.4	1.0	11.8	28.5	0.0	9.1	29.1	
Total 1940	0.9	13.6	32.1	6.1	17.5	29.1	1.6	13.9	27.3	0.4	9.5	26.8		
1950	1951	0.7	13.3	32.0	6.8	17.6	29.1	2.5	13.5	28.1	0.2	9.0	27.9	
	1952	1.8	14.1	31.7	8.8	17.2	28.0	1.3	13.2	28.3	0.0	9.6	28.2	
	1953	1.7	14.0	31.0	6.0	17.7	27.7	1.8	12.9	26.9	0.6	9.1	27.1	
	1954	1.4	14.3	32.2	7.6	17.3	27.4	1.1	12.9	26.2	0.0	10.4	27.3	
	1955	0.6	13.9	33.5	9.6	18.3	27.7	1.2	13.3	26.4	0.2	8.7	26.4	
	1956	2.0	15.8	32.3	5.5	18.0	28.4	1.4	13.9	30.8	0.0	9.2	28.2	
	1957	0.2	13.3	35.0	4.8	19.0	30.8	2.5	14.8	29.6	0.0	11.1	31.8	
	1958	1.3	14.7	32.8	7.4	18.2	30.2	3.6	15.2	28.5	1.0	9.7	26.9	
	1959	3.3	15.2	30.8	6.4	17.8	28.0	1.3	13.3	28.5	0.0	10.5	29.7	
	1960	0.2	13.8	34.0	8.9	18.3	28.3	1.9	14.5	27.9	0.1	9.4	28.5	
Total 1950	1.3	14.2	32.6	7.2	17.9	28.6	1.9	13.8	28.1	0.2	9.6	28.2		
1960	1961	2.2	14.6	32.2	7.2	18.1	27.7	0.7	13.4	28.8	1.1	9.7	27.7	
	1962	1.2	14.0	33.5	8.5	17.8	28.3	2.7	13.9	27.4	0.3	9.5	29.0	
	1963	1.6	15.5	33.0	10.7	18.0	27.5	2.4	13.9	26.8	0.2	9.6	27.9	
	1964	1.3	14.2	32.9	7.2	17.7	28.9	1.8	13.2	29.4	0.2	9.8	27.2	
	1965	0.4	14.0	33.6	7.9	17.4	29.2	2.0	13.5	29.8	0.5	9.2	28.8	
	1966	1.9	14.8	31.9	9.0	18.1	29.0	3.1	12.8	29.3	0.7	9.6	28.4	
	1967	2.3	14.0	32.6	7.2	17.5	28.9	2.6	12.9	28.6	0.6	8.9	29.3	
	1968	0.8	13.3	32.2	7.8	17.5	28.9	2.0	13.3	30.0	2.8	9.2	27.3	
	1969	0.0	12.9	34.2	6.9	18.8	30.3	1.9	13.1	29.6	0.2	9.2	29.1	
	1970	1.1	13.4	33.6	7.2	18.2	29.5	1.4	12.7	30.3	0.6	9.0	28.8	
Total 1960	1.3	14.1	33.0	7.9	17.9	28.8	2.1	13.3	29.0	0.7	9.4	28.3		
1970	1971	1.1	13.0	32.7	8.3	17.1	28.3	1.7	13.7	29.5	0.3	9.0	29.9	
	1972	1.3	13.3	31.7	7.7	16.6	29.0	1.9	14.1	29.2	0.3	9.6	28.8	
	1973	0.4	12.7	31.9	7.0	17.0	28.4	2.4	11.9	29.6	0.9	9.2	27.9	
	1974	2.5	12.7	31.9	6.0	16.1	28.5	1.5	12.3	28.7	1.0	9.2	28.8	
	1975	0.5	13.3	32.2	6.8	16.6	28.0	0.6	11.9	30.3	0.2	8.5	28.0	
	1976	1.2	12.8	32.7	8.4	16.3	28.8	2.3	12.8	27.9	0.7	9.3	29.3	
	1977	1.6	13.2	32.3	6.2	16.3	29.4	1.9	12.2	29.3	0.1	9.1	29.0	
	1978	2.2	13.4	32.4	6.3	17.3	28.5	1.5	13.7	29.0	0.3	9.3	27.8	
	1979	0.3	12.8	32.3	7.3	17.8	29.0	0.4	12.0	29.2	0.5	10.0	28.2	
	1980	0.6	14.1	32.7	7.0	17.5	28.7	2.5	13.3	28.2	1.7	10.2	28.2	
Total 1970	1.2	13.1	32.3	7.1	16.9	28.7	1.7	12.8	29.1	0.6	9.3	28.6		
1980	1981	0.9	13.1	31.8	6.6	16.7	28.6	1.7	12.6	29.3	2.0	10.0	27.4	
	1982	0.1	14.9	32.0	6.7	17.5	28.7	2.7	12.9	27.6	0.2	9.5	28.6	
	1983	1.0	14.2	30.4	6.4	19.2	26.5	2.7	15.2	25.8	0.2	8.0	25.5	
	1984	1.6	15.7	30.7	6.7	17.6	27.0	1.7	14.6	26.6	0.9	11.6	25.9	
	1985	2.2	15.5	26.9	8.8	17.8	26.1	1.5	14.1	26.9	0.4	11.5	25.1	
	1986	1.3	16.0	30.7	6.0	18.4	27.3	2.9	14.0	25.6	0.2	9.5	27.2	
	1987	0.6	15.4	30.1	5.9	19.5	28.4	1.9	14.7	26.3	1.7	6.9	24.7	
	1988	2.3	15.7	31.1	9.3	19.2	27.2	0.5	14.9	26.0	0.0	11.5	26.0	
	1989	0.1	11.5	32.0	7.9	15.1	28.6	1.4	10.0	29.3	0.0	9.3	26.9	
	1990	1.8	9.6	30.2	6.2	14.0	28.3	1.9	9.2	25.9	0.4	4.8	24.0	
Total 1980	1.2	14.2	30.6	7.1	17.5	27.7	1.9	13.2	26.9	0.6	9.2	26.1		
1990	1991	0.8	14.3	32.1	7.8	16.8	28.4	1.0	13.1	27.1	0.0	9.9	26.0	
	1992	0.8	12.4	30.2	4.0	18.7	29.1	3.2	14.3	24.6	3.5	8.3	25.3	
	1993	0.6	14.7	32.5	9.7	18.0	28.1	1.2	14.2	26.3	0.1	10.3	24.8	
	1994	1.5	15.6	32.7	6.5	17.7	28.3	2.0	14.9	25.0	0.0	10.8	26.4	
	1995	2.0	15.4	32.6	8.2	18.6	28.1	0.8	14.3	26.3	0.4	11.6	25.5	
	1996	1.4	15.8	31.6	8.1	18.2	27.6	2.6	14.4	25.2	0.0	10.7	26.2	
	1997	2.5	15.6	28.9	7.7	18.1	28.0	1.4	13.8	25.9	0.8	10.3	24.9	
	1998	1.0	15.9	31.9	8.0	19.0	28.3	2.5	15.7	26.1	0.1	9.7	25.4	
	1999	0.9	15.8	32.0	7.8	18.4	26.8	0.5	14.5	25.2	0.0	10.9	26.5	
	2000	3.3	15.9	31.4	6.9	17.7	29.1	0.8	14.8	27.3	0.3	11.4	27.2	
Total 1990	1.5	15.1	31.6	7.6	18.1	28.2	1.6	14.4	25.9	0.5	10.4	25.8		
2000	2001	2.3	11.7	30.0	7.0	16.8	28.0	0.6	11.0	27.8	0.7	7.3	26.5	

Estación	14096
NOMBRE	MASCOTA (SMN)
ESTADO	JALISCO

Década	Año	Estación Promedios											
		Primavera			Verano			Otoño			Invierno		
		Lluvia (mm)	T min (°C)	T max (°C)	Lluvia (mm)	T min (°C)	T max (°C)	Lluvia (mm)	T min (°C)	T max (°C)	Lluvia (mm)	T min (°C)	T max (°C)
Total 2000		1.2	11.7	30.8	7.6	17.3	28.2	1.4	11.7	27.6	0.6	7.3	27.2
2010	2011	0.3	11.6	32.1	8.9	18.1	28.5	1.9	11.9	27.9	0.0	6.5	28.6
	2012	1.9	11.9	31.2	8.8	17.6	28.1	0.9	13.1	28.4	1.3	8.4	27.0
	2013	1.5	11.6	31.6	7.1	17.9	28.0	3.6	13.9	27.8	3.3	8.7	26.7
	2014	2.3	13.8	30.7	9.9	17.2	28.3	2.6	13.2	27.5	0.0	7.6	27.3
	2015	0.6	14.0	30.2	6.1	17.2	29.5	4.2	14.8	28.5	3.3	9.2	26.1
	2016	1.0	12.8	31.8	6.6	17.7	29.1	1.3	13.3	29.0	0.1	7.0	28.1
	2017	0.1	11.6	32.5	9.5	17.8	29.1	1.7	13.2	28.7	0.1	8.1	28.8
	2018	0.7	13.3	31.6	9.0	17.0	28.6	3.1	13.0	27.4	0.4	8.6	28.1
	2019	0.0	8.7	31.2							0.3	9.2	28.5
Total 2010		1.0	12.5	31.5	8.2	17.6	28.7	2.4	13.3	28.2	1.0	8.1	27.7
Total general		1.2	13.9	31.8	7.1	17.6	28.4	1.8	13.5	27.9	0.5	9.4	27.5



Temperaturas Mínima, Media y Máxima por Estación del Año



— Mín. de Tmin — Promedio de Tmed — Máx. de Tmax


Lluvia Promedio y Máxima, por Estación del Año
